

Hoshizaki America, Inc.

Stackable Crescent Cuber

Models

KM-I900SAH/3

KM-I900SWH/3

KM-I900SRH/3



“A Superior Degree
of Reliability”

www.hoshizaki.com

PARTS LIST



Number: 71291
Issued: 12-22-2008
Revised: 1-29-2009

CONTENTS

Auxiliary Codes.....	3
Note About Ordering Parts	3
Material Abbreviations	4
A. Ice Cuber Assembly	5
KM-1900SAH/3	5
KM-1900SWH/3	8
KM-1900SRH/3	10
B. Refrigeration Circuit	13
KM-1900SAH/3	13
KM-1900SWH/3	17
KM-1900SRH/3	21
C. Water Circuit	25
D. Control Box Assembly.....	28
E. Capacitor Box Assembly	30
KM-1900SAH, KM-1900SWH, KM-1900SRH	30
F. Transformer Box Assembly	31
KM-1900SAH3, KM-1900SWH3, KM-1900SRH3	31
G. Label Location	32
KM-1900SAH/3	32
KM-1900SWH/3	34
KM-1900SRH/3	36
H. Evaporator Assembly.....	38
J. Pump Motor Assembly.....	39
K. Accessories & Packaging.....	40

Auxiliary Codes

KM-1900SAH	T-0	October 2008
	U-0	January 2009
KM-1900SAH3	T-0	October 2008
	U-0	January 2009
KM-1900SWH	T-0	October 2008
KM-1900SWH3	T-0	October 2008
	U-0	February 2009
KM-1900SRH	T-0	October 2008
	U-0	January 2009
KM-1900SRH3	T-0	October 2008
	U-0	January 2009

Auxiliary Code Breakdown

The auxiliary code is the first two characters in the serial number. The first character indicates the year. Years progress or regress in alphabetical order. The series runs from "A" through "V" and the letters "I" and "O" are skipped. The second character indicates significant part changes within a year. Base is "0" and this number advances for each change.

Note About Ordering Parts

Most assemblies cannot be ordered as complete units; parts in the assemblies generally must be ordered separately.

Material Abbreviations

ALUMINUM

AL = Aluminum

COPPER

CU = Copper

PLASTIC

ABS = Acrylonitrile -butadiene - styrene
AC = Polyacetal
EVA = Ethylene vinyl acetate
PA = Polyamide = Nylon
PC = Polycarbonate
PE = Polyethylene
PES = Polyester
PETP = Polyethylene terephthalate = Tetlon
PP = Polypropylene
PS = Polystyrene
PTFE = Polytetrafluoroethylene = Teflon
PUR = Polyurethane
PVC = Polyvinyl chloride

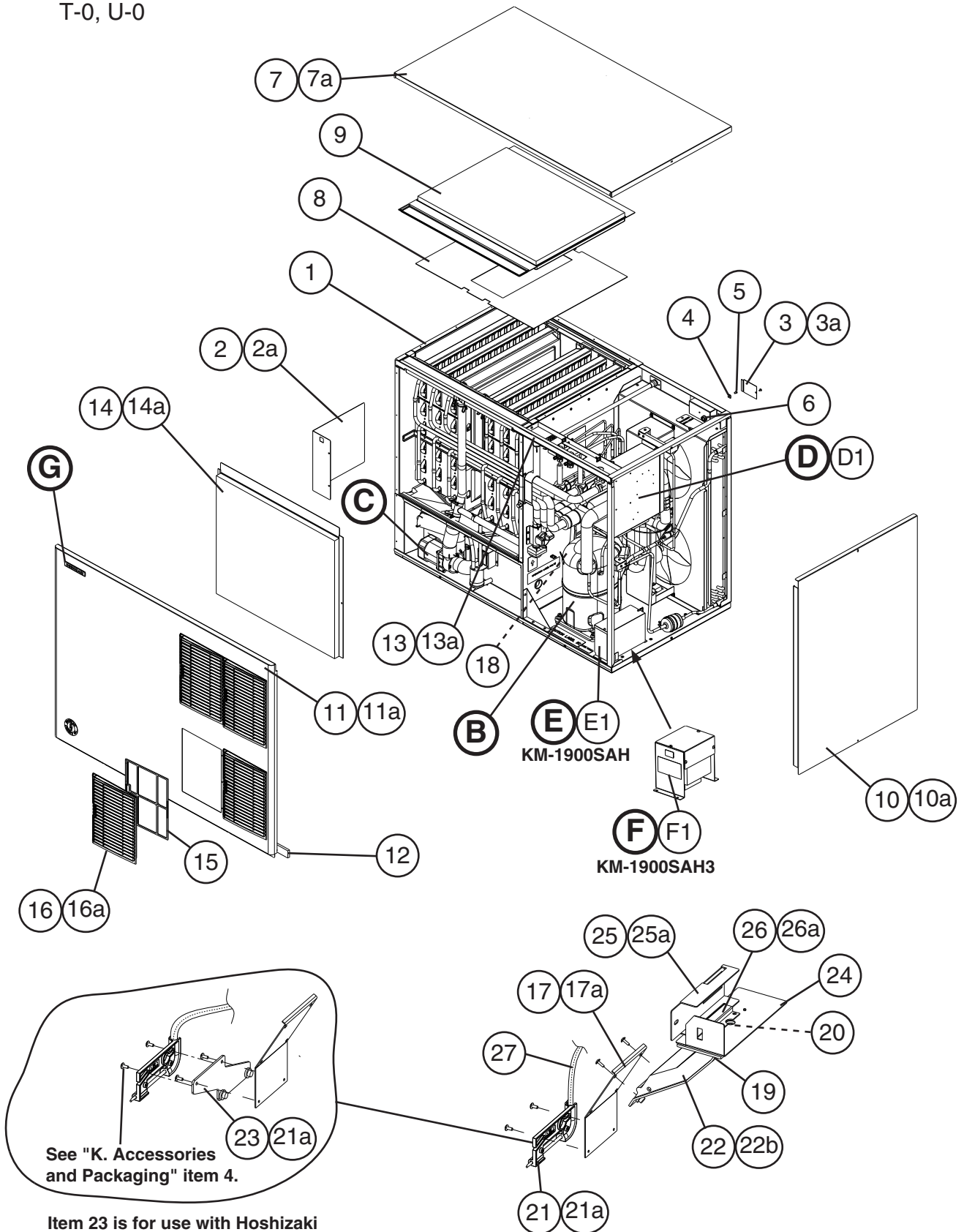
RUBBER

VN = Vinyl Nitrile
EPDM = EP rubber
NBR = Nitrile butadiene rubber
NR = Natural rubber
NP = Neoprene
SI.R = Silicone rubber
SY.R = Synthetic rubber
EPH = Epichlorohydrin

STEEL

GS = Galvanized steel
SS = Stainless steel
PS = Plated steel
PAS = Primed steel

A. Ice Cuber Assembly
KM-1900SAH/3
 T-0, U-0



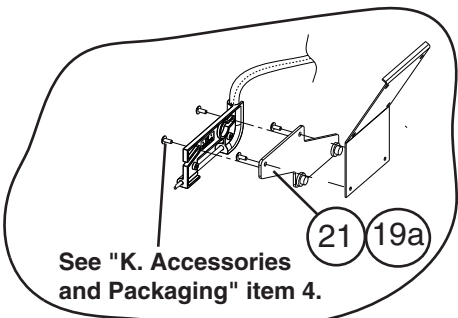
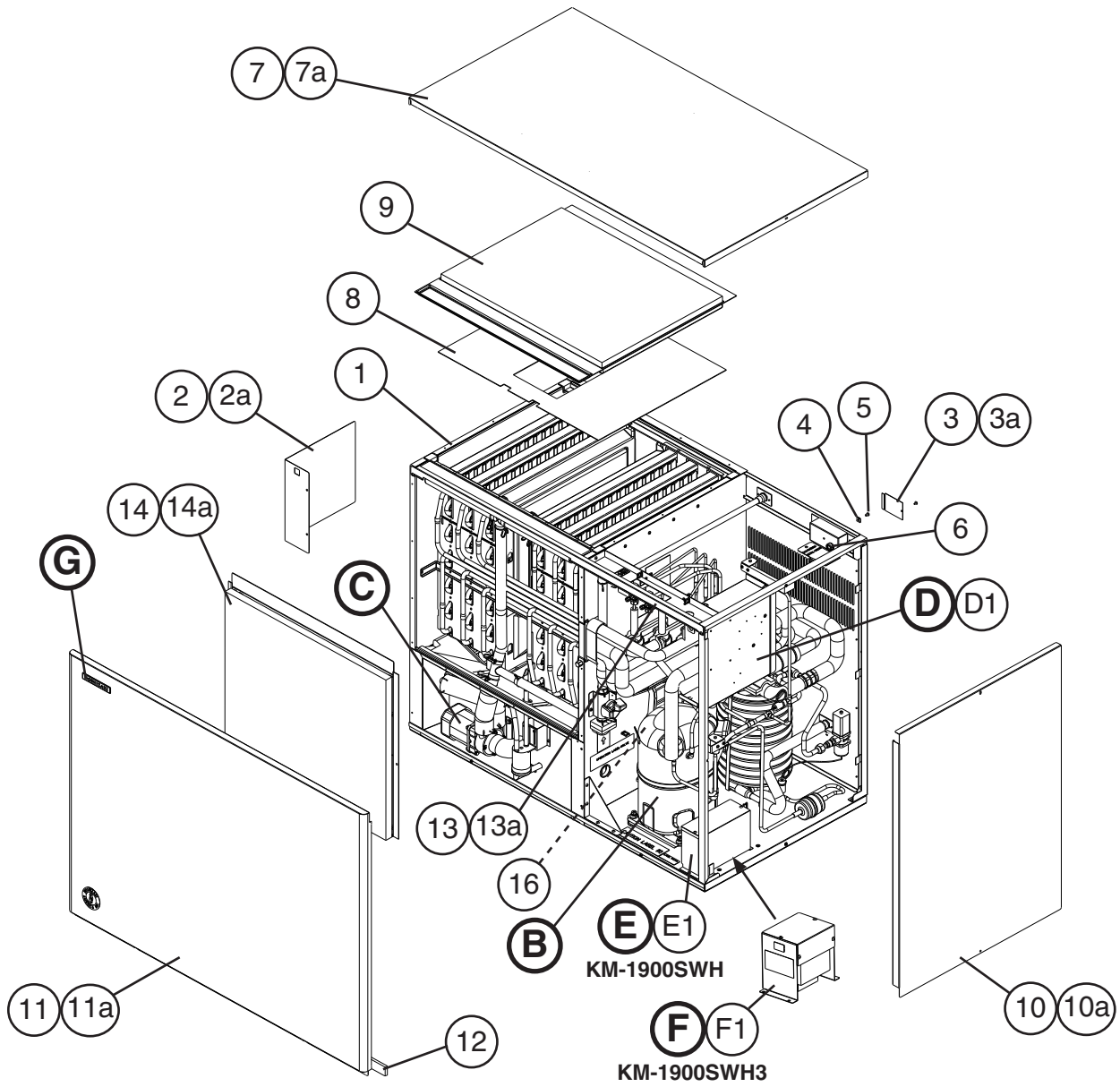
See "K. Accessories and Packaging" item 4.

Item 23 is for use with Hoshizaki bins B-1300, B-1500, B-1650, and non-Hoshizaki bins.

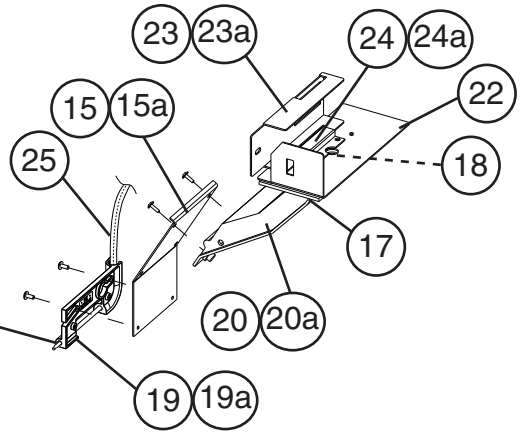
Title: A. Ice Cuber Assembly Model: KM-1900SAH/3												
Index No.	Description	Material or Model Number	Part Number	Required Number								
				T-0	U-0							
B	Refrigeration Circuit	KM-1900SAH	1A1596A01	1								
		KM-1900SAH3	1A1596A02	1								
C	Water Circuit	-	1A1542A01	1								
D	Control Box Assembly	-	2A2527A01	1								
D1	T2 Screw	4x8	7P31-0408	3								
E	Capacitor Box Assembly	KM-1900SAH	3A4975A01	1								
E1	T2 Screw	4x8	7P31-0408	2								
F	Transformer Box Assembly	KM-1900SAH3 HS-0126	3A1102A01	1								
F1	Hex Head Bolt w/Washer (LF)	5x10	7B0130510	4								
G	Label Location	KM-1900SAH	2A4741A01	1								
		KM-1900SAH3	2A4741A02	1								
1	Evaporator Case	-	2A2100G02	1								
2	Control Box Cover	-	3A2386-01	1								
2a	T2 Screw	4x8	7P31-0408	2								
3	Junction Box Cover	-	433410-01	1								
3a	T2 Screw	4x8	7P31-0408	1								
4	Square Washer	-	433537-02	1								
5	Screw Grounding	-	433304-02	1								
6	Bushing	SR-34-2	420472-05	1								
7	Top Panel	SS	2A2255-01	1								
7a	Truss Head Screw	4x8, SS	7C32-0408	2								
8	Spacer	-	324321-01	1								
9	Top Insulation	-	324216G01	1								
10	Side Panel (R)	-	215381G02	1								
10a	Truss Head Screw	4x8, SS	7C32-0408	1								
11	Front Panel	-	3A1800G01	1								
11a	Truss Head Screw	4x16, SS	7C32-0416	2								
12	Gasket	L=1219	4A0808L02	1								
13	Front Panel Bracket	SS	323903-01	1								
13a	T2 Screw	4x12, SS	7P32-0412	2								
14	Front Insulation	-	326041G01	1								
14a	Thumbscrew	-	415949G12	1								
15	Air Filter B	-	2A2063G01	4								
16	Louver B	-	1A0548-01	4								
16a	Push Retainer	-	4A2414-01	12								
17	Thermostat Extension Bracket	-	3A0408-01	1								
17a	T2 Screw	4x12, SS	7P32-0412	2								
18	Clamp	-	4A0337-12	1								
19	Spacer	-	439727-01	1								
20	Capillary Ring	-	425307-01	1								
21	Bulb Holder	-	3A3903-01	1								
21a	Truss Head Screw	4x10, SS	7C32-0410	2								
22	Bulb Holder (C)	ABS	216340G01	1								
22a	Truss Head Screw	4x12, SS	7C32-0412	2								
23	Bulb Holder (C)	Z Bracket	325845G01	1								
24	Bulb Holder (E)	-	439725-01	1								

Title: A. Ice Cuber Assembly Model: KM-1900SAH/3												
Index No.	Description	Material or Model Number	Part Number	Required Number								
				T-0	U-0							
25	Bulb Holder (F)	-	328743-01	1								
25a	Thumbscrew	-	415949G12	2								
26	Bulb Holder (G)	-	439726-01	1								
26a	Truss Head Screw	4x6, SS	7C32-0406	2								
27	Silicone Hose	L=285	7730I3812	1								

A. Ice Cuber Assembly
KM-1900SWH/3
 T-0, U-0



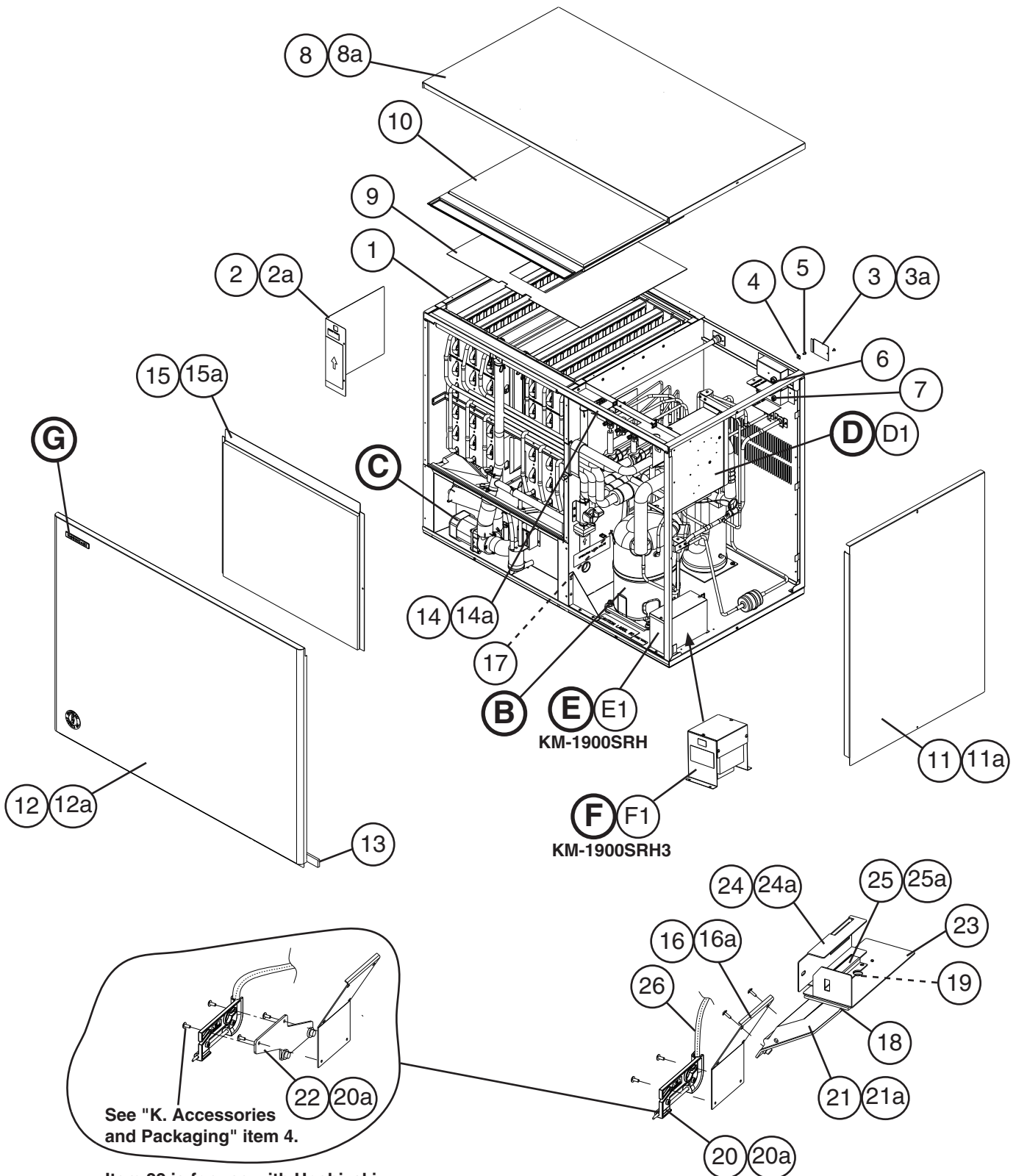
Item 21 is for use with Hoshizaki bins B-1300, B-1500, B-1650, and non-Hoshizaki bins.



Title: **A. Ice Cuber Assembly** Model: **KM-1900SWH/3**

Index No.	Description	Material or Model Number	Part Number	Required Number																
				T-0	U-0															
B	Refrigeration Circuit	KM-1900SWH	1A1598A01	1																
		KM-1900SWH3	1A1598A02	1																
C	Water Circuit	-	1A1542A01	1																
D	Control Box Assembly	-	2A2527A01	1																
D1	T2 Screw	4x8	7P31-0408	3																
E	Capacitor Box Assembly	KM-1900SWH	3A4975A01	1																
E1	T2 Screw	4x8	7P31-0408	2																
F	Transformer Box Assembly	KM-1900SWH3 HS-0126	3A1102A01	1																
F1	Hex Head Bolt w/Washer (LF)	5x10	7B0130510	4																
G	Label Location	KM-1900SWH	2A4742A01	1																
		KM-1900SWH3	2A4742A02	1																
1	Evaporator Case	-	2A2100G04	1																
2	Control Box Cover	-	3A2386-01	1																
2a	T2 Screw	4x8	7P31-0408	2																
3	Junction Box Cover	-	433410-01	1																
3a	T2 Screw	4x8	7P31-0408	1																
4	Square Washer	-	433537-02	1																
5	Screw Grounding	-	433304-02	1																
6	Bushing	SR-34-2	420472-05	1																
7	Top Panel	-	2A2255-01	1																
7a	Truss Head Screw	4x8, SS	7C32-0408	2																
8	Spacer	-	324321-01	1																
9	Top Insulation	-	324216G01	1																
10	Side Panel (R)	-	215381G02	1																
10a	Truss Head Screw	4x8, SS	7C32-0408	1																
11	Front Panel	-	3A1838G01	1																
11a	Truss Head Screw	4x16, SS	7C32-0416	2																
12	Gasket	L=1219	4A0808L02	1																
13	Front Panel Bracket	SS	323903-01	1																
13a	T2 Screw	4x12, SS	7P32-0412	2																
14	Front Insulation	-	326041G01	1																
14a	Thumbscrew	-	415949G12	1																
15	Thermostat Extension Bracket	-	3A0408-01	1																
15a	T2 Screw	4x12, SS	7P32-0412	2																
16	Clamp	-	4A0337-12	1																
17	Spacer	-	439727-01	1																
18	Capillary Ring	-	425307-01	1																
19	Bulb Holder	-	3A3903-01	1																
19a	Truss Head Screw	4x10, SS	7C32-0410	2																
20	Bulb Holder (C)	-	216340G01	1																
20a	Truss Head Screw	4x12, SS	7C32-0412	2																
21	Bulb Holder (C)	Z Bracket	325845G01	1																
22	Bulb Holder (E)	-	439725-01	1																
23	Bulb Holder (F)	-	328743-01	1																
23a	Thumbscrew	-	415949G12	2																
24	Bulb Holder (G)	-	439726-01	1																
24a	Truss Head Screw	4x6, SS	7C32-0406	2																
25	Silicone Hose	L=285	773013812	1																

A. Ice Cuber Assembly
KM-1900SRH/3
 T-0, U-0



See "K. Accessories and Packaging" item 4.

Item 22 is for use with Hoshizaki bins B-1300, B-1500, B-1650, and non-Hoshizaki bins.

Title: A. Ice Cuber Assembly Model: KM-1900SRH/3												
Index No.	Description	Material or Model Number	Part Number	Required Number								
				T-0	U-0							
B	Refrigeration Circuit	KM-1900SRH	1A1600A01	1								
		KM-1900SRH3	1A1600A02	1								
C	Water Circuit	-	1A1542A01	1								
D	Control Box Assembly	-	2A2527A01	1								
D1	T2 Screw	4x8	7P31-0408	3								
E	Capacitor Box Assembly	KM-1900SRH	3A4975A01	1								
E1	T2 Screw	4x8	7P31-0408	2								
F	Transformer Box Assembly	KM-1900SRH3 HS-0126	3A1102A01	1								
F1	Hex Head Bolt w/Washer (LF)	5x10	7B0130510	4								
G	Label Location	KM-1900SRH	2A4743A01	1								
		KM-1900SRH3	2A4743A02	1								
1	Evaporator Case	-	2A2100G05	1								
2	Control Box Cover	-	3A2386-01	1								
2a	T2 Screw	4x8	7P31-0408	2								
3	Junction Box Cover	-	433410-01	2								
3a	T2 Screw	4x8	7P31-0408	2								
4	Square Washer	-	433537-02	2								
5	Screw Grounding	-	433304-02	2								
6	Bushing	SR-34-2	420472-05	1								
7	Bushing	SR-30-1	420472-03	1								
8	Top Panel	-	2A2255-01	1								
8a	Truss Head Screw	4x8, SS	7C32-0408	2								
9	Spacer	-	324321-01	1								
10	Top Insulation	-	324216G01	1								
11	Side Panel (R)	-	215381G02	1								
11a	Truss Head Screw	4x8, SS	7C32-0408	1								
12	Front Panel	-	3A1838G01	1								
12a	Truss Head Screw	4x16, SS	7C32-0416	2								
13	Gasket	L=1219	4A0808L02	1								
14	Front Panel Bracket	SS	323903-01	1								
14a	T2 Screw	4x12, SS	7P32-0412	2								
15	Front Insulation	-	326041G01	1								
15a	Thumbscrew	-	415949G12	1								
16	Thermostat Extension Bracket	-	3A0408-01	1								
16a	T2 Screw	4x12, SS	7P32-0412	2								
17	Clamp	-	4A0337-12	1								
18	Spacer	-	439727-01	1								
19	Capillary Ring	-	425307-01	1								
20	Bulb Holder	-	3A3903-01	1								
20a	Truss Head Screw	4x10, SS	7C32-0410	2								
21	Bulb Holder (C)	-	216340G01	1								
21a	Truss Head Screw	4x12, SS	7C32-0412	2								
22	Bulb Holder (C)	Z Bracket	325845G01	1								
23	Bulb Holder (E)	-	439725-01	1								
24	Bulb Holder (F)	-	328743-01	1								
24a	Thumbscrew	-	415949G12	2								

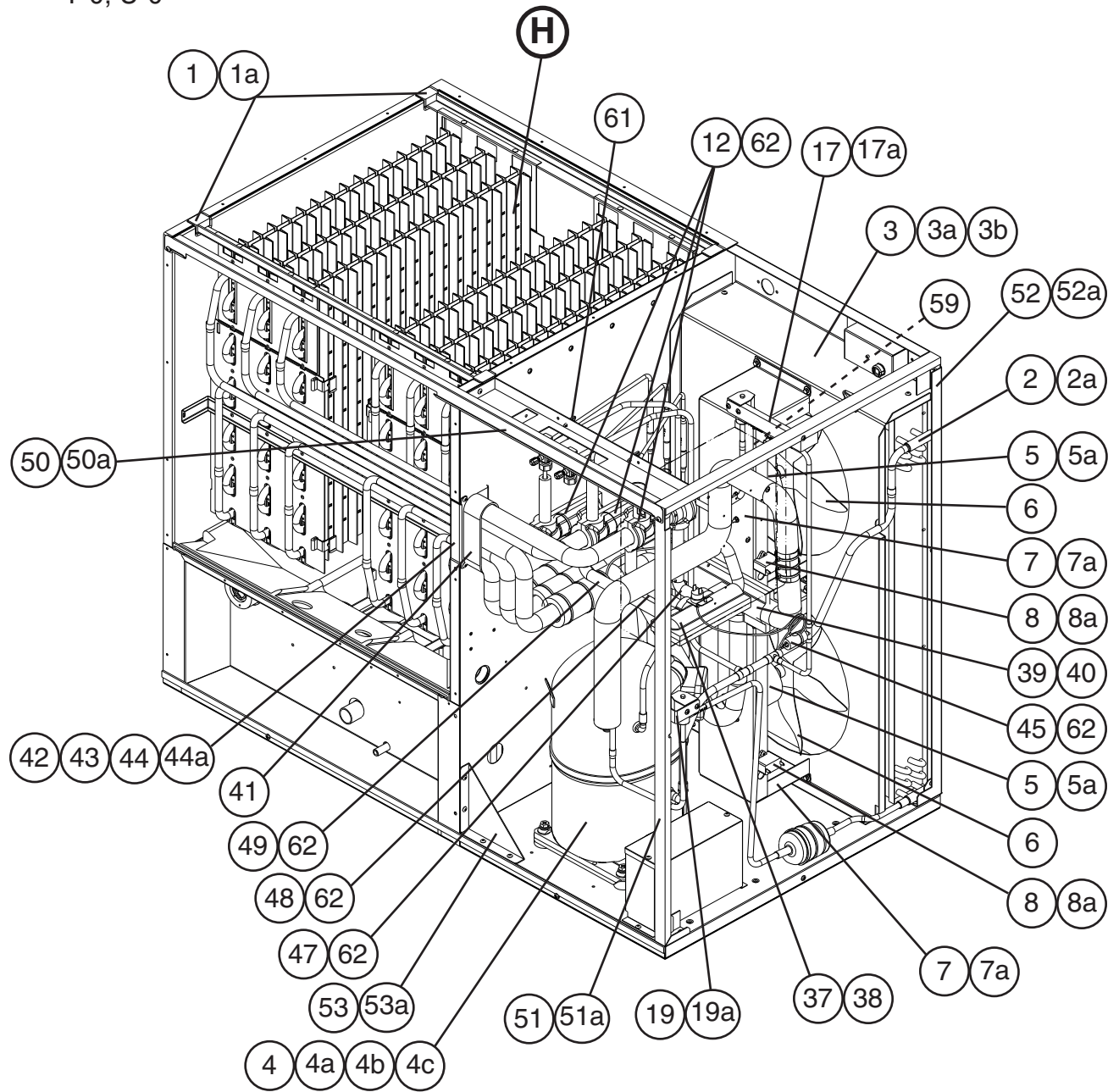
Title: A. Ice Cuber Assembly Model: KM-1900SRH/3												
Index No.	Description	Material or Model Number	Part Number	Required Number								
				T-0	U-0							
25	Bulb Holder (G)	-	439726-01	1								
25a	Truss Head Screw	4x6, SS	7C32-0406	2								
26	Silicone Hose	L=285	7730I3812	1								

B. Refrigeration Circuit

1/2

KM-1900SAH/3

T-0, U-0

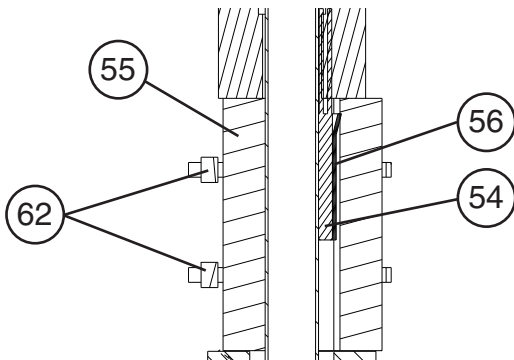
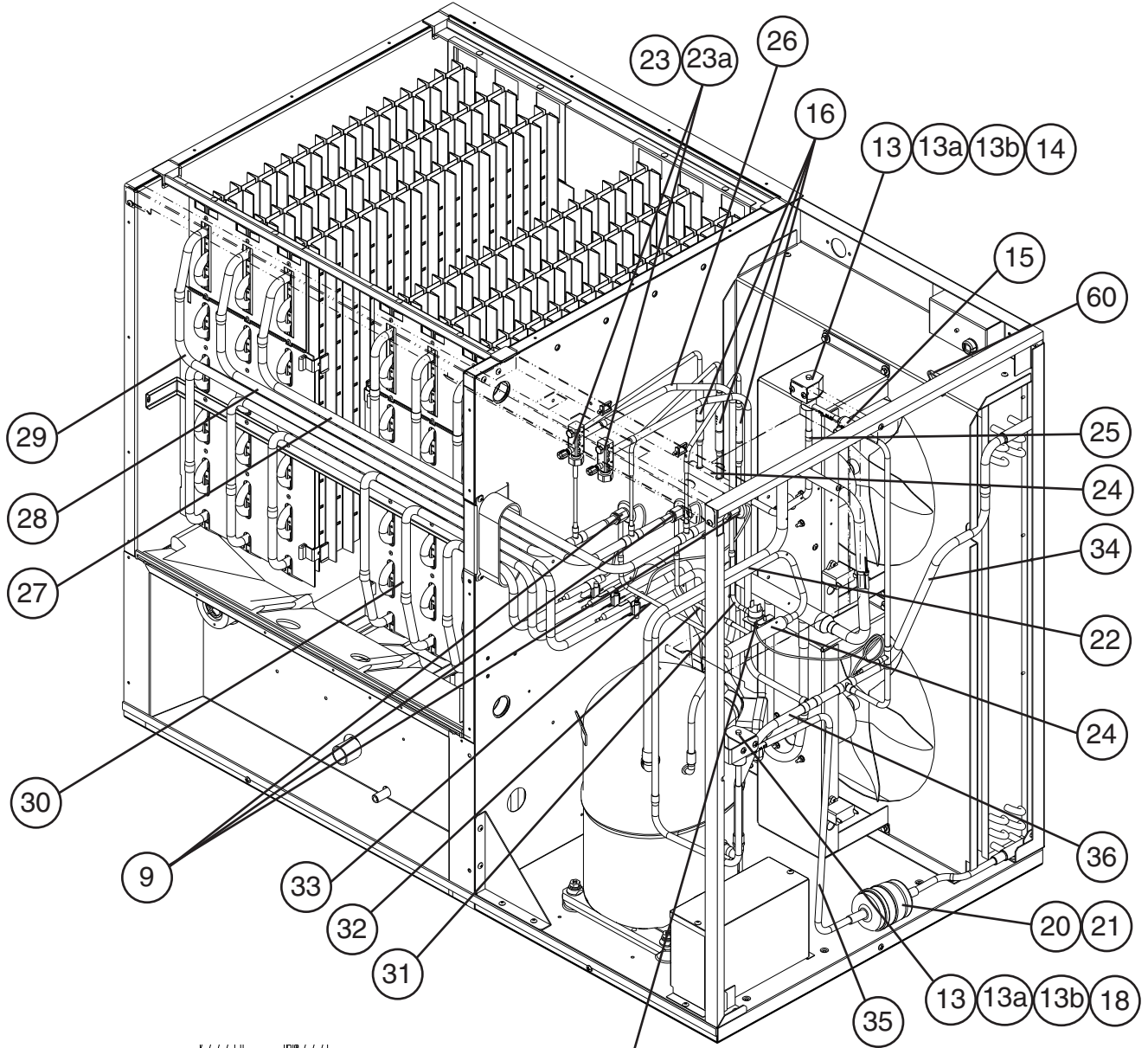


B. Refrigeration Circuit

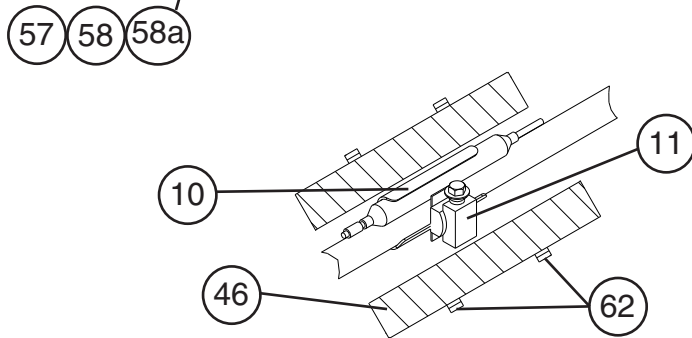
2/2

KM-1900SAH/3

T-0, U-0



Detailed Thermistor Attachment



Detailed TXV Bulb Attachment

Title: B. Refrigeration Circuit Model: KM-1900SAH/3												
Index No.	Description	Material or Model Number	Part Number	Required Number								
				T-0	U-0							
H	Evaporator Assembly	-	105103A01	1								
1	Frame Seal	-	323925-01	4								
1a	T2 Screw	4x12, SS	7P32-0412	4								
2	Condenser	-	2A1991-01	1								
2a	T2 Screw	4x8	7P31-0408	2								
3	Shroud	-	2A2021G01	1								
3a	Hex Head Bolt w/Washer (LF)	5x10	7B0130510	2								
3b	T2 Screw	4x8	7P31-0408	4								
4	Compressor	KM-1900SAH CS16K6E-PFV-237	4A4581-01	1								
		KM-1900SAH3 CS16K6E-TF5-237	4A4582-01	1								
4a	Spacer	-	434921-01	4								
4b	Grommet	-	434922-01	4								
4c	Hex Head Bolt w/Washer	8x45	437889-01	4								
5	Fan Motor	50 Watt GEHL	4A3158-01	2								
5a	Self-Locking Nut	8-32	7N2110832	8								
6	Fan Blade	-	4A0197-01	2								
7	Fan Motor Bracket	-	2A1979-01	2								
7a	Hex Head Bolt w/Washer (LF)	5x10	7B0130510	8								
8	Capacitor-Fan	5.0MFD, 250V	443192-02	2								
8a	T2 Screw	4x8	7P31-0408	2								
9	Expansion Valve	-	4A1414-01	3								
10	Holder-Expansion Valve	-	3A0107-01	3								
11	Clamp	-	443461-02	3								
12	Expansion Valve Cover	-	3A0944-01	3								
13	Coil-Valve	-	4A3277-01	2								
13a	Bolt	-	4A3277F01	2								
13b	Truss Head Screw	4x8	7C31-0408	4								
14	Valve Body-Hot Gas	-	4A3978-01	1								
15	Strainer	-	441569-02	1								
16	Check Valve	-	4A1373-01	3								
17	Hot Gas Valve Bracket	-	442162-01	1								
17a	T2 Screw	4x8	7P31-0408	2								
18	Valve Body-Line	-	4A3276-01	1								
19	Line Valve Bracket	-	4A1406-01	1								
19a	T2 Screw	4x8	7P31-0408	2								
20	Drier	-	4A2663-01	1								
21	Nylon Tie	-	8911-0301	1								
22	Heat Exchanger	-	2A4785G01	1								
23	Service Valve	-	4A3420-01	2								
23a	Hex Head Tapping Screw	1/4-20x1/2	7B0311412	2								
24	Header-S	-	441038-01	2								
25	Copper Tube-Hot Gas	-	4A1463-01	1								
26	Copper Tube-Service Valve	-	2A4797-01	1								
27	Copper Tube (A)-Low Side	-	2A4799G01	1								
28	Copper Tube (B)-Low Side	-	2A4800G01	1								
29	Copper Tube (C)-Low Side	-	2A4801G01	1								

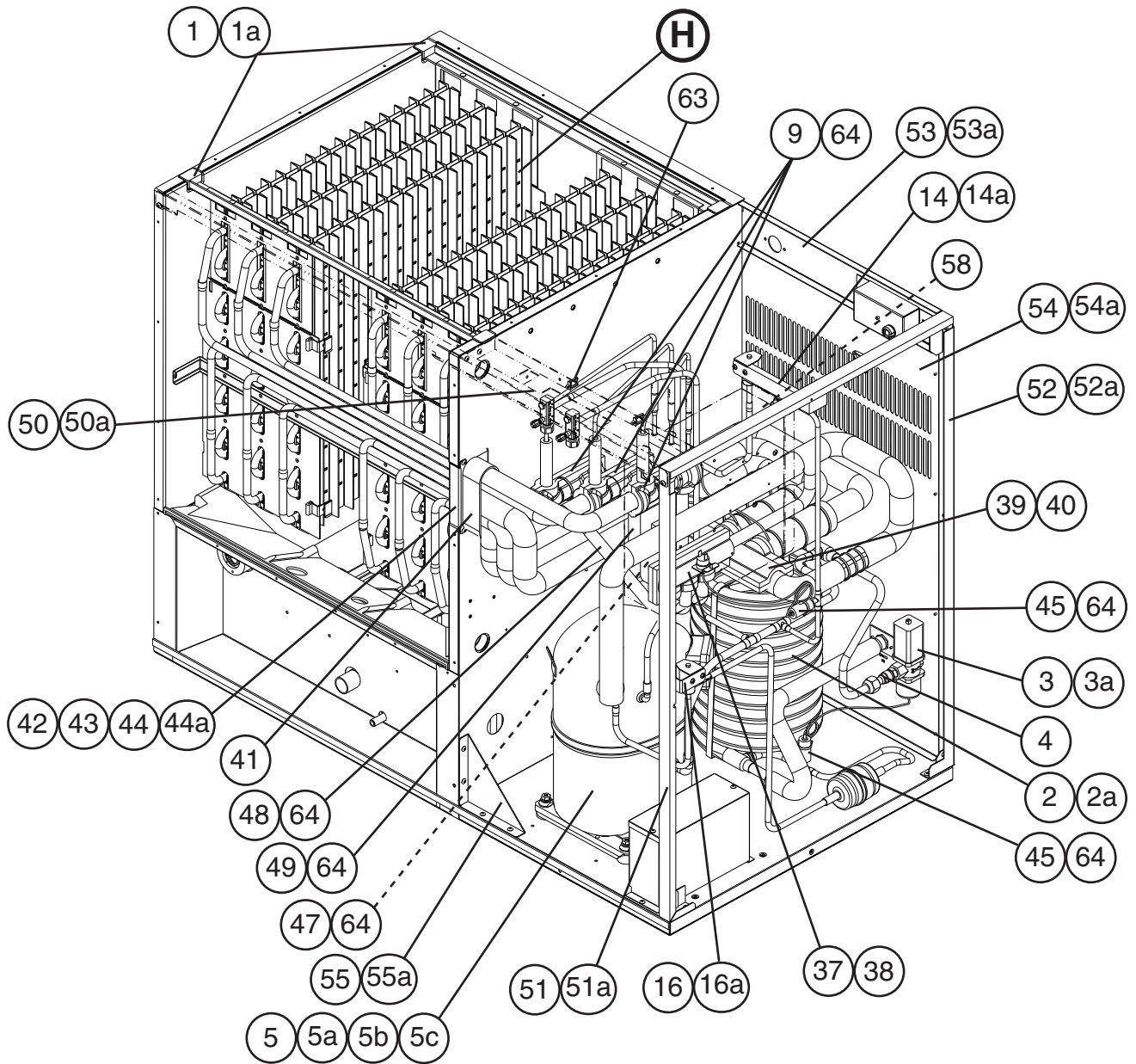
Title: B. Refrigeration Circuit Model: KM-1900SAH/3												
Index No.	Description	Material or Model Number	Part Number	Required Number								
				T-0	U-0							
30	Copper Tube (D)-Low Side (includes item 46)	-	2A4783G01	1								
31	Copper Tube (A)-Expansion Valve	-	3A5025-01	1								
32	Copper Tube (B)-Expansion Valve	-	3A5025-02	1								
33	Copper Tube (C)-Expansion Valve	-	3A5025-03	1								
34	Copper Tube (B)-High Side	-	2A4794-01	1								
35	Copper Tube (F)-High Side	-	4A3910-01	1								
36	Copper Tube (Z)-High Side	-	2A4792G01	1								
37	Header Cover (A1)	-	325861-01	1								
38	Header Cover (A2)	-	325861-02	1								
39	Header Cover (B1)	-	325862-01	1								
40	Header Cover (B2)	-	325862-02	1								
41	Insulation	-	436671-01	1								
42	Rubber Insulation (A)	-	325864-01	1								
43	Rubber Insulation (B)	-	325865-01	1								
44	Insulation Holder	-	325863-01	1								
44a	T2 Screw	4x8, SS	7P32-0408	2								
45	Insulation Tube	L=40	7762-1020	1								
46	Insulation Tube	L=150	7762-3555	3								
47	Insulation Tube	L=200	7762-1020	1								
48	Insulation Tube	L=255	7762-1020	1								
49	Insulation Tube	L=310	7762-1020	1								
50	Front Frame (A)	-	3A4635-01	1								
50a	T2 Screw	4x8	7P31-0408	4								
51	Side Frame (A)	-	215375G01	1								
51a	T2 Screw	4x8	7P31-0408	3								
52	Side Frame (B)	-	215376G01	1								
52a	T2 Screw	4x8	7P31-0408	9								
53	Brace	-	325858-01	1								
53a	T2 Screw	4x8	7P31-0408	4								
54	Thermistor	L=1050	429006-03	1								
55	Insulation-Thermistor	-	427441-01	1								
56	Holder-Thermistor	-	438247-01	1								
57	Pressure Switch	-	433441-07	1								
58	Pressure Switch Bracket	-	434938-01	1								
58a	T2 Screw	4x8	7P31-0408	1								
59	Bushing	OCB-500	428394-02	1								
60	Clamp	-	4A2338-01	1								
61	Wire Saddle	-	4A0338-02	2								
62	Nylon Ties	CV-200	8911-0200	22								

B. Refrigeration Circuit

1/2

KM-1900SWH/3

T-0, U-0

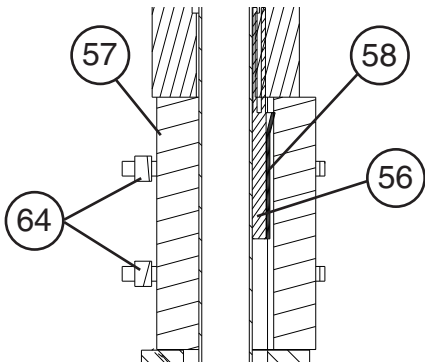
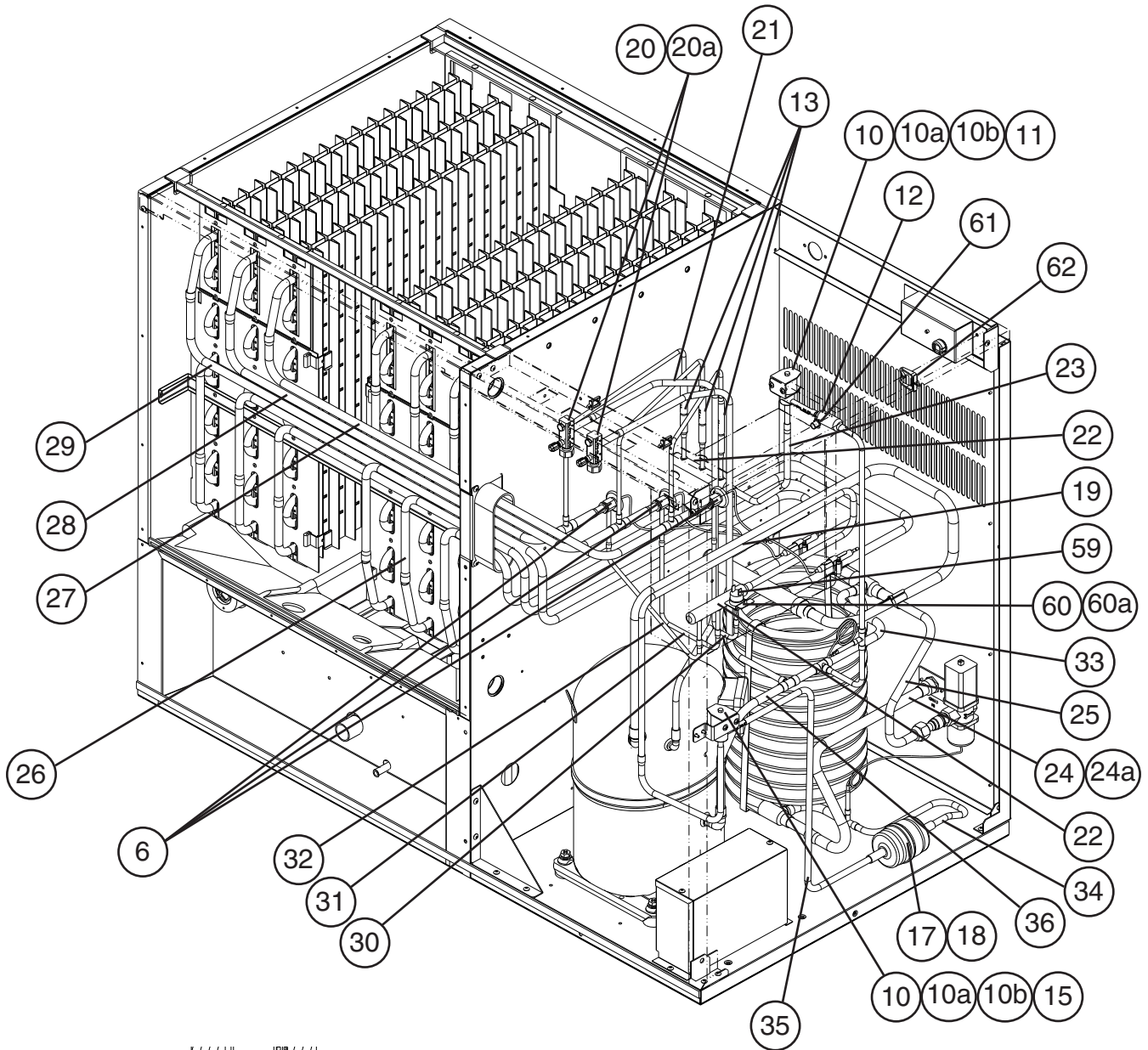


B. Refrigeration Circuit

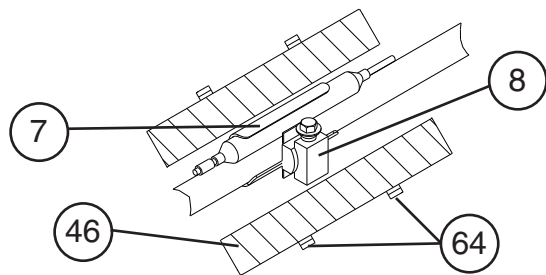
2/2

KM-1900SWH/3

T-0, U-0



Detailed Thermistor Attachment



Detailed TXV Bulb Attachment

Title: B. Refrigeration Circuit Model: KM-1900SWH/3												
Index No.	Description	Material or Model Number	Part Number	Required Number								
				T-0	U-0							
H	Evaporator Assembly	-	105103A01	1								
1	Frame Seal	-	323925-01	4								
1a	T2 Screw	4x12, SS	7P32-0412	4								
2	Condenser-Water Cooled	HS-0164	2A2359G05	1								
2a	Hex Head Bolt w/Washer	5x12	7B0130512	2								
3	Water Regulator	-	4A0911-07	1								
3a	Truss Head Screw	4x6	7C31-0406	2								
4	Male Connector	-	4A1087-01	1								
5	Compressor	KM-1900SWH CS16K6E-PFV-237	4A4581-01	1								
		KM-1900SWH3 CS16K6E-TF5-237	4A4582-01	1								
5a	Spacer	-	434921-01	4								
5b	Grommet	-	434922-01	4								
5c	Hex Head Bolt w/Washer	8x45	437889-01	4								
6	Expansion Valve	-	4A1414-01	3								
7	Holder-Expansion Valve	-	3A0107-01	3								
8	Clamp	-	443461-02	3								
9	Expansion Valve Cover	-	3A0944-01	3								
10	Coil-Valve	-	4A3277-01	2								
10a	Bolt	-	4A3277F01	2								
10b	Truss Head Screw	4x8	7C31-0408	4								
11	Valve Body-Hot Gas	-	4A3978-01	1								
12	Strainer	-	441569-02	1								
13	Check Valve	-	4A1373-01	3								
14	Hot Gas Valve Bracket	-	442162-01	1								
14a	T2 Screw	4x8	7P31-0408	2								
15	Valve Body-Line	-	4A3276-01	1								
16	Line Valve Bracket	-	4A1406-01	1								
16a	T2 Screw	4x8	7P31-0408	2								
17	Drier	-	4A2663-01	1								
18	Nylon Tie	PLWP3H-TL	8911-0301	1								
19	Heat Exchanger	-	2A4994G01	1								
20	Service Valve	-	4A3420-01	2								
20a	Hex Head Tapping Screw	1/4-20x1/2	7B0311412	2								
21	Copper Tube-Service Valve	-	2A4797-01	1								
22	Header-S	-	441038-01	2								
23	Copper Tube-Hot Gas	-	4A1463-01	1								
24	Copper Tube (A)	-	3A2315G01	1								
24a	T2 Screw	4x8	7P31-0408	2								
25	Copper Tube (B)	-	4A4604G01	1								
26	Copper Tube-Low Side (includes item 46)	-	106803G01	1								
27	Copper Tube (A)-Low Side	-	2A4799G02	1								
28	Copper Tube (B)-Low Side	-	2A4800G02	1								
29	Copper Tube (C)-Low Side	-	2A4801G02	1								

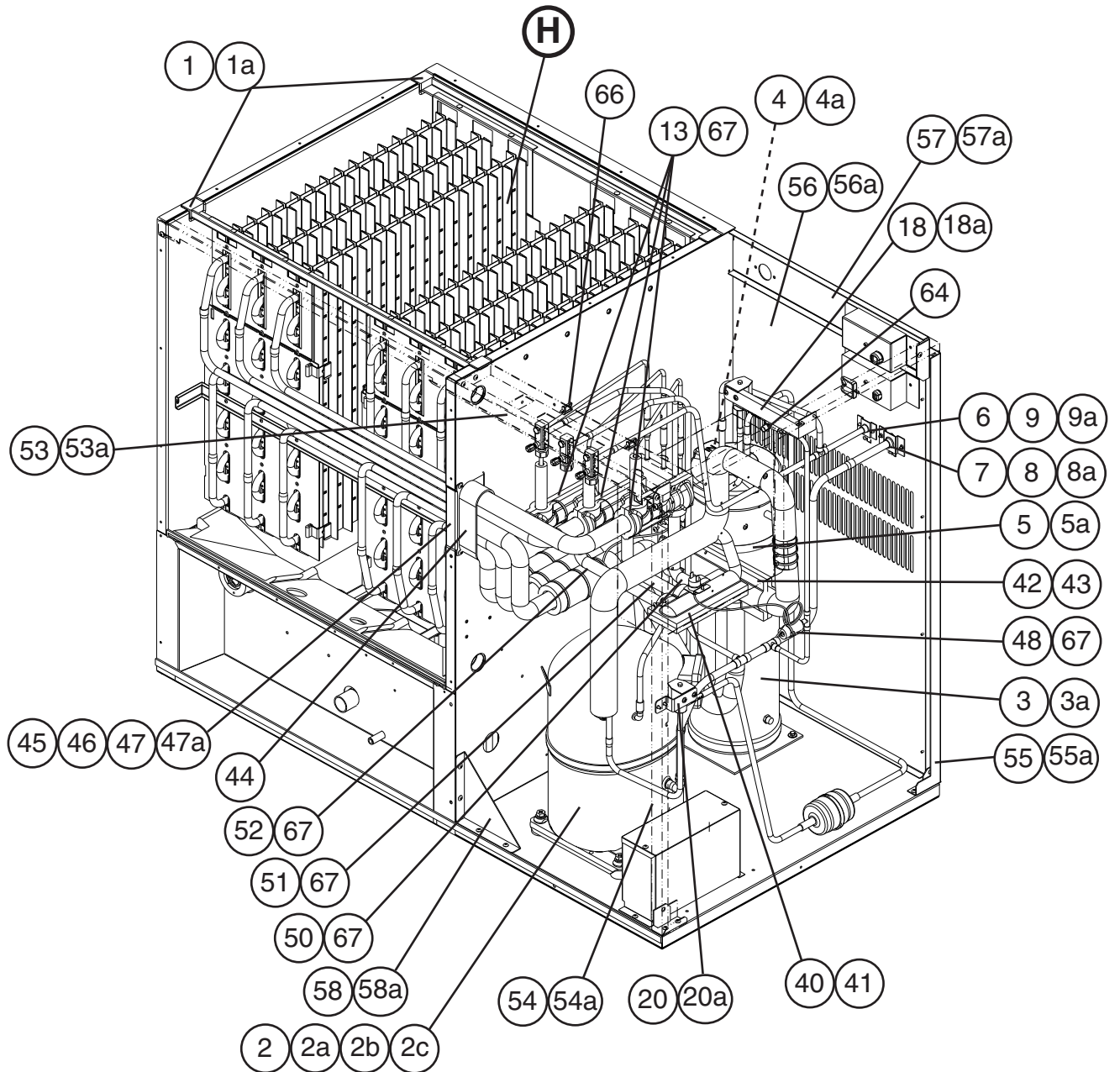
Title: B. Refrigeration Circuit Model: KM-1900SWH/3												
Index No.	Description	Material or Model Number	Part Number	Required Number								
				T-0	U-0							
30	Copper Tube (A)-Expansion Valve	-	4A4663-01	1								
31	Copper Tube (B)-Expansion Valve	-	4A4664-01	1								
32	Copper Tube (C)-Expansion Valve	-	4A4665-01	1								
33	Copper Tube (B)-High Side	-	2A4795-01	1								
34	Copper Tube (C)-High Side	-	4A2763G01	1								
35	Copper Tube (F)-High Side	-	3A2343-01	1								
36	Copper Tube (Z)-High Side	-	2A4792G01	1								
37	Header Cover (A1)	-	325861-01	1								
38	Header Cover (A2)	-	325861-02	1								
39	Header Cover (B1)	-	325862-01	1								
40	Header Cover (B2)	-	325862-02	1								
41	Insulation	-	436671-01	1								
42	Rubber Insulation (A)	-	325864-01	1								
43	Rubber Insulation (B)	-	325865-01	1								
44	Insulation Holder	SS	325863-01	1								
44a	T2 Screw	4x8, SS	7P32-0408	2								
45	Insulation Tube	L=40	7762-1020	2								
46	Insulation Tube	L=150	7762-3555	3								
47	Insulation Tube	L=320	7762-1020	1								
48	Insulation Tube	L=360	7762-1020	1								
49	Insulation Tube	L=370	7762-1020	1								
50	Front Frame (A)	-	3A4635-01	1								
50a	T2 Screw	4x8	7P31-0408	4								
51	Side Frame (A)	-	215375G01	1								
51a	T2 Screw	4x8	7P31-0408	3								
52	Side Frame (B)	-	215376G01	1								
52a	T2 Screw	4x8	7P31-0408	4								
53	Rear Frame	-	439285G04	1								
53a	T2 Screw	4x8	7P31-0408	2								
54	Rear Panel	-	2A4806-01	1								
54a	T2 Screw	4x8	7P31-0408	10								
55	Brace	-	325858-01	1								
55a	T2 Screw	4x8	7P31-0408	4								
56	Thermistor	L=1050	429006-03	1								
57	Insulation-Thermistor	-	427441-01	1								
58	Holder-Thermistor	-	438247-01	1								
59	Pressure Switch	-	433441-05	1								
60	Pressure Switch Bracket	-	434938-01	1								
60a	T2 Screw	4x8	7P31-0408	1								
61	Bushing	OCB-500	428394-02	1								
62	Clamp	-	4A2338-01	1								
63	Wire Saddle	-	4A0338-02	2								
64	Nylon Tie	CV-200	8911-0200	23								

B. Refrigeration Circuit

1/2

KM-1900SRH/3

T-0, U-0

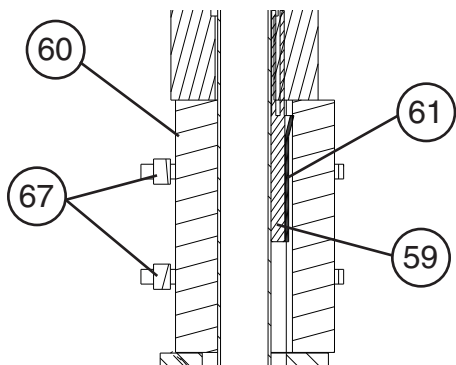
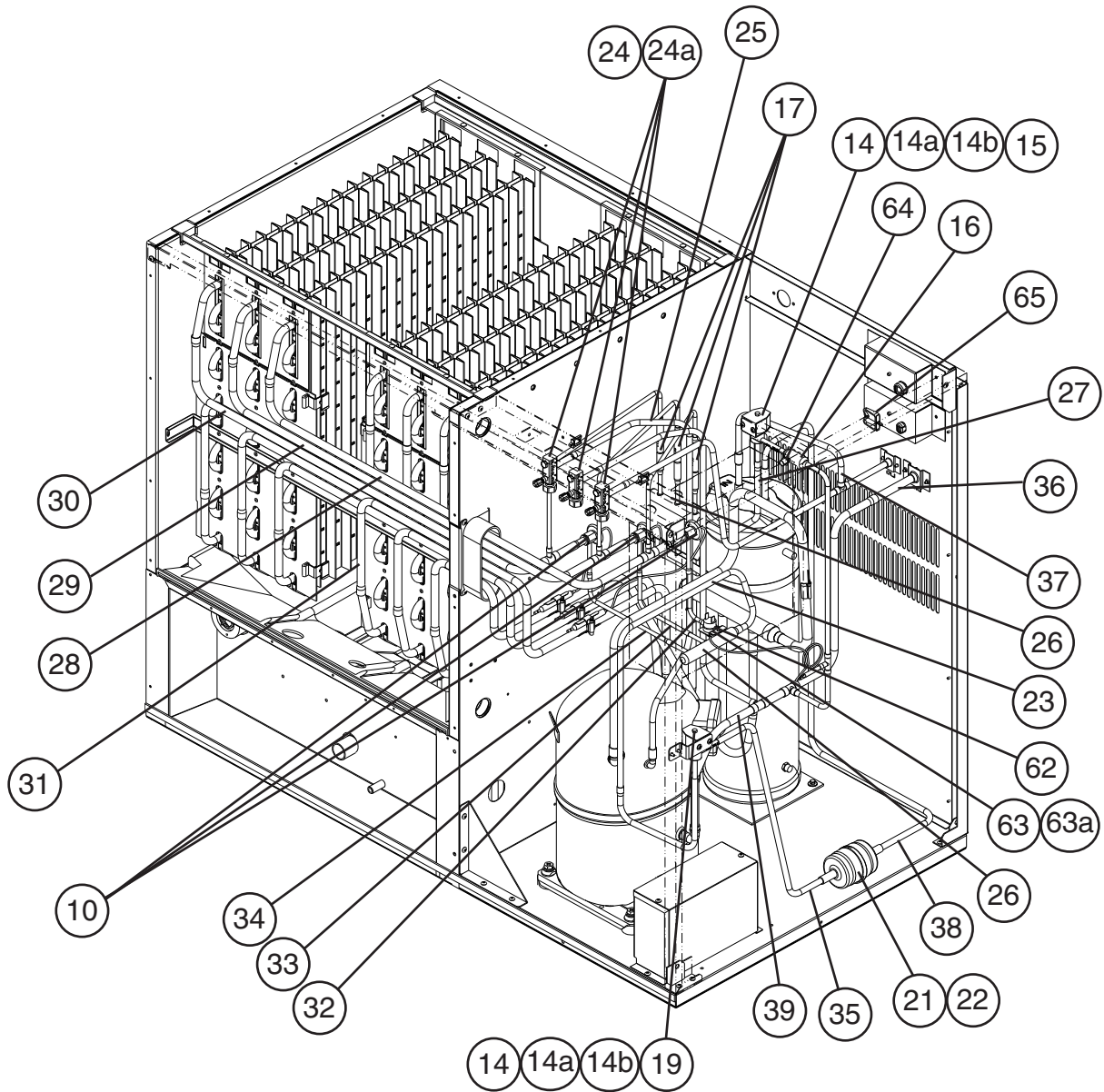


B. Refrigeration Circuit

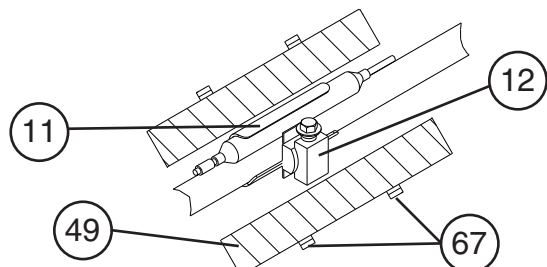
2/2

KM-1900SRH/3

T-0, U-0



Detailed Thermistor Attachment



Detailed TXV Bulb Attachment

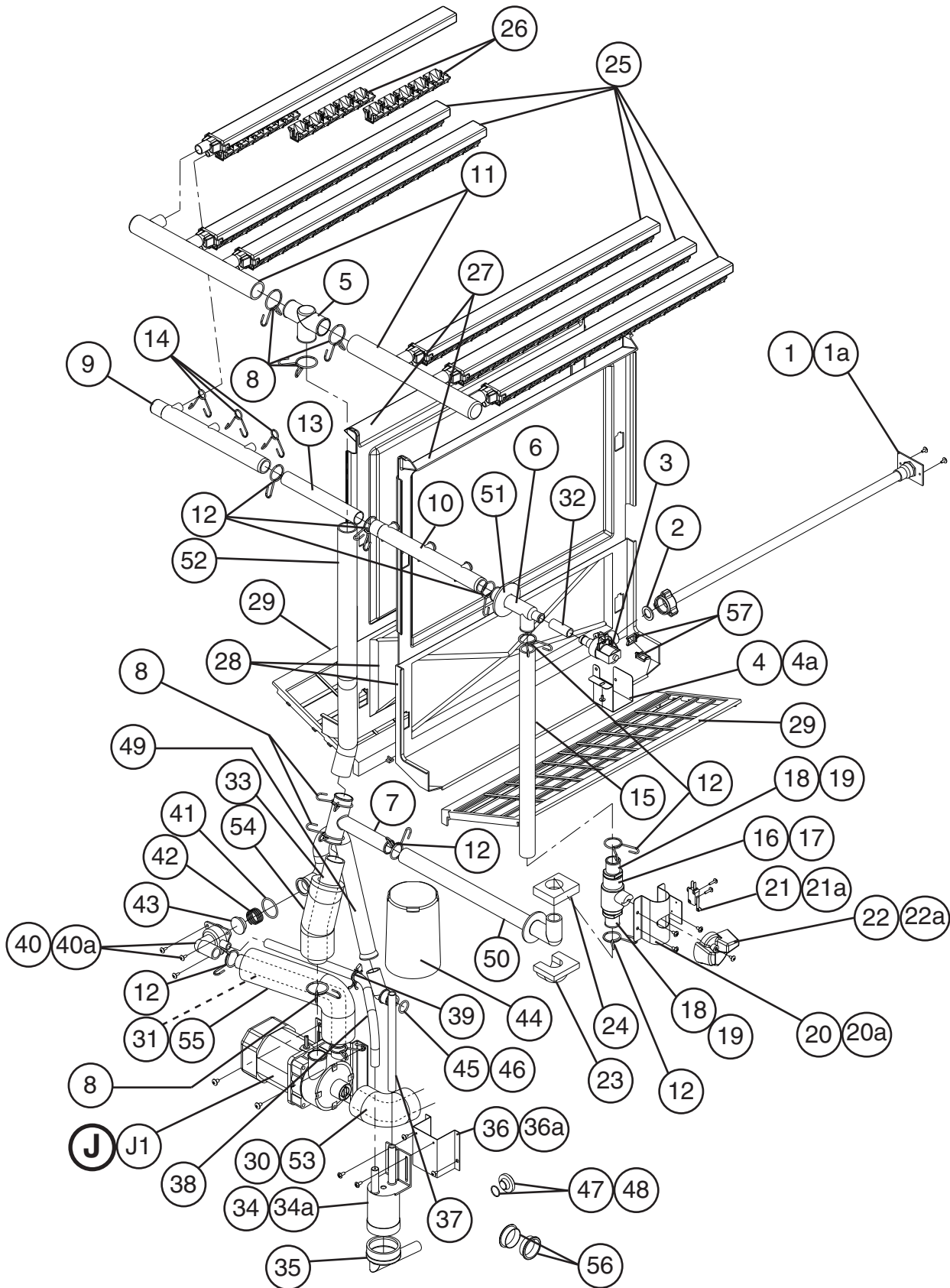
Title: B. Refrigeration Circuit Model: KM-1900SRH/3												
Index No.	Description	Material or Model Number	Part Number	Required Number								
				T-0	U-0							
H	Evaporator Assembly	-	105103A01	1								
1	Frame Seal	-	323925-01	4								
1a	T2 Screw	4x12, SS	7P32-0412	4								
2	Compressor	KM-1900SRH CS16K6E-PFV-279	4A4581-02	1								
		KM-1900SRH3 CS16K6E-TF5-279	4A4582-02	1								
2a	Spacer	-	434921-01	4								
2b	Grommet	-	434922-01	4								
2c	Hex Head Bolt w/Washer	8x45	437889-01	4								
3	Receiver Tank	-	440366-01	1								
3a	Hex Head Bolt w/Washer (LF)	5x10	7B0130510	3								
4	Receiver Bracket (A)	-	327093-01	1								
4a	T2 Screw	4x8	7P31-0408	2								
5	Receiver Bracket (B)	-	440860-01	1								
5a	T2 Screw	4x8	7P31-0408	1								
6	Coupling	-	433751G01	1								
7	Coupling	-	434136G01	1								
8	Tube Holder-L	-	438245-01	1								
8a	T2 Screw	4x8	7P31-0408	2								
9	Tube Holder-S	-	438246-01	1								
9a	T2 Screw	4x8	7P31-0408	2								
10	Expansion Valve	-	4A1414-01	3								
11	Holder Expansion Valve	-	3A0107-01	3								
12	Clamp	-	443461-02	3								
13	Expansion Valve Cover	-	3A0944-01	3								
14	Coil Valve	-	4A3277-01	2								
14a	Bolt	-	4A3277F01	2								
14b	Truss Head Screw	4x8	7C31-0408	4								
15	Valve Body-Hot Gas	-	4A3978-01	1								
16	Strainer	-	441569-02	1								
17	Check Valve	-	4A1373-01	3								
18	Hot Gas Valve Bracket	-	442162-01	1								
18a	T2 Screw	4x8	7P31-0408	2								
19	Valve Body-Line	-	4A3276-01	1								
20	Line Valve Bracket	-	4A1406-01	1								
20a	T2 Screw	4x8	7P31-0408	2								
21	Drier	-	4A2663-01	1								
22	Nylon Tie	PLWP3H-TL	8911-0301	1								
23	Heat Exchanger	-	2A4785G01	1								
24	Service Valve	-	4A3420-01	3								
24a	Hex Head Tapping Screw	1/4-20x1/2	7B0311412	3								
25	Copper Tube-Service Valve	-	2A4797-01	1								
26	Header-S	-	441038-01	2								
27	Copper Tube-Hot Gas	-	4A1463-01	1								
28	Copper Tube (A)-Low Side	-	2A4799G01	1								
29	Copper Tube (B)-Low Side	-	2A4800G01	1								
30	Copper Tube (C)-Low Side	-	2A4801G01	1								

Title: B. Refrigeration Circuit Model: KM-1900SRH/3													
Index No.	Description	Material or Model Number	Part Number	Required Number									
				T-0	U-0								
31	Copper Tube (D)-Low Side (includes item 49)	-	2A4783G01	1									
32	Copper Tube (A)-Expansion Valve	-	3A5025-01	1									
33	Copper Tube (B)-Expansion Valve	-	3A5025-02	1									
34	Copper Tube (C)-Expansion Valve	-	3A5025-03	1									
35	Copper Tube (A)-High Side	-	3A4915-01	1									
36	Copper Tube (B)-High Side	-	2A4796-01	1									
37	Copper Tube (D)-High Side	-	2A4798G01	1									
38	Copper Tube (E)-High Side	-	3A4933-01	1									
39	Copper Tube (Z)-High Side	-	2A4792G01	1									
40	Header Cover (A1)	-	325861-01	1									
41	Header Cover (A2)	-	325861-02	1									
42	Header Cover (B1)	-	325862-01	1									
43	Header Cover (B2)	-	325862-02	1									
44	Insulation	-	436671-01	1									
45	Rubber Insulation (A)	-	325864-01	1									
46	Rubber Insulation (B)	-	325865-01	1									
47	Insulation Holder	SS	325863-01	1									
47a	T2 Screw	4x8, SS	7P32-0408	2									
48	Insulation Tube	L=40	7762-1020	1									
49	Insulation Tube	L=150	7762-3555	1									
50	Insulation Tube	L=200	7762-1020	1									
51	Insulation Tube	L=255	7762-1020	1									
52	Insulation Tube	L=305	7762-1020	1									
53	Front Frame (A)	-	3A4635-01	1									
53a	T2 Screw	4x8	7P31-0408	4									
54	Side Frame (A)	-	215375G01	1									
54a	T2 Screw	4x8	7P31-0408	3									
55	Side Frame (B)	-	215376G01	1									
55a	T2 Screw	4x8	7P31-0408	4									
56	Rear Panel	-	215378G01	1									
56a	T2 Screw	4x8	7P31-0408	10									
57	Rear Frame	-	439285G04	1									
57a	T2 Screw	4x8	7P31-0408	2									
58	Brace	-	325858-01	1									
58a	T2 Screw	4x8	7P31-0408	4									
59	Thermistor	L=1050	429006-03	1									
60	Insulation-Thermistor	-	427441-01	1									
61	Holder-Thermistor	-	438247-01	1									
62	Pressure Switch	-	433441-07	1									
63	Pressure Switch Bracket	-	434938-01	1									
63a	T2 Screw	4x8	7P31-0408	1									
64	Bushing	OCB-500	428394-02	1									
65	Clamp	-	4A2338-01	1									
66	Wire Saddle	-	4A0338-02	2									
67	Nylon Tie	CV-200	8911-0200	22									

C. Water Circuit

KM-1900SAH/3, KM-1900SWH/3, KM-1900SRH/3

T-0, U-0



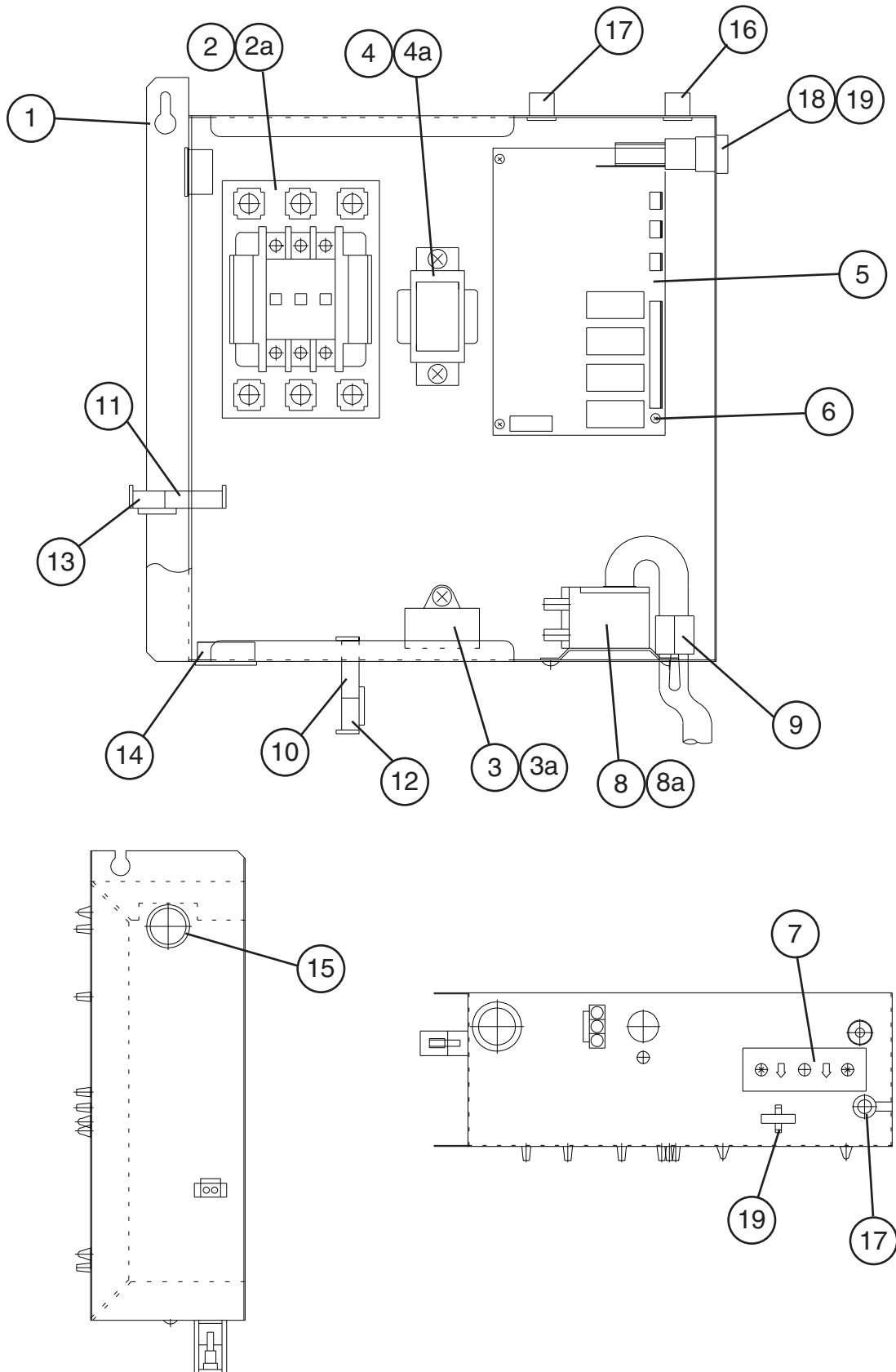
Title: C. Water Circuit Model: KM-1900SAH/3, KM-1900SWH/3, KM-1900SRH/3												
Index No.	Description	Material or Model Number	Part Number	Required Number								
				T-0	U-0							
J	Pump Motor Assembly	S-0730	215692A03	1								
J1	Truss Head Screw	5x8, SS	7C32-0508	2								
1	Water Supply Pipe	-	4A0768G04	1								
1a	T2 Screw	4x8	7P31-0408	2								
2	Rubber Gasket	-	413854-03	1								
3	Water Valve	-	4A1176-04	1								
4	Water Valve Bracket	-	3A2685-01	1								
4a	T2 Screw	4x8	7P31-0408	1								
5	Distributor (A)	-	439266-01	1								
6	Distributor (B)	-	439239-01	1								
7	Distributor (C)	-	439238-01	1								
8	Hose Clamp	32mm, SS	427443-09	6								
9	Distributor Hose (A)	-	325738-01	1								
10	Distributor Hose (B)	-	325738-02	1								
11	Distributor Hose (C)	-	325739-01	2								
12	Hose Clamp	25mm, SS	427443-03	9								
13	Joint Pipe	-	439297-01	1								
14	Hose Clamp	13.5mm, SS	427443-07	6								
15	Joint Hose	-	439309-01	1								
16	Ball Valve Assembly (includes items 17, 18, and 19)	S-0761	442137A01	1								
17	Ball Valve	-	439293-01	1								
18	Male Adapter	-	325826-01	2								
19	"O" Ring	-	7611-P018	2								
20	Valve Holder	-	3A1178-01	1								
20a	Truss Head Screw	4x8	7C31-0408	3								
21	Microswitch	-	4A2546-01	1								
21a	Tapping Screw	3x14	431415-02	2								
22	Handle	-	215383-01	1								
22a	T2 Screw	4x8	7P31-0408	1								
23	Corner Insulation (A)	-	439376-01	1								
24	Corner Insulation (B)	-	439392-01	1								
25	Spray Tube	-	437049G01	6								
26	Spray Guide (A)	-	208586-01	18								
27	Separator (A)	-	215046-01	2								
28	Separator (B)	-	2A0100-01	2								
29	Cube Guide	-	214243-01	2								
30	Hose (A)	Black, EPDM	435091-01	1								
31	Hose (B)	-	325867-01	1								
32	Vinyl Hose	L=40	7716-1216	1								
33	Vinyl Hose	L=230	7716-2732	1								
34	Float Switch	-	4A3624-01	1								
34a	Truss Head Screw	4x10, SS	7C32-0410	2								
35	Connector-Float Switch	-	426799-04	1								
36	Float Switch Bracket	SS	3A0449-01	1								
36a	T2 Screw	4x8, SS	7P32-0408	2								
37	Silicone Hose	L=190	773013812	1								

Title: C. Water Circuit Model: KM-1900SAH/3, KM-1900SWH/3, KM-1900SRH/3												
Index No.	Description	Material or Model Number	Part Number	Required Number								
				T-0	U-0							
38	Silicone Hose	L=430	773013896	1								
39	Clamp	-	427902-05	1								
40	Valve Housing-Drain	ABS, White	323613-01	1								
40a	T2 Screw	4x10, SS	7P32-0410	3								
41	"O" Ring	-	7611-G035	1								
42	Spring	-	322110-01	1								
43	Valve Seat	Black, EPDM	433705-01	1								
44	Overflow Cap	-	325866-01	1								
45	Joint-Overflow	-	323923-02	1								
46	"O" Ring	-	7611-P018	1								
47	Drain Plug	-	309246-01	1								
48	"O" Ring	-	7611-P015	1								
49	Drain Hose	-	325869-01	1								
50	Bypass Hose	-	439237-02	1								
51	Flange	-	439267-02	1								
52	Vinyl Hose	L=550	7716-2732	1								
53	Insulation Tubing	L=120	7762-3555	1								
54	Insulation Tubing	L=130	7762-3555	1								
55	Insulation Tubing	L=200	7762-3555	1								
56	Bushing	SB-1500-21	420470-06	2								
57	Wire Saddle	-	4A0338-02	8								

D. Control Box Assembly

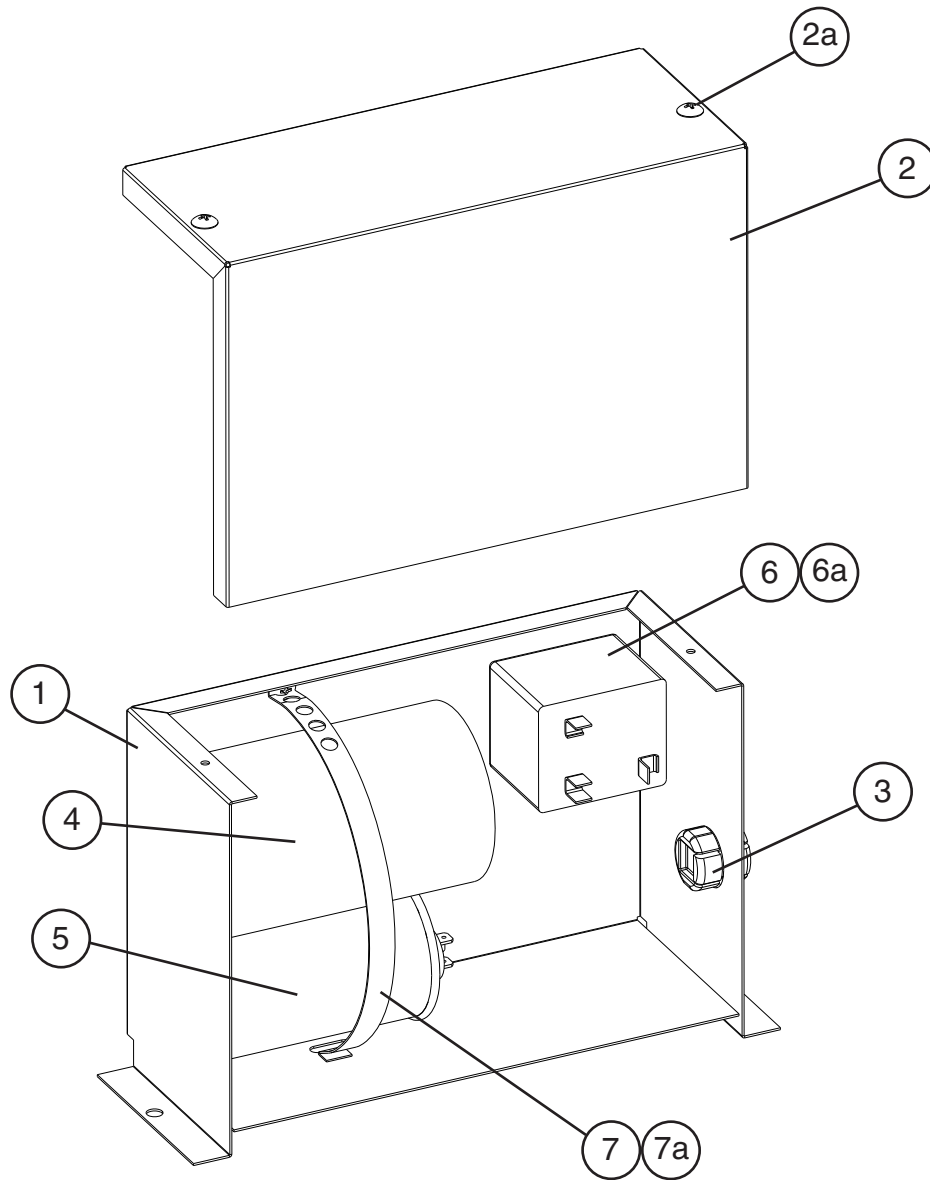
KM-1900SAH/3, KM-1900SWH/3, KM-1900SRH/3

T-0, U-0



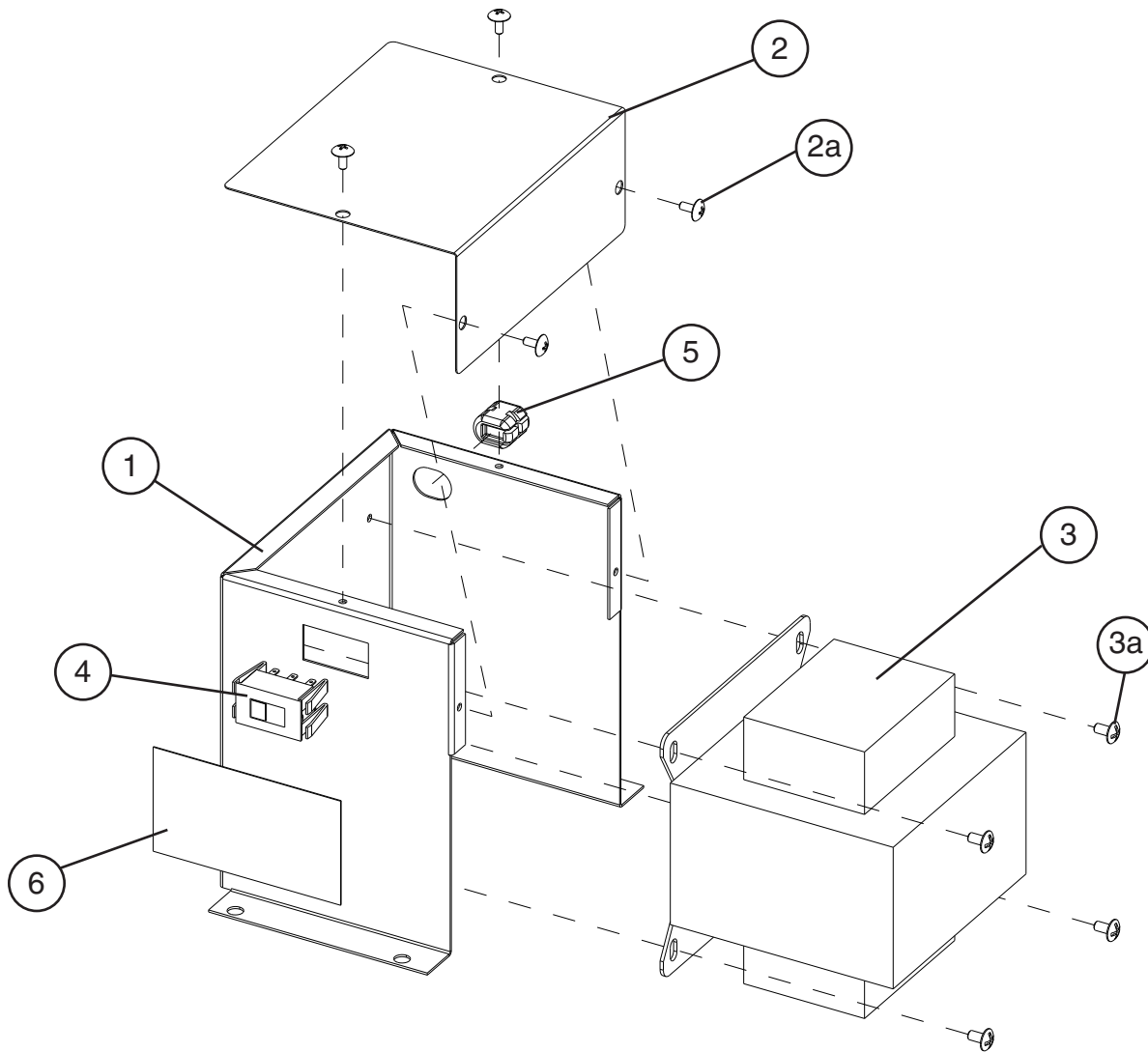
Title: D. Control Box Assembly Model: KM-1900SAH/3, KM-1900SWH/3, KM-1900SRH/3												
Index No.	Description	Material or Model Number	Part Number	Required Number								
				T-0 U-0								
1	Control Box	-	2A2524G02	1								
2	Magnetic Contactor	-	4A0794-01	1								
2a	Truss Head Screw	4x12	7C31-0412	2								
3	Capacitor-Pump Motor	10.0MFD, 250VAC	443192-01	1								
3a	T2 Screw	4x10	7P31-0410	1								
4	Transformer	-	3A0172-01	1								
4a	T2 Screw	4x8	7P31-0408	2								
5	Control Board	-	2A1410-01	1								
6	Board Support	-	4A0336-03	4								
7	Control Label	-	4A1758-01	1								
8	Thermostat	-	4A2879-02	1								
8a	Truss Head Screw	4x6	7C31-0406	2								
9	Toggle Switch	-	443119-01	1								
10	3P Plug Housing	3P 3191-03P	412832-06	1								
11	2P Plug Housing	2P 3191-02P	412832-07	1								
12	3P Receptacle Housing	3P 3191-03R1	412831-06	1								
13	2P Receptacle Housing	2P 3191-02R1	412831-07	1								
14	Bushing	SB-1093-15	420470-03	1								
15	Bushing	SB-1093-13	420470-12	1								
16	Bushing	OCB-500	428394-02	1								
17	Bushing	OCB-875	428394-04	2								
18	Fuse Holder	-	4A3449-01	1								
19	Fuse	10A 250V	4A0893-07	2								

E. Capacitor Box Assembly
KM-1900SAH, KM-1900SWH, KM-1900SRH
 T-0, U-0



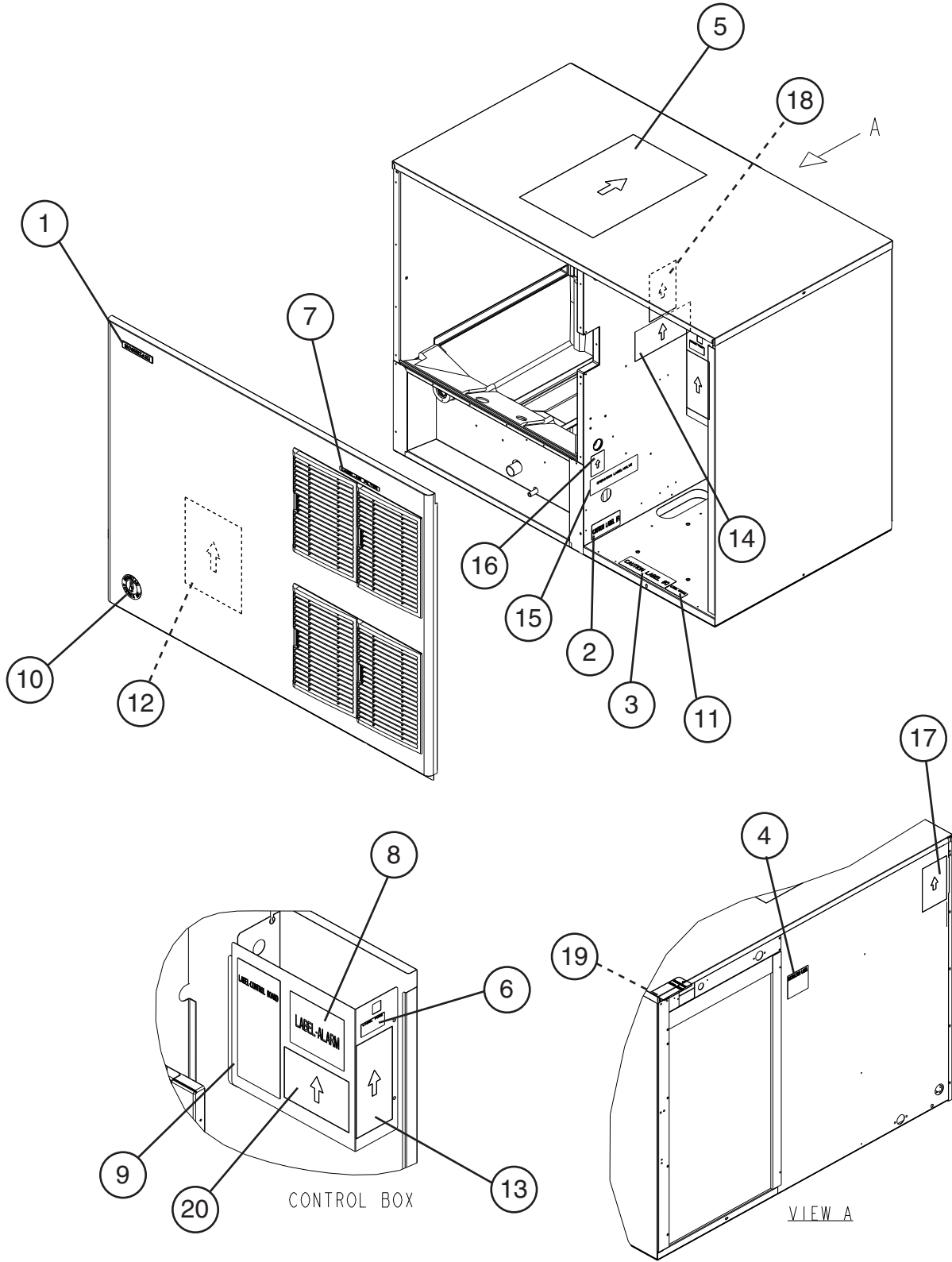
Title: E. Capacitor Box Assembly Model: KM-1900SAH, KM1900SWH, KM-1900SRH					Required Number										
Index No.	Description	Material or Model Number	Part Number	T-0											
				U-0											
1	Capacitor Box	-	326124-02	1											
2	Capacitor Box Cover	-	326125-01	1											
2a	T2 Screw	4x8	7P31-0408	2											
3	Bushing	SR-34-2	420472-05	1											
4	Capacitor-Start	189-227 MFD, 330V	3A0076-12	1											
5	Capacitor-Run	35MFD, 440V	3A2005-12	1											
6	Starter (Relay)	-	4A1107-09	1											
6a	T2 Screw	4x8	7P31-0408	1											
7	Strap	-	4A2262-04	1											
7a	T2 Screw	4x8	7P31-0408	1											

F. Transformer Box Assembly
KM-1900SAH3, KM-1900SWH3, KM-1900SRH3
 T-0, U-0



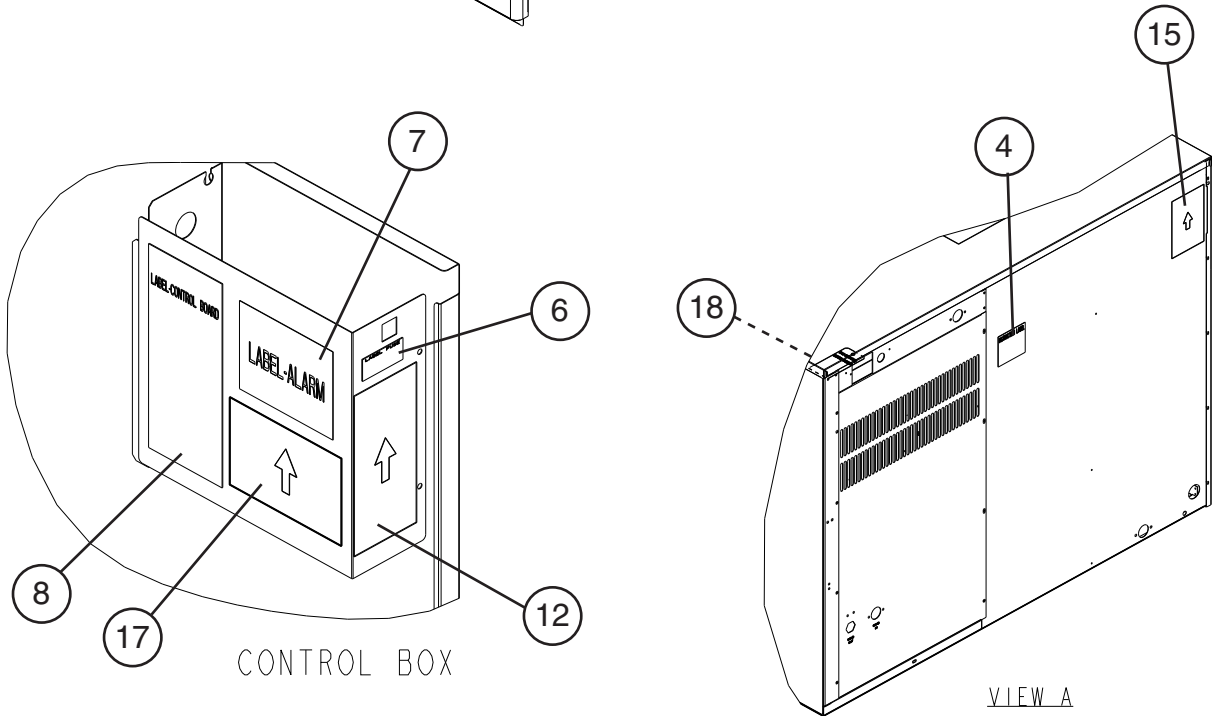
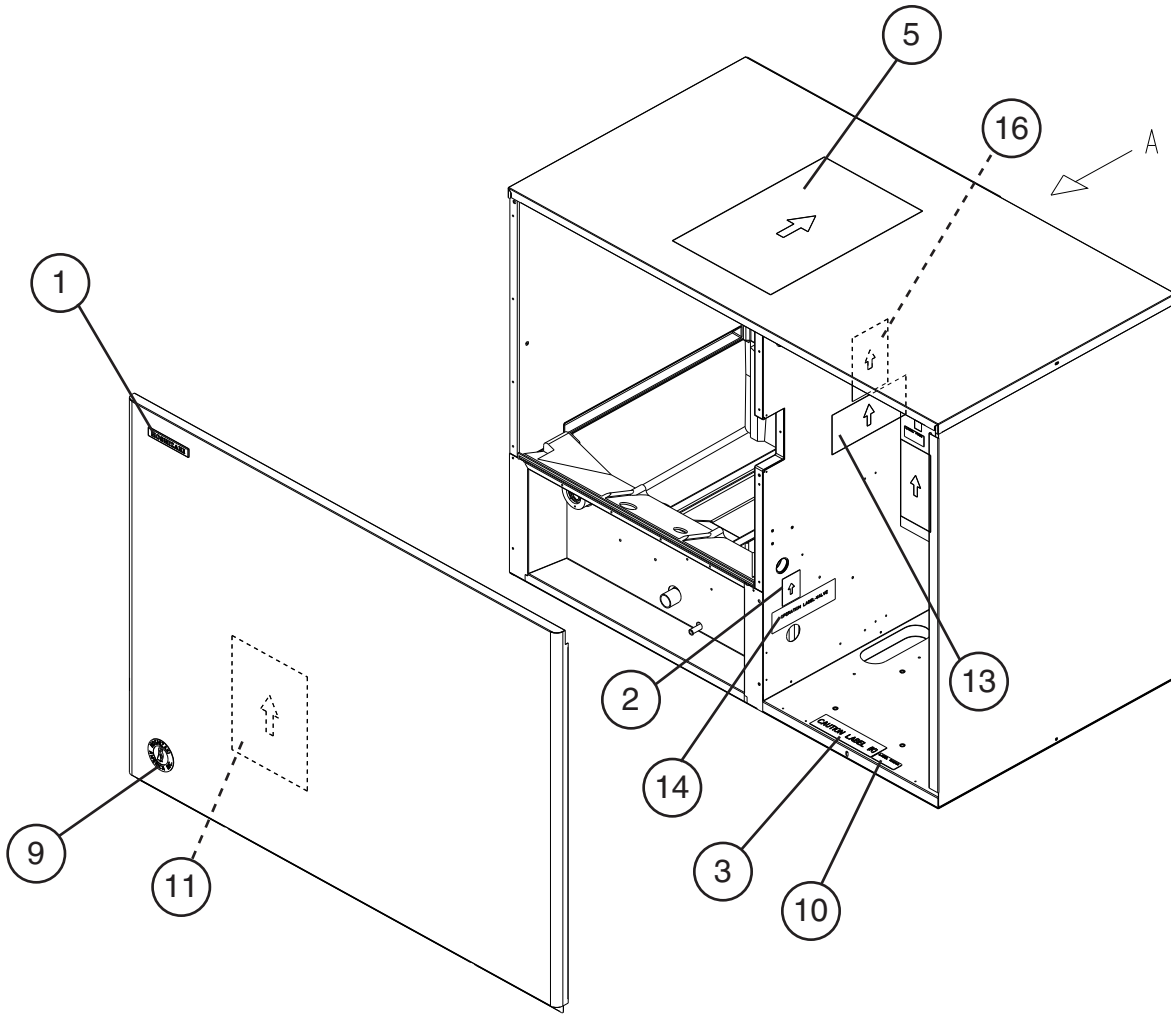
Title: F. Transformer Box Assembly Model: KM-1900SAH3, KM-1900SWH3, KM-1900SRH3																	
Index No.	Description	Material or Model Number	Part Number	Required Number													
				T-0	U-0												
1	Transformer Box	-	3A1101-01	1													
2	Transformer Box Cover	-	438467-01	1													
2a	T2 Screw	4x8	7P31-0408	4													
3	Transformer	-	4A0817-01	1													
3a	Truss Head Screw	4x8	7C31-0408	4													
4	Slide Switch	-	4A1477-01	1													
5	Bushing	SR-30-1	420472-03	1													
6	Manual Label-Tap Switch	-	439423-01	1													

G. Label Location
KM-1900SAH/3
 T-0, U-0



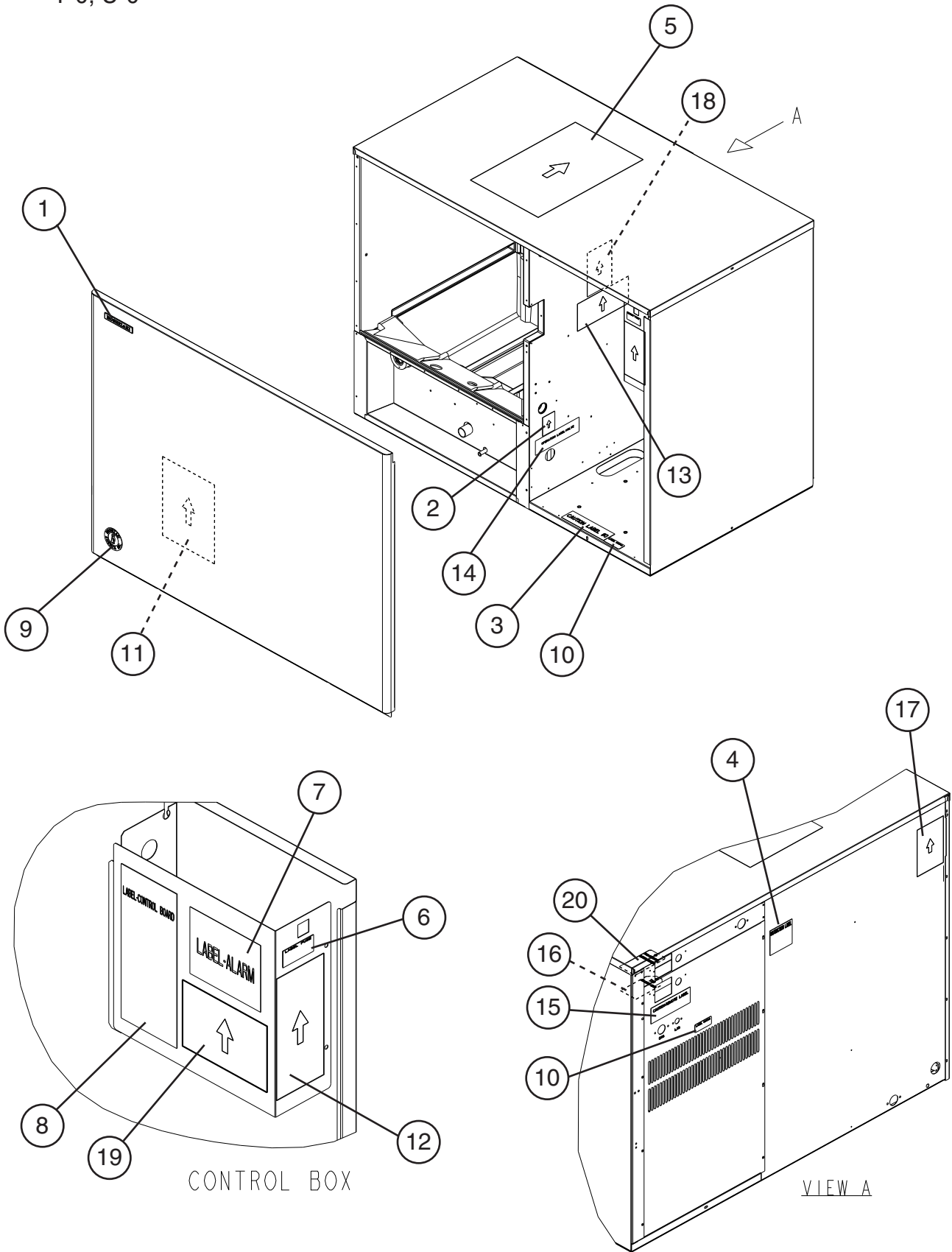
Title: G. Label Location Model: KM-1900SAH/3												
Index No.	Description	Material or Model Number	Part Number	Required Number								
				T-0	U-0							
1	Emblem	-	4A0560-01	1								
2	Caution Label (F)	-	439146-01	1								
3	Caution Label (K)	-	439150-01	1								
4	Instruction Label	-	444575-01	1								
5	Instruction Sheet	-	2A4709-01	1								
6	Label-Fuse	-	4A2817-01	1								
7	Label-Air Filter	-	426177-01	1								
8	Label-Alarm	-	4A3517-01	1								
9	Label-Control Board	-	3A2220-01	1								
10	Label-Penguin-HA-R	-	4A0526-01	1								
11	Label-R404A	-	4A0960-01	1								
12	Maintenance Label	-	3A3922-01	1								
13	Manual Label	-	324476-01	1								
14	Manual Label-Bin Control	-	3A4844-01	1								
15	Operation Label-Valve	-	439541-01	1								
16	Process Valve Label	-	4A3943-01	1								
17	Nameplate	KM-1900SAH	2A4739-01	1								
		KM-1900SAH3	2A4739-02	1								
18	Rating Label	KM-1900SAH	2A4740-01	1								
		KM-1900SAH3	2A4740-02	1								
19	Tag-Warning: Electrical Connection	KM-1900SAH	428430-01	1								
		KM-1900SAH3	438479-01	1								
20	Wiring Label	KM-1900SAH	3A4977-01	1								
		KM-1900SAH3	3A4979-01	1								

G. Label Location
KM-1900SWH/3
 T-0, U-0



Title: G. Label Location Model: KM-1900SWH/3												
Index No.	Description	Material or Model Number	Part Number	Required Number								
				T-0	U-0							
1	Emblem	-	4A0560-01	1								
2	Process Valve Label	-	4A3943-01	1								
3	Caution Label (K)	-	439150-01	1								
4	Instruction Label	-	444575-01	1								
5	Instruction Sheet	-	2A4709-01	1								
6	Label-Fuse	-	4A2817-01	1								
7	Label-Alarm	-	4A3517-01	1								
8	Label-Control Board	-	3A2220-01	1								
9	Label-Penguin-HA-R	-	4A0526-01	1								
10	Label-R404A	-	4A0960-01	1								
11	Maintenance Label	-	3A3922-01	1								
12	Manual Label	-	324476-01	1								
13	Manual Label-Bin Control	-	3A4844-01	1								
14	Operation Label-Valve	-	439541-01	1								
15	Nameplate	KM-1900SWH	2A4739-03	1								
		KM-1900SWH3	2A4739-04	1								
16	Rating Label	KM-1900SWH	2A4740-03	1								
		KM-1900SWH3	2A4740-04	1								
17	Wiring Label	KM-1900SWH	3A4981-01	1								
		KM-1900SWH3	3A4983-01	1								
18	Tag-Warning: Electrical Connection	KM-1900SWH	428430-01	1								
		KM-1900SWH3	438479-01	1								

G. Label Location
KM-1900SRH/3
 T-0, U-0

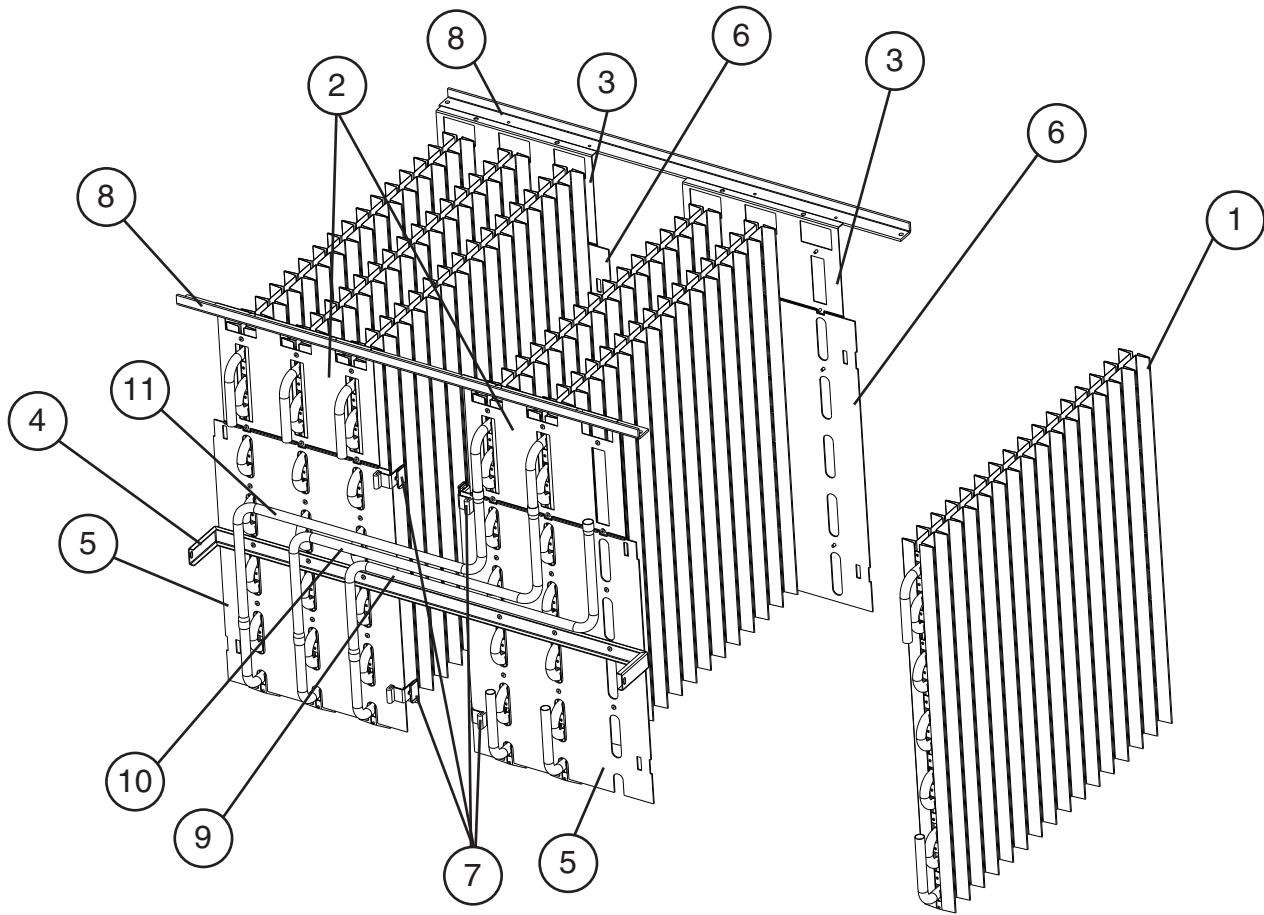


Title: G. Label Location Model: KM-1900SRH/3												
Index No.	Description	Material or Model Number	Part Number	Required Number								
				T-0	U-0							
1	Emblem	-	4A0560-01	1								
2	Process Valve Label	-	4A3943-01	1								
3	Caution Label (K)	-	439150-01	1								
4	Instruction Label	-	444575-01	1								
5	Instruction Sheet	-	2A4709-01	1								
6	Label-Fuse	-	4A2817-01	1								
7	Label-Alarm	-	4A3517-01	1								
8	Label-Control Board	-	3A2220-01	1								
9	Label-Penguin-HA-R	-	4A0526-01	1								
10	Label-R404A	-	4A0960-01	2								
11	Maintenance Label	-	3A3922-01	1								
12	Manual Label	-	324476-01	1								
13	Manual Label-Bin Control	-	3A4844-01	1								
14	Operation Label-Valve	-	439541-01	1								
15	Caution-Remote Label	-	4A1491-01	1								
16	Tag Fan Motor Leads	-	4A1494-01	1								
17	Nameplate	KM-1900SRH	2A4739-05	1								
		KM-1900SRH3	2A4739-06	1								
18	Rating Label	KM-1900SRH	2A4740-05	1								
		KM-1900SRH3	2A4740-06	1								
19	Wiring Label	KM-1900SRH	3A4981-01	1								
		KM-1900SRH3	3A4983-01	1								
20	Tag-Warning: Electrical Connection	KM-1900SRH	428430-01	1								
		KM-1900SRH3	438479-01	1								

H. Evaporator Assembly

KM-1900SAH/3, KM-1900SWH/3, KM-1900SRH/3

T-0, U-0

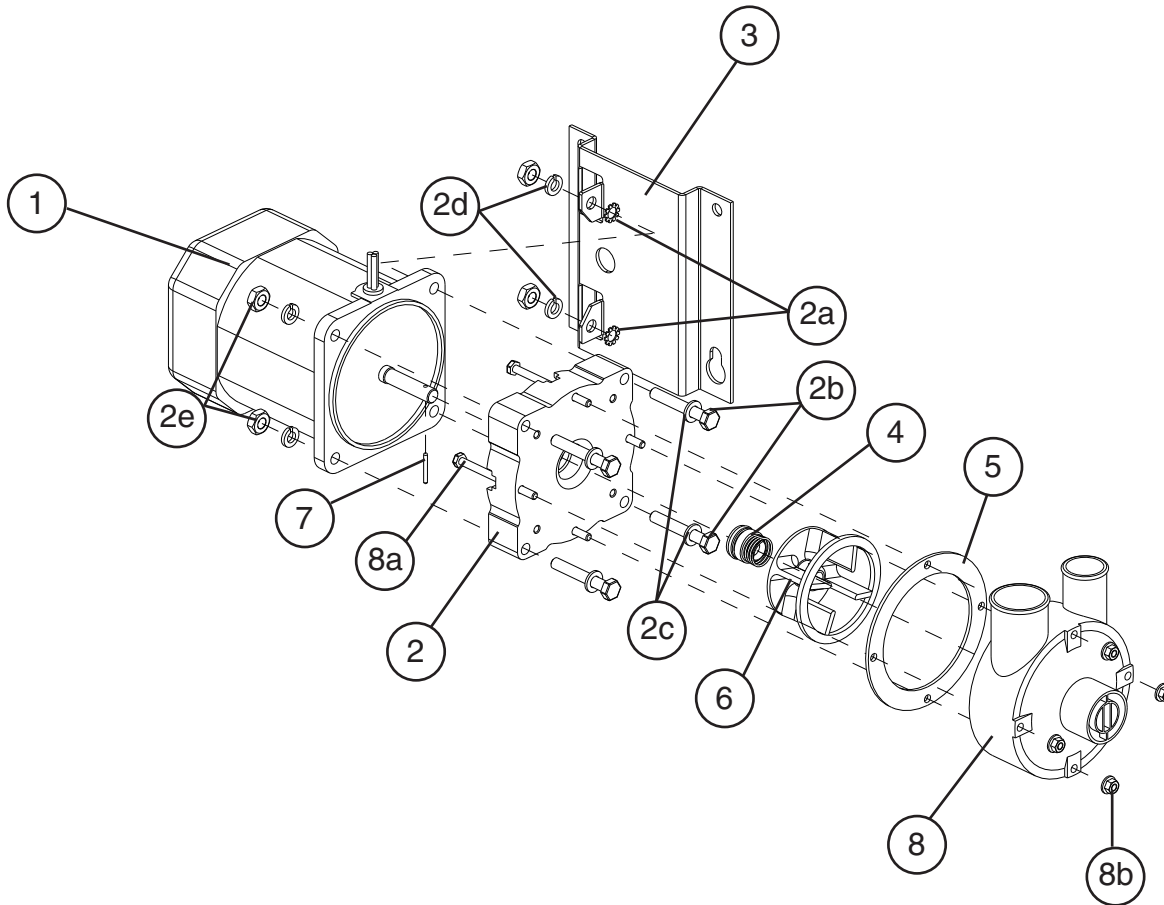


Title: H. Evaporator Assembly Model: KM-1900SAH/3, KM-1900SWH/3, KM-1900SRH/3																	
Index No.	Description	Material or Model Number	Part Number	Required Number													
				T-0	U-0												
1	Evaporator	S-0641	103317G02	6													
2	Evaporator Bracket (A)	SS	323690-01	2													
3	Evaporator Bracket (B)	SS	323691-01	2													
4	Evaporator Bracket (C)	SS	325868-01	1													
5	End Plate (A)	ABS	325859-01	2													
6	End Plate (B)	ABS	325860-01	2													
7	Hook	-	324152-01	8													
8	Evaporator Bracket	-	436582-01	2													
9	Copper Tube (A)	-	439082-01	1													
10	Copper Tube (B)	-	439082-02	1													
11	Copper Tube (C)	-	439082-03	1													

J. Pump Motor Assembly

KM-1900SAH/3, KM-1900SWH/3, KM-1900SRH/3

T-0, U-0



Title: J. Pump Motor Assembly Model: KM-1900SAH/3, KM-1900SWH/3, KM-1900SRH/3					Required Number						
Index No.	Description	Material or Model Number	Part Number	T-0							
				U-0							
1	Pump Motor	M91A60SP201	2U0106-01	1							
2	Pump Flange	-	215662-01	1							
2a	Tooth Washer	M6, SS	7R22-0600	2							
2b	Hex Head Bolt	6x40, SS	7B02-0640	4							
2c	Flat Washer	M6, SS	7W22-0600	4							
2d	Split Lock Washer	M6, SS	7L22-0600	4							
2e	Hex Nut	M6, SS	7N12-0600	4							
3	Pump Motor Bracket	SS	323904-01	1							
4	Mechanical Seal	-	4A3820-01	1							
5	Packing	-	428547-01	1							
6	Impeller	ABS White	436584-01	1							
7	Pin	-	4A0648-01	1							
8	Pump Housing	ABS White	213687-01	1							
8a	Hex Head Bolt	4x55, SS	7B02-0455	4							
8b	Hex Flange Nut	4, SS	7J02-0400	4							

K. Accessories & Packaging

KM-1900SAH/3, KM-1900SWH/3, KM-1900SRH/3

T-0, U-0

Title: K. Accessories & Packaging Model: KM-1900SAH/3, KM-1900SWH/3, KM-1900SRH/3												
Index No.	Description	Material or Model Number	Part Number	Required Number								
				T-0	U-0							
1	Instruction Manual	-	91A1SJ10A	1								
2	Universal Brace	-	4A0363-01	2								
3	Hex Bolt	5x12, SS	7B02-0512	4								
4	T2 Screw	4x16, SS	7P32-0416	2								
	Packaging	-	2A0876A09									