

Hoshizaki America, Inc.

Stackable Crescent Cuber

Models

KM-130 ISAH/3

KM-130 ISWH/3

KM-130 ISRH/3



“A Superior Degree
of Reliability”

www.hoshizaki.com

PARTS LIST



Number: 71290
Issued: 11-25-2008
Revised: 8-5-2009

CONTENTS

| | |
|---|----|
| Auxiliary Codes..... | 3 |
| Note About Ordering Parts | 3 |
| Material Abbreviations | 4 |
| A. Ice Cuber Assembly | 5 |
| KM-1301SAH/3 | 5 |
| KM-1301SWH/3 | 7 |
| KM-1301SRH/3 | 9 |
| B. Refrigeration Circuit | 11 |
| KM-1301SAH/3 | 11 |
| KM-1301SWH/3 | 15 |
| KM-1301SRH/3 | 19 |
| C. Water Circuit | 23 |
| D. Control Box Assembly..... | 26 |
| KM-1301SAH, KM-1301SWH, KM-1301SRH | 26 |
| KM-1301SAH3, KM-1301SWH3, KM-1301SRH3 | 28 |
| E. Transformer Box Assembly..... | 30 |
| KM-1301SAH3, KM-1301SWH3, KM-1301SRH3 | 30 |
| F. Label Location | 31 |
| KM-1301SAH/3 | 31 |
| KM-1301SWH/3 | 33 |
| KM-1301SRH/3 | 35 |
| G. Evaporator Assembly..... | 37 |
| H. Pump Motor Assembly | 38 |
| J. Accessories & Packaging | 39 |

Auxiliary Codes

| | | |
|--------------------|-----|----------------|
| KM-1301SAH | T-0 | October 2008 |
| | U-0 | January 2009 |
| | U-1 | September 2009 |
| KM-1301SAH3 | T-0 | October 2008 |
| | U-0 | February 2009 |
| | U-1 | September 2009 |
| KM-1301SWH | T-0 | September 2008 |
| | U-0 | March 2009 |
| | U-1 | September 2009 |
| KM-1301SWH3 | T-0 | September 2008 |
| | U-0 | April 2009 |
| | U-1 | September 2009 |
| KM-1301SRH | T-0 | October 2008 |
| | U-0 | January 2009 |
| | U-1 | September 2009 |
| KM-1301SRH3 | T-0 | October 2008 |
| | U-0 | January 2009 |
| | U-1 | September 2009 |

Auxiliary Code Breakdown

The auxiliary code is the first two characters in the serial number. The first character indicates the year. Years progress or regress in alphabetical order. The series runs from "A" through "V" and the letters "I" and "O" are skipped. The second character indicates significant part changes within a year. Base is "0" and this number advances for each change.

Note About Ordering Parts

Most assemblies cannot be ordered as complete units; parts in the assemblies generally must be ordered separately.

Material Abbreviations

ALUMINUM

AL = Aluminum

COPPER

CU = Copper

PLASTIC

ABS = Acrylonitrile -butadiene - styrene
AC = Polyacetal
EVA = Ethylene vinyl acetate
PA = Polyamide = Nylon
PC = Polycarbonate
PE = Polyethylene
PES = Polyester
PETP = Polyethylene terephthalate = Tetlon
PP = Polypropylene
PS = Polystyrene
PTFE = Polytetrafluoroethylene = Teflon
PUR = Polyurethane
PVC = Polyvinyl chloride

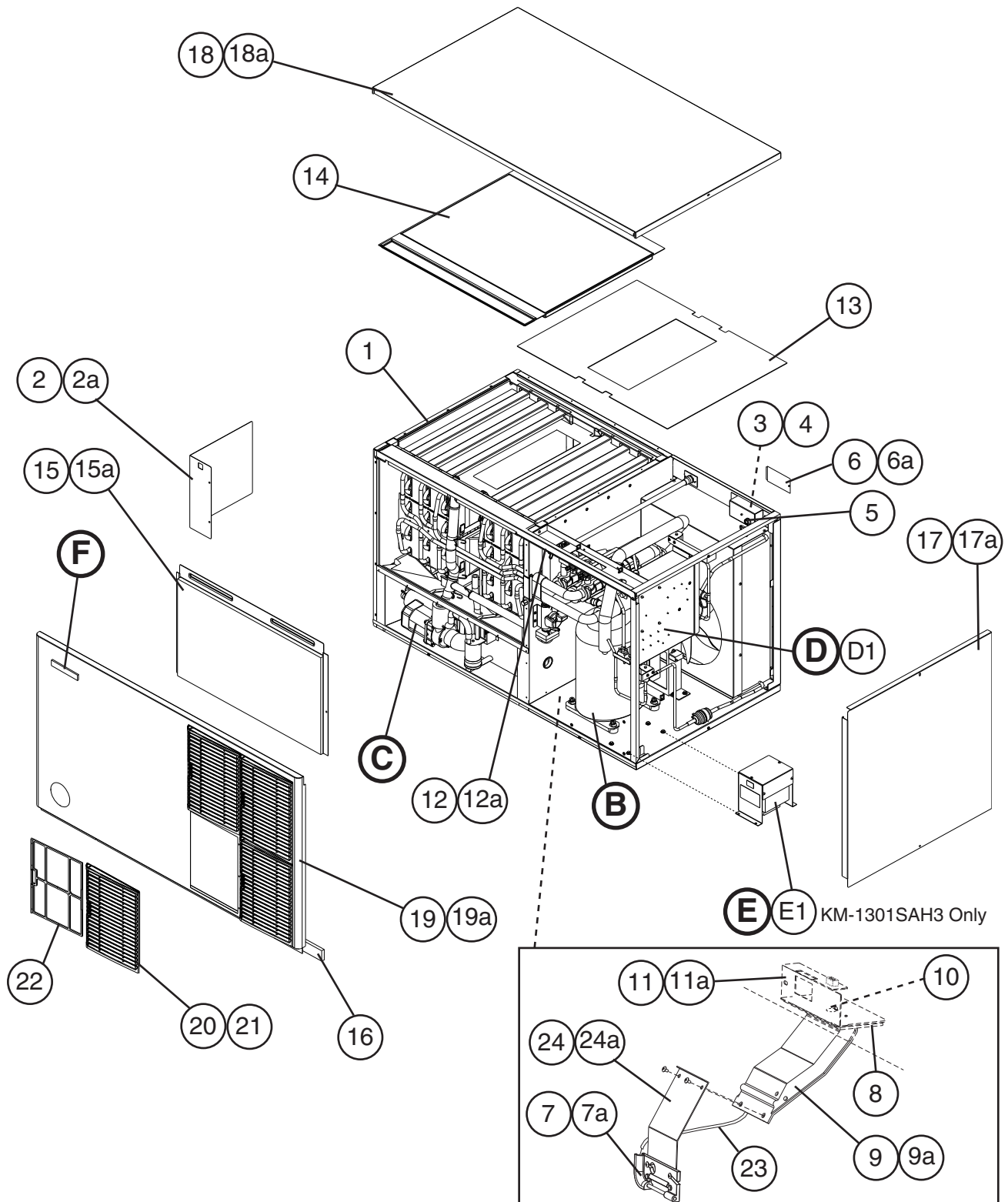
RUBBER

VN = Vinyl Nitrile
EPDM = EP rubber
NBR = Nitrile butadiene rubber
NR = Natural rubber
NP = Neoprene
SI.R = Silicone rubber
SY.R = Synthetic rubber
EPH = Epichlorohydrin

STEEL

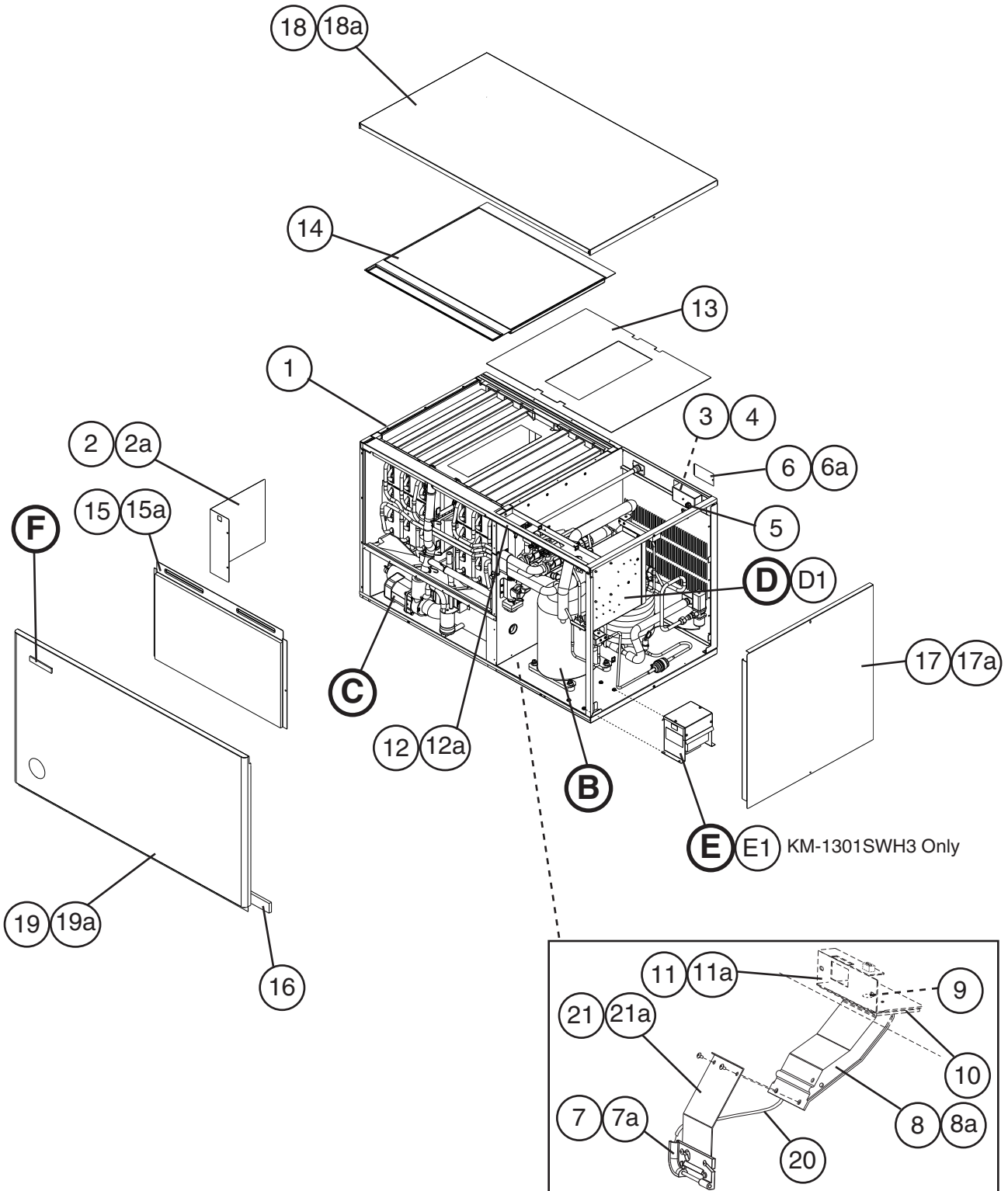
GS = Galvanized steel
SS = Stainless steel
PS = Plated steel
PAS = Primed steel

A. Ice Cuber Assembly
KM-1301SAH/3
 T-0 to U-1



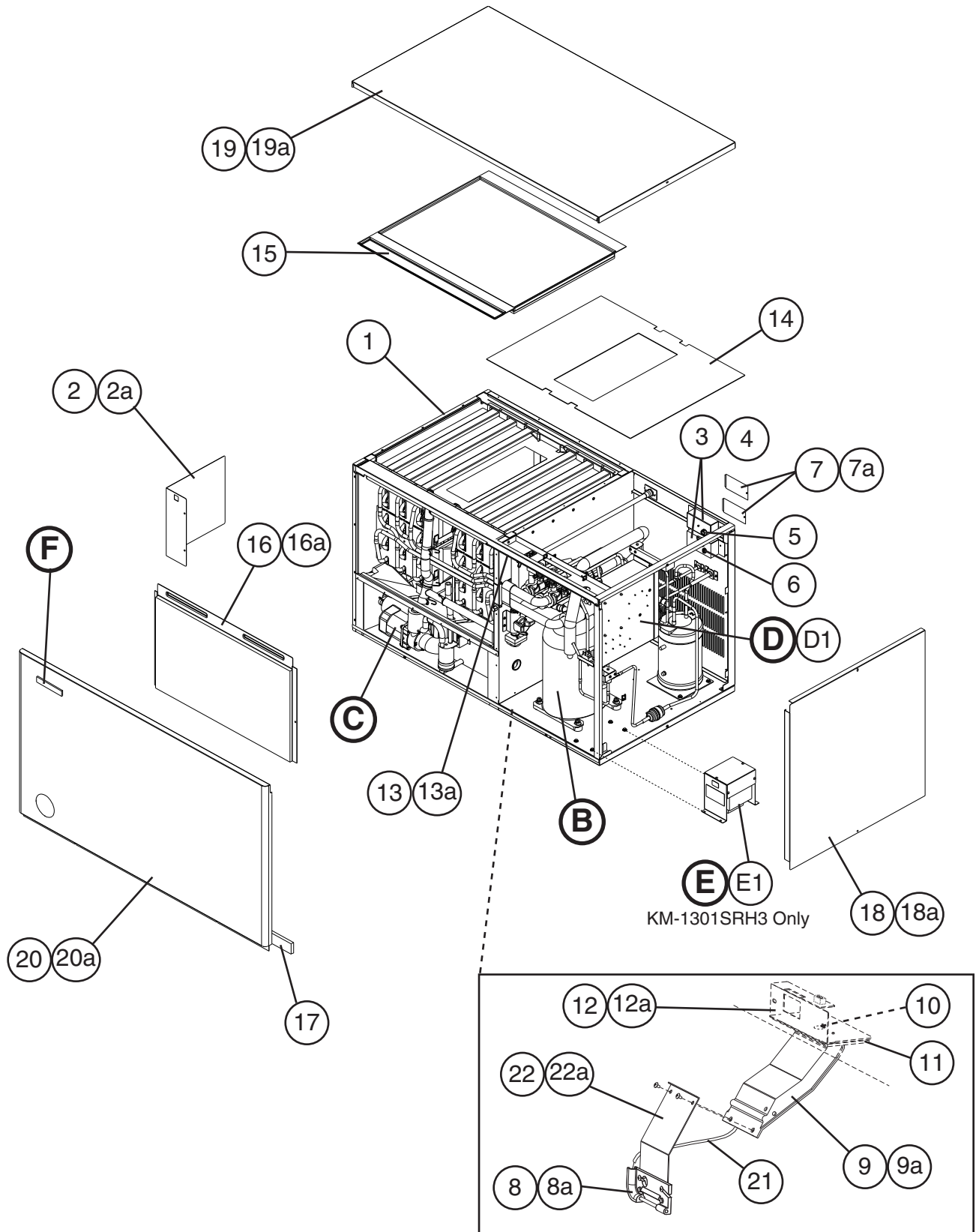
| Title: A. Ice Cuber Assembly Model: KM-1301SAH/3 | | | | | | | | | | | | |
|--|------------------------------|--------------------------|-------------|-----------------|-----|--|--|--|--|--|--|--|
| Index No. | Description | Material or Model Number | Part Number | Required Number | | | | | | | | |
| | | | | T-0 | U-0 | | | | | | | |
| B | Refrigeration Circuit | KM-1301SAH | 1A1608A01 | 1 | 1 | | | | | | | |
| | | KM-1301SAH3 | 1A1608A02 | 1 | 1 | | | | | | | |
| C | Water Circuit | - | 1A1424A02 | 1 | 1 | | | | | | | |
| D | Control Box Assembly | KM-1301SAH | 2A4746A01 | 1 | - | | | | | | | |
| | | | 2A4746A03 | | 1 | | | | | | | |
| | | KM-1301SAH3 | 2A4747A01 | 1 | - | | | | | | | |
| | | | 2A4747A04 | | 1 | | | | | | | |
| D1 | T2 Screw | 4x8 | 7P31-0408 | 3 | 3 | | | | | | | |
| E | Transformer Box Assembly | KM-1301SAH3 | 3A1102A01 | 1 | 1 | | | | | | | |
| E1 | Hex Head Bolt w/Washer (LF) | 5x10 | 7B0230510 | 4 | 4 | | | | | | | |
| F | Label Location | KM-1301SAH | 2A4721A01 | 1 | - | | | | | | | |
| | | | 2A4721A03 | | 1 | | | | | | | |
| | | KM-1301SAH3 | 2A4721A02 | 1 | - | | | | | | | |
| | | | 2A4721A04 | | 1 | | | | | | | |
| 1 | Evaporator Case | - | 1A0603G01 | 1 | 1 | | | | | | | |
| 2 | Control Box Cover | - | 3A2386-01 | 1 | 1 | | | | | | | |
| 2a | T2 Screw | 4x8 | 7P31-0408 | 3 | 3 | | | | | | | |
| 3 | Square Washer | Brass | 433537-02 | 1 | 1 | | | | | | | |
| 4 | Screw-Grounding | - | 433304-02 | 1 | 1 | | | | | | | |
| 5 | Bushing | SR-34-2 | 420472-05 | 1 | 1 | | | | | | | |
| 6 | Junction Box Cover | - | 433410-01 | 1 | 1 | | | | | | | |
| 6a | T2 Screw | 4x8 | 7P31-0408 | 1 | 1 | | | | | | | |
| 7 | Bulb Holder | - | 3A3903-01 | 1 | 1 | | | | | | | |
| 7a | Truss Head Screw | 4x10, SS | 7C32-0410 | 2 | 2 | | | | | | | |
| 8 | Spacer | ABS | 439727-01 | 1 | 1 | | | | | | | |
| 9 | Bulb Holder (C) | | 216340G01 | 1 | 1 | | | | | | | |
| 9a | Truss Head Screw | 4x12, SS | 7C32-0412 | 2 | 2 | | | | | | | |
| 10 | Capillary Ring | - | 425307-01 | 1 | 1 | | | | | | | |
| 11 | Bulb Holder (D) | - | 328742-01 | 1 | 1 | | | | | | | |
| 11a | Thumbscrew | Black | 415949G12 | 2 | 2 | | | | | | | |
| 12 | Front Panel Bracket | | 323903-01 | 1 | 1 | | | | | | | |
| 12a | T2 Screw | 4x12, SS | 7P32-0412 | 2 | 2 | | | | | | | |
| 13 | Spacer | ABS | 324321-01 | 1 | 1 | | | | | | | |
| 14 | Top Insulation | - | 324216G01 | 1 | 1 | | | | | | | |
| 15 | Front Insulation | - | 324215G01 | 1 | 1 | | | | | | | |
| 15a | Thumbscrew | Black | 415949G12 | 1 | 1 | | | | | | | |
| 16 | Gasket | L=1219 | 4A0808L02 | 1 | 1 | | | | | | | |
| 17 | Side Panel (R) | - | 2A2226G01 | 1 | 1 | | | | | | | |
| 17a | Truss Head Screw | 4x8, SS | 7C32-0408 | 1 | 1 | | | | | | | |
| 18 | Top Panel | - | 2A2255-01 | 1 | 1 | | | | | | | |
| 18a | Truss Head Screw | 4x8, SS | 7C32-0408 | 2 | 2 | | | | | | | |
| 19 | Front Panel | - | 2A2224-02 | 1 | 1 | | | | | | | |
| 19a | Truss Head Screw | 4x16, SS | 7C32-0416 | 2 | 2 | | | | | | | |
| 20 | Louver (B) | - | 1A0548-01 | 4 | 4 | | | | | | | |
| 21 | Push Retainer | - | 4A2414-01 | 12 | 12 | | | | | | | |
| 22 | Air Filter (B) | - | 2A2063G01 | 4 | 4 | | | | | | | |
| 23 | Silicone Hose | L=285 | 773013812 | 1 | 1 | | | | | | | |
| 24 | Thermostat Extension Bracket | - | 3A0408-01 | 1 | 1 | | | | | | | |
| 24a | T2 Screw | 4x12, SS | 7P32-0412 | 2 | 2 | | | | | | | |

A. Ice Cuber Assembly
KM-1301SWH/3
 T-0 to U-1



| Title: A. Ice Cuber Assembly Model: KM-1301SWH/3 | | | | | | | | | | | | | |
|--|------------------------------|--------------------------|-------------|-----------------|-----|--|--|--|--|--|--|--|--|
| Index No. | Description | Material or Model Number | Part Number | Required Number | | | | | | | | | |
| | | | | T-0 U-0 | U-1 | | | | | | | | |
| B | Refrigeration Circuit | KM-1301SWH | 1A1609A01 | 1 | 1 | | | | | | | | |
| | | KM-1301SWH3 | 1A1609A02 | 1 | 1 | | | | | | | | |
| C | Water Circuit | - | 1A1424A02 | 1 | 1 | | | | | | | | |
| D | Control Box Assembly | KM-1301SWH | 2A4746A02 | 1 | - | | | | | | | | |
| | | | 2A4746A04 | | 1 | | | | | | | | |
| | | KM-1301SWH3 | 2A4747A01 | 1 | - | | | | | | | | |
| | | | 2A4747A04 | | 1 | | | | | | | | |
| D1 | T2 Screw | 4x8 | 7P31-0408 | 3 | 3 | | | | | | | | |
| E | Transformer Box Assembly | KM-1301SWH3 | 3A1102A01 | 1 | 1 | | | | | | | | |
| E1 | Hex Head Bolt w/Washer (LF) | 5x10 | 7B0230510 | 4 | 4 | | | | | | | | |
| F | Label Location | KM-1301SWH | 2A4722A01 | 1 | - | | | | | | | | |
| | | | 2A4722A03 | | 1 | | | | | | | | |
| | | KM-1301SWH3 | 2A4722A02 | 1 | - | | | | | | | | |
| | | | 2A4722A04 | | 1 | | | | | | | | |
| 1 | Evaporator Case | - | 1A0603G09 | 1 | 1 | | | | | | | | |
| 2 | Control Box Cover | - | 3A2386-01 | 1 | 1 | | | | | | | | |
| 2a | T2 Screw | 4x8 | 7P31-0408 | 3 | 3 | | | | | | | | |
| 3 | Square Washer | Brass | 433537-02 | 1 | 1 | | | | | | | | |
| 4 | Screw-Grounding | - | 433304-02 | 1 | 1 | | | | | | | | |
| 5 | Bushing | SR-34-2 | 420472-05 | 1 | 1 | | | | | | | | |
| 6 | Junction Box Cover | - | 433410-01 | 1 | 1 | | | | | | | | |
| 6a | T2 Screw | 4x8 | 7P31-0408 | 1 | 1 | | | | | | | | |
| 7 | Bulb Holder | - | 3A3903-01 | 1 | 1 | | | | | | | | |
| 7a | Truss Head Screw | 4x10, SS | 7C32-0410 | 2 | 2 | | | | | | | | |
| 8 | Bulb Holder (C) | - | 216340G01 | 1 | 1 | | | | | | | | |
| 8a | Truss Head Screw | 4x12, SS | 7C32-0412 | 2 | 2 | | | | | | | | |
| 9 | Capillary Ring | - | 425307-01 | 1 | 1 | | | | | | | | |
| 10 | Spacer | ABS | 439727-01 | 1 | 1 | | | | | | | | |
| 11 | Bulb Holder (D) | - | 328742-01 | 1 | 1 | | | | | | | | |
| 11a | Thumbscrew | Black | 415949G12 | 2 | 2 | | | | | | | | |
| 12 | Front Panel Bracket | SS | 323903-01 | 1 | 1 | | | | | | | | |
| 12a | T2 Screw | 4x12, SS | 7P32-0412 | 2 | 2 | | | | | | | | |
| 13 | Spacer | ABS | 324321-01 | 1 | 1 | | | | | | | | |
| 14 | Top Insulation | - | 324216G01 | 1 | 1 | | | | | | | | |
| 15 | Front Insulation | - | 324215G01 | 1 | 1 | | | | | | | | |
| 15a | Thumbscrew | Black | 415949G12 | 1 | 1 | | | | | | | | |
| 16 | Gasket | L=1219 | 4A0808L02 | 1 | 1 | | | | | | | | |
| 17 | Side Panel (R) | SS | 2A2226G01 | 1 | 1 | | | | | | | | |
| 17a | Truss Head Screw | 4x8, SS | 7C32-0408 | 1 | 1 | | | | | | | | |
| 18 | Top Panel | SS | 2A2255-01 | 1 | 1 | | | | | | | | |
| 18a | Truss Head Screw | 4x8, SS | 7C32-0408 | 2 | 2 | | | | | | | | |
| 19 | Front Panel | SS | 2A2224-01 | 1 | 1 | | | | | | | | |
| 19a | Truss Head Screw | 4x16, SS | 7C32-0416 | 2 | 2 | | | | | | | | |
| 20 | Silicone Hose | L=285 | 7730I3812 | 1 | 1 | | | | | | | | |
| 21 | Thermostat Extension Bracket | SS | 3A0408-01 | 1 | 1 | | | | | | | | |
| 21a | T2 Screw | 4x12, SS | 7P32-0412 | 2 | 2 | | | | | | | | |

A. Ice Cuber Assembly
KM-1301SRH/3
 T-0 to U-1



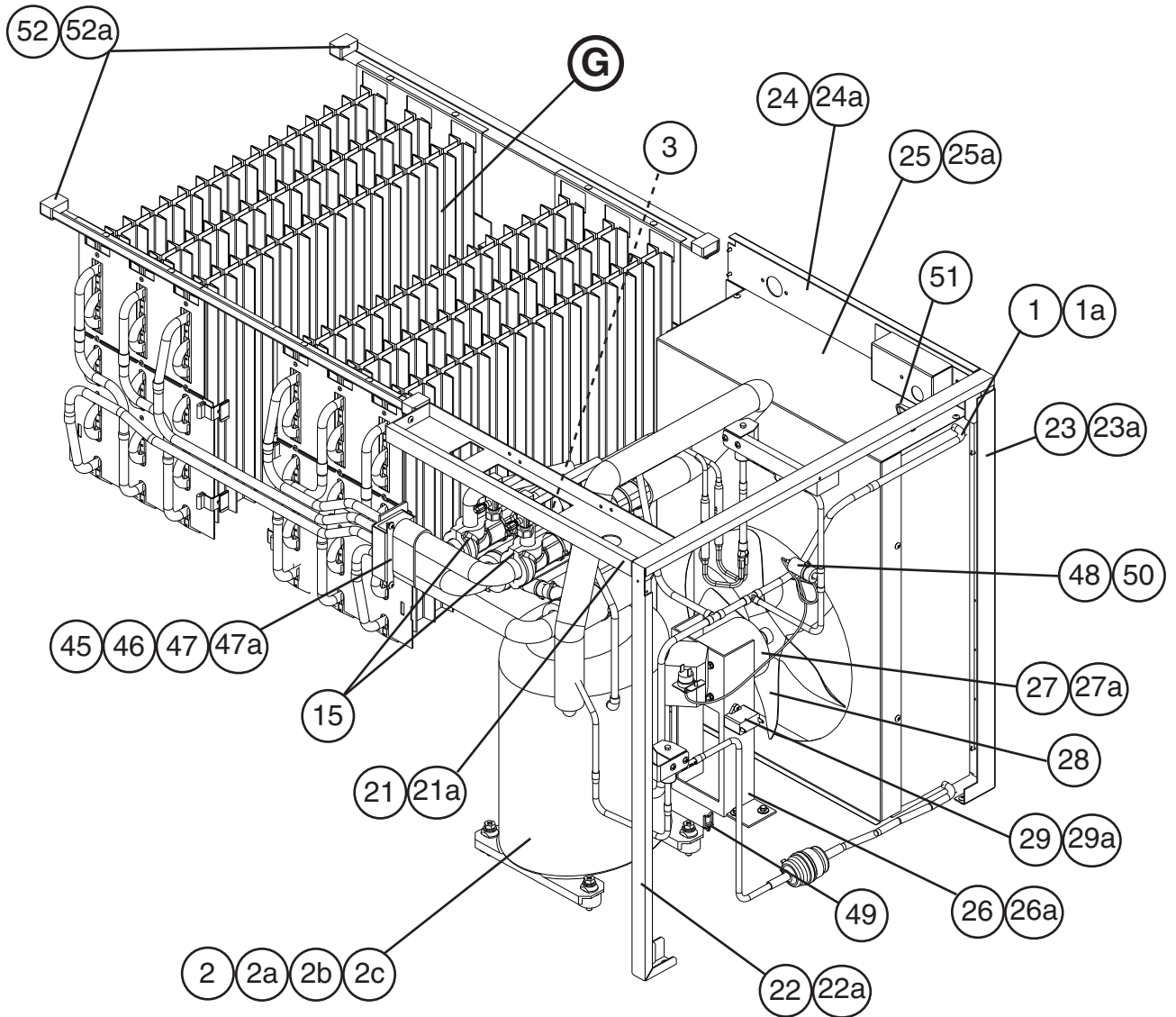
| Title: A. Ice Cuber Assembly Model: KM-1301SRH/3 | | | | | | | | | | | | | |
|--|------------------------------|--------------------------|-------------|-----------------|-----|-----|--|--|--|--|--|--|--|
| Index No. | Description | Material or Model Number | Part Number | Required Number | | | | | | | | | |
| | | | | T-0 | U-0 | U-1 | | | | | | | |
| B | Refrigeration Circuit | KM-1301SRH | 1A1610A01 | 1 | 1 | | | | | | | | |
| | | KM-1301SRH3 | 1A1610A02 | 1 | 1 | | | | | | | | |
| C | Water Circuit | - | 1A1424A02 | 1 | 1 | | | | | | | | |
| D | Control Box Assembly | KM-1301SRH | 2A4746A02 | 1 | - | | | | | | | | |
| | | | 2A4746A04 | | 1 | | | | | | | | |
| | | KM-1301SRH3 | 2A4747A01 | 1 | - | | | | | | | | |
| | | | 2A4747A03 | | 1 | | | | | | | | |
| D1 | T2 Screw | 4x8 | 7P31-0408 | 3 | 3 | | | | | | | | |
| E | Transformer Box Assembly | KM-1301SRH3 | 3A1102A01 | 1 | 1 | | | | | | | | |
| E1 | Hex Head Bolt w/Washer (LF) | 5x10 | 7B0230510 | 4 | 4 | | | | | | | | |
| F | Label Location | KM-1301SRH | 2A4723A01 | 1 | - | | | | | | | | |
| | | | 2A4723A03 | | 1 | | | | | | | | |
| | | KM-1301SRH3 | 2A4723A02 | 1 | - | | | | | | | | |
| | | | 2A4723A04 | | 1 | | | | | | | | |
| 1 | Evaporator Case | - | 1A0603G03 | 1 | 1 | | | | | | | | |
| 2 | Control Box Cover | - | 3A2386-01 | 1 | 1 | | | | | | | | |
| 2a | T2 Screw | 4x8 | 7P31-0408 | 3 | 3 | | | | | | | | |
| 3 | Square Washer | Brass | 433537-02 | 2 | 2 | | | | | | | | |
| 4 | Screw-Grounding | - | 433304-02 | 2 | 2 | | | | | | | | |
| 5 | Bushing | SR-34-2 | 420472-05 | 1 | 1 | | | | | | | | |
| 6 | Bushing | SR-30-1 | 420472-03 | 1 | 1 | | | | | | | | |
| 7 | Junction Box Cover | - | 433410-01 | 2 | 2 | | | | | | | | |
| 7a | T2 Screw | 4x8 | 7P31-0408 | 2 | 2 | | | | | | | | |
| 8 | Bulb Holder | - | 3A3903-01 | 1 | 1 | | | | | | | | |
| 8a | Truss Head Screw | 4x10, SS | 7C32-0410 | 2 | 2 | | | | | | | | |
| 9 | Bulb Holder (C) | - | 216340G01 | 1 | 1 | | | | | | | | |
| 9a | Truss Head Screw | 4x12, SS | 7C32-0412 | 2 | 2 | | | | | | | | |
| 10 | Capillary Ring | - | 425307-01 | 1 | 1 | | | | | | | | |
| 11 | Spacer | ABS | 439727-01 | 1 | 1 | | | | | | | | |
| 12 | Bulb Holder (D) | - | 328742-01 | 1 | 1 | | | | | | | | |
| 12a | Thumbscrew | Black | 415949G12 | 2 | 2 | | | | | | | | |
| 13 | Front Panel Bracket | SS | 323903-01 | 1 | 1 | | | | | | | | |
| 13a | T2 Screw | 4x12, SS | 7P32-0412 | 2 | 2 | | | | | | | | |
| 14 | Spacer | ABS | 324321-01 | 1 | 1 | | | | | | | | |
| 15 | Top Insulation | - | 324216G01 | 1 | 1 | | | | | | | | |
| 16 | Front Insulation | - | 324215G01 | 1 | 1 | | | | | | | | |
| 16a | Thumbscrew | Black | 415949G12 | 1 | 1 | | | | | | | | |
| 17 | Gasket | L=1219 | 4A0808L02 | 1 | 1 | | | | | | | | |
| 18 | Side Panel (R) | SS | 2A2226G01 | 1 | 1 | | | | | | | | |
| 18a | Truss Head Screw | 4x8, SS | 7C32-0408 | 1 | 1 | | | | | | | | |
| 19 | Top Panel | SS | 2A2255-01 | 1 | 1 | | | | | | | | |
| 19a | Truss Head Screw | 4x8, SS | 7C32-0408 | 2 | 2 | | | | | | | | |
| 20 | Front Panel | SS | 2A2224-01 | 1 | 1 | | | | | | | | |
| 20a | Truss Head Screw | 4x16, SS | 7C32-0416 | 2 | 2 | | | | | | | | |
| 21 | Silicone Hose | L=285 | 7730I3812 | 1 | 1 | | | | | | | | |
| 22 | Thermostat Extension Bracket | - | 3A0408-01 | 1 | 1 | | | | | | | | |
| 22a | T2 Screw | 4x12, SS | 7P32-0412 | 2 | 2 | | | | | | | | |

B. Refrigeration Circuit

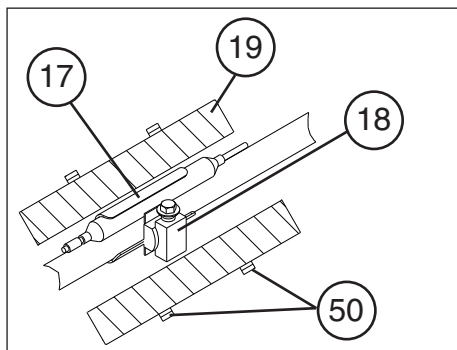
1/2

KM-1301SAH/3

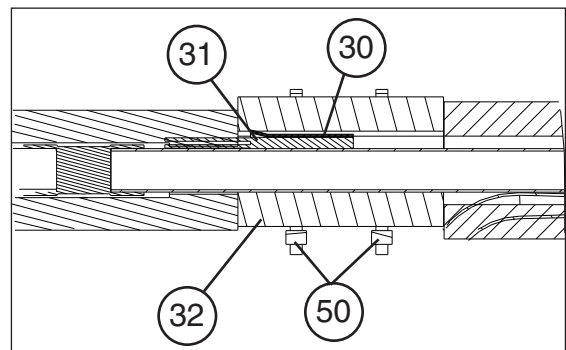
T-0 to U-1



Detailed TXV Bulb Attachment



Detailed Thermistor Attachment

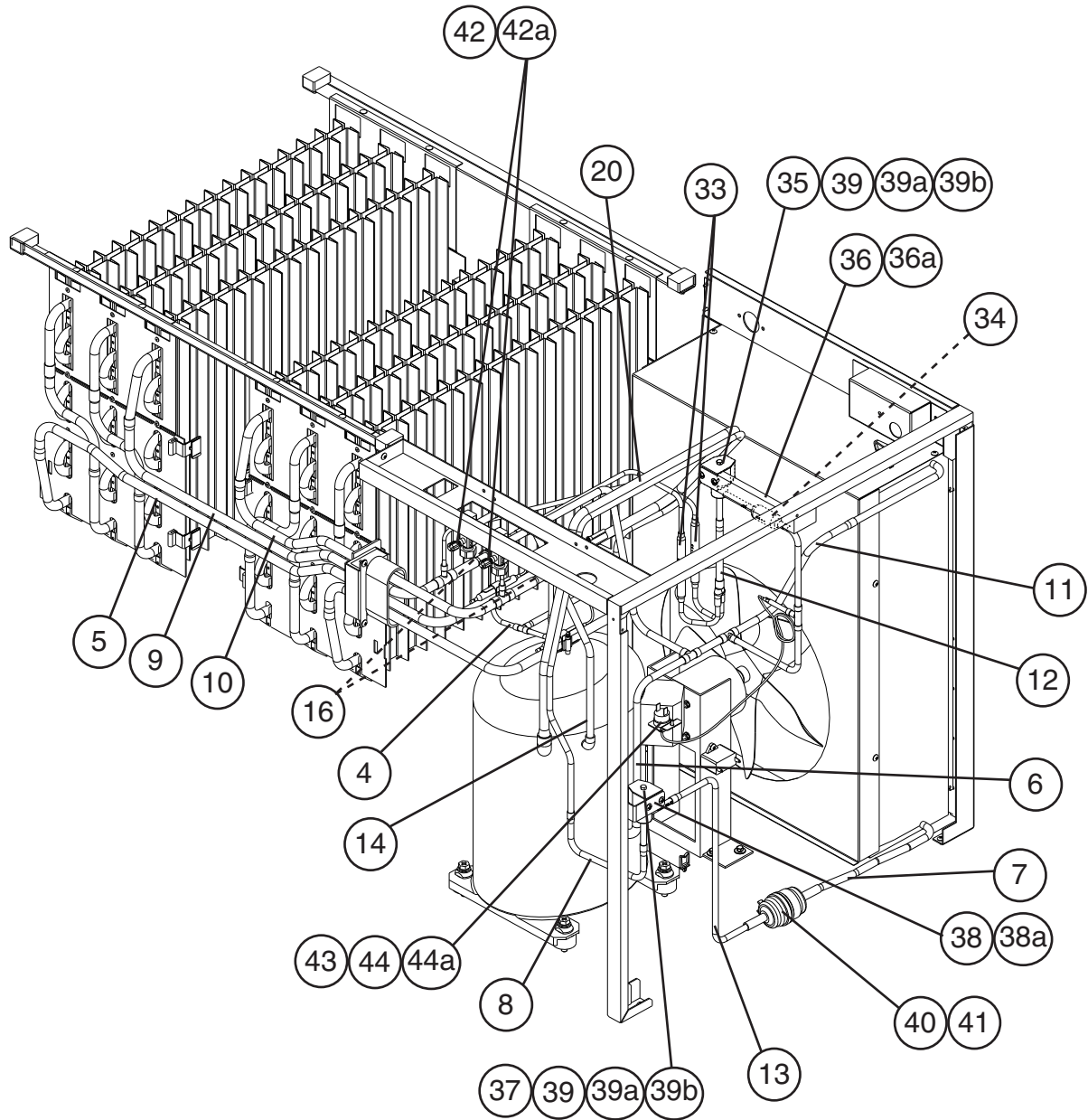


B. Refrigeration Circuit

2/2

KM-1301SAH/3

T-0 to U-1



| Title: B. Refrigeration Circuit Model: KM-1301SAH/3 | | | | | | | | | | | | |
|---|---------------------------------|---------------------------------------|-------------|-----------------|--|--|--|--|--|--|--|--|
| Index No. | Description | Material or Model Number | Part Number | Required Number | | | | | | | | |
| | | | | T-0 to U-1 | | | | | | | | |
| G | Evaporator Assembly | - | 104696G03 | 1 | | | | | | | | |
| 1 | Condenser | - | 213621-01 | 1 | | | | | | | | |
| 1a | T2 Screw | 4x8 | 7P31-0408 | 2 | | | | | | | | |
| 2 | Compressor | KM-1301SAH CS14K6E-PFV-237 | 4A1412-01 | 1 | | | | | | | | |
| | | KM-1301SAH3 CS14K6E-TF5-237 | 4A1484-01 | 1 | | | | | | | | |
| 2a | Spacer | - | 434921-01 | 4 | | | | | | | | |
| 2b | Grommet | - | 434922-01 | 4 | | | | | | | | |
| 2c | Bolt Assembly | 8x45 | 437889-01 | 4 | | | | | | | | |
| 3 | Connection Tee Cover | - | 4A1379-01 | 1 | | | | | | | | |
| 4 | Copper Tube (A)-Expansion Valve | - | 3A5061G01 | 1 | | | | | | | | |
| 5 | Copper Tube (A)-Low Side | - | 3A5052G01 | 1 | | | | | | | | |
| 6 | Copper Tube (B)-High Side | - | 2A4826G01 | 1 | | | | | | | | |
| 7 | Copper Tube (D)-High Side | - | 4A0921-01 | 1 | | | | | | | | |
| 8 | Copper Tube (F)-High Side | - | 4A4623-01 | 1 | | | | | | | | |
| 9 | Copper Tube (L)-Hot Gas | - | 2A4814G02 | 1 | | | | | | | | |
| 10 | Copper Tube (R)-Hot Gas | - | 2A4815G02 | 1 | | | | | | | | |
| 11 | Copper Tube (Z)-High Side | - | 4A4635-01 | 1 | | | | | | | | |
| 12 | Copper Tube-Hot Gas | - | 3A0212G01 | 1 | | | | | | | | |
| 13 | Copper Tube-Line Valve | - | 3A2312-01 | 1 | | | | | | | | |
| 14 | Copper Tube-Service Valve | - | 4A4624-01 | 1 | | | | | | | | |
| 15 | Expansion Valve Cover | - | 3A0944-01 | 2 | | | | | | | | |
| 16 | Expansion Valve | - | 4A1482-01 | 2 | | | | | | | | |
| 17 | Holder-Expansion Valve | - | 3A0107-01 | 2 | | | | | | | | |
| 18 | Clamp | - | 443461-02 | 2 | | | | | | | | |
| 19 | Insulation Tubing | L=150 | 7762-3555 | 2 | | | | | | | | |
| 20 | Heat Exchanger | - | 2A4816G01 | 1 | | | | | | | | |
| 21 | Front Frame (A) | - | 3A4635-01 | 1 | | | | | | | | |
| 21a | T2 Screw | 4x8 | 7P31-0408 | 4 | | | | | | | | |
| 22 | Side Frame (A) | - | 219472G01 | 1 | | | | | | | | |
| 22a | T2 Screw | 4x8 | 7P31-0408 | 3 | | | | | | | | |
| 23 | Side Frame(B) | - | 3A3027-01 | 1 | | | | | | | | |
| 23a | T2 Screw | 4x8 | 7P31-0408 | 4 | | | | | | | | |
| 24 | Rear Frame | - | 439285G04 | 1 | | | | | | | | |
| 24a | T2 Screw | 4x8 | 7P31-0408 | 4 | | | | | | | | |
| 25 | Shroud | - | 213696-01 | 1 | | | | | | | | |
| 25a | T2 Screw | 4x8 | 7P31-0408 | 6 | | | | | | | | |
| 26 | Fan Motor Bracket | - | 327180-01 | 1 | | | | | | | | |
| 26a | Hex Bolt Assembly (LF) | 5x12, SS | 7B0230512 | 4 | | | | | | | | |
| 27 | Fan Motor | 50 Watt--GEHI | 4A3158-01 | 1 | | | | | | | | |
| 27a | Self-Locking Nut | 8-32 | 7N2110832 | 4 | | | | | | | | |
| 28 | Fan Blade | - | 4A0197-01 | 1 | | | | | | | | |
| 29 | Capacitor | 5.0MFD, 250VAC | 443192-02 | 1 | | | | | | | | |
| 29a | T2 Screw | 4x10 | 7P31-0410 | 1 | | | | | | | | |

Title: **B. Refrigeration Circuit** Model: **KM-1301SAH/3**

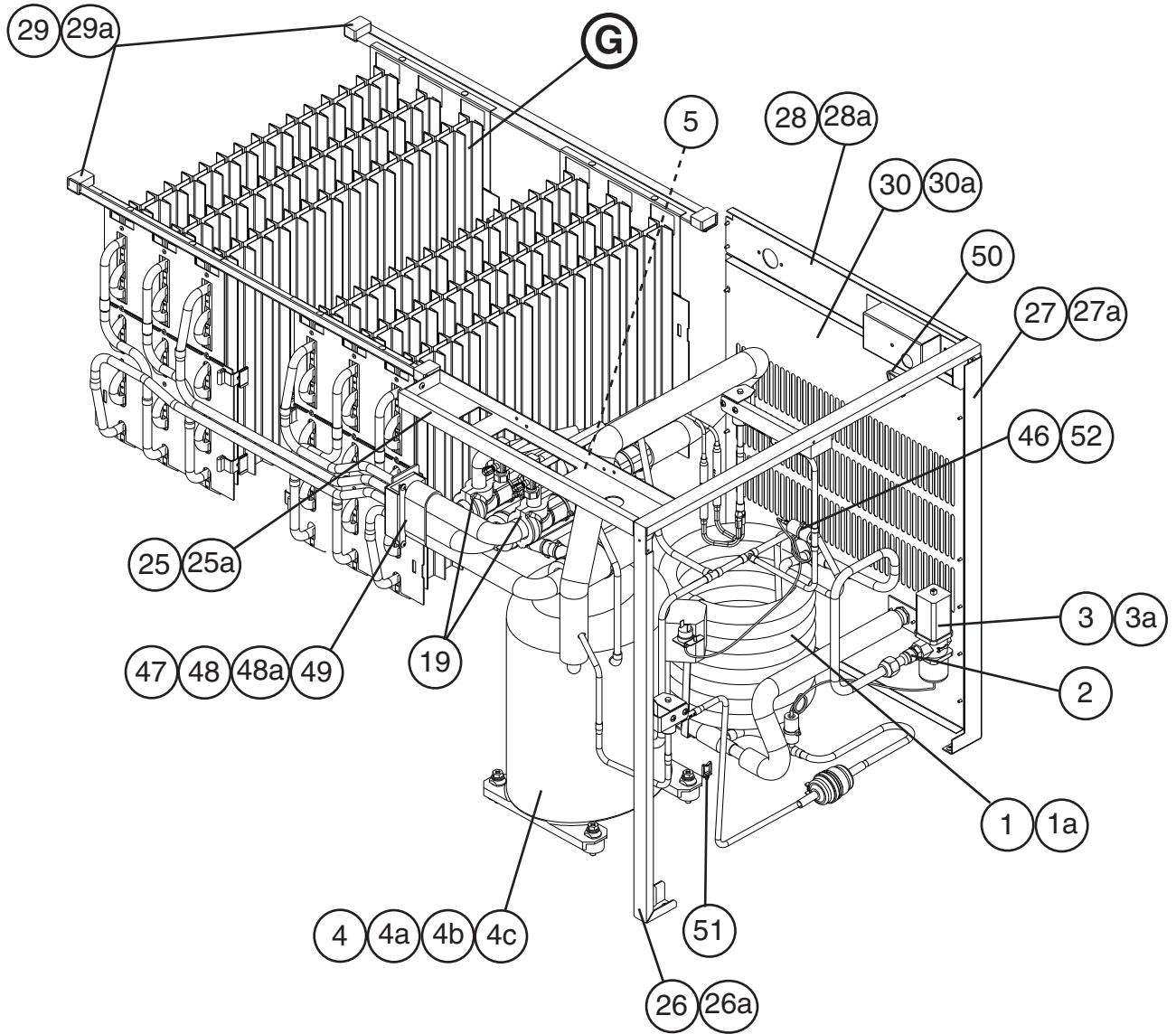
| Index No. | Description | Material or Model Number | Part Number | T-0 to U-1 | Required Number | | | | | | | | |
|-----------|-------------------------|--------------------------|-------------|------------|-----------------|--|--|--|--|--|--|--|--|
| | | | | | | | | | | | | | |
| 30 | Holder-Thermistor | - | 427430-01 | 1 | | | | | | | | | |
| 31 | Thermistor | L=1050 | 429006-03 | 1 | | | | | | | | | |
| 32 | Insulation-Thermistor | - | 427441-01 | 1 | | | | | | | | | |
| 33 | Check Valve | - | 4A1373-01 | 2 | | | | | | | | | |
| 34 | Strainer | 5/16 | 441569-02 | 1 | | | | | | | | | |
| 35 | Valve Body-Hot Gas | - | 4A3978-01 | 1 | | | | | | | | | |
| 36 | Hot Gas Valve Bracket | - | 442162-01 | 1 | | | | | | | | | |
| 36a | T2 Screw | 4x8 | 7P31-0408 | 2 | | | | | | | | | |
| 37 | Valve Body-Line | - | 4A3276-01 | 1 | | | | | | | | | |
| 38 | Line Valve Bracket | - | 4A1406-01 | 1 | | | | | | | | | |
| 38a | T2 Screw | 4x8 | 7P31-0408 | 2 | | | | | | | | | |
| 39 | Coil-Valve | - | 4A3277-01 | 2 | | | | | | | | | |
| 39a | Bolt | - | 4A3277F01 | 2 | | | | | | | | | |
| 39b | Truss Head Screw | 4x8 | 7C31-0408 | 4 | | | | | | | | | |
| 40 | Drier | - | 4A2666-01 | 1 | | | | | | | | | |
| 41 | Nylon Tie | PLWP3H-TL | 8911-0301 | 1 | | | | | | | | | |
| 42 | Service Valve | - | 4A3420-01 | 2 | | | | | | | | | |
| 42a | Hex Head Tapping Screw | 1/4-20x1/2 | 7B0311412 | 2 | | | | | | | | | |
| 43 | Pressure Switch | - | 433441-07 | 1 | | | | | | | | | |
| 44 | Pressure Switch Bracket | - | 434938-01 | 1 | | | | | | | | | |
| 44a | T2 Screw | 4x8 | 7P31-0408 | 1 | | | | | | | | | |
| 45 | Insulation | - | 436671-01 | 1 | | | | | | | | | |
| 46 | Insulated Rubber Tube | - | 323975G01 | 1 | | | | | | | | | |
| 47 | Insulation Holder | - | 3A0979-01 | 1 | | | | | | | | | |
| 47a | T2 Screw | 4x8, SS | 7P32-0408 | 2 | | | | | | | | | |
| 48 | Insulation Tubing | L=40 | 7762-1020 | 1 | | | | | | | | | |
| 49 | Wire Saddle | - | 4A0338-02 | 3 | | | | | | | | | |
| 50 | Cable Tie | CV-200 | 8911-0200 | 15 | | | | | | | | | |
| 51 | Clamp | - | 4A2338-01 | 1 | | | | | | | | | |
| 52 | Frame Seal | Black EPDM | 323925-01 | 4 | | | | | | | | | |
| 52a | T2 Screw | 4x12, SS | 7P32-0412 | 4 | | | | | | | | | |

B. Refrigeration Circuit

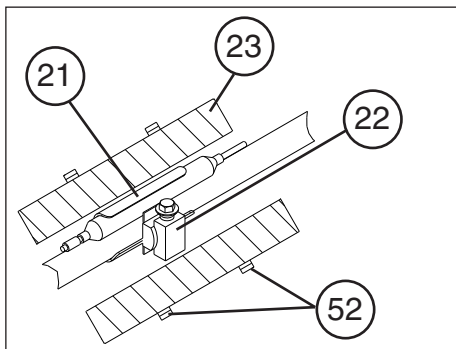
1/2

KM-1301SWH/3

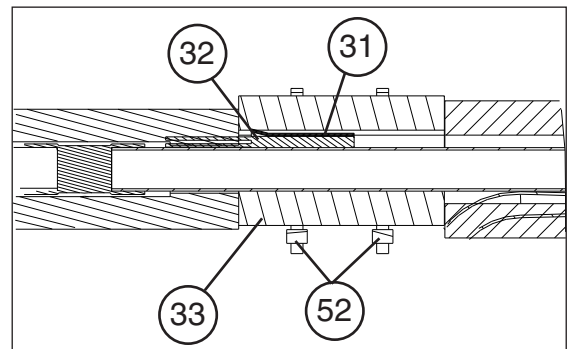
T-0 to U-1



Detailed TXV Bulb Attachment



Detailed Thermistor Attachment

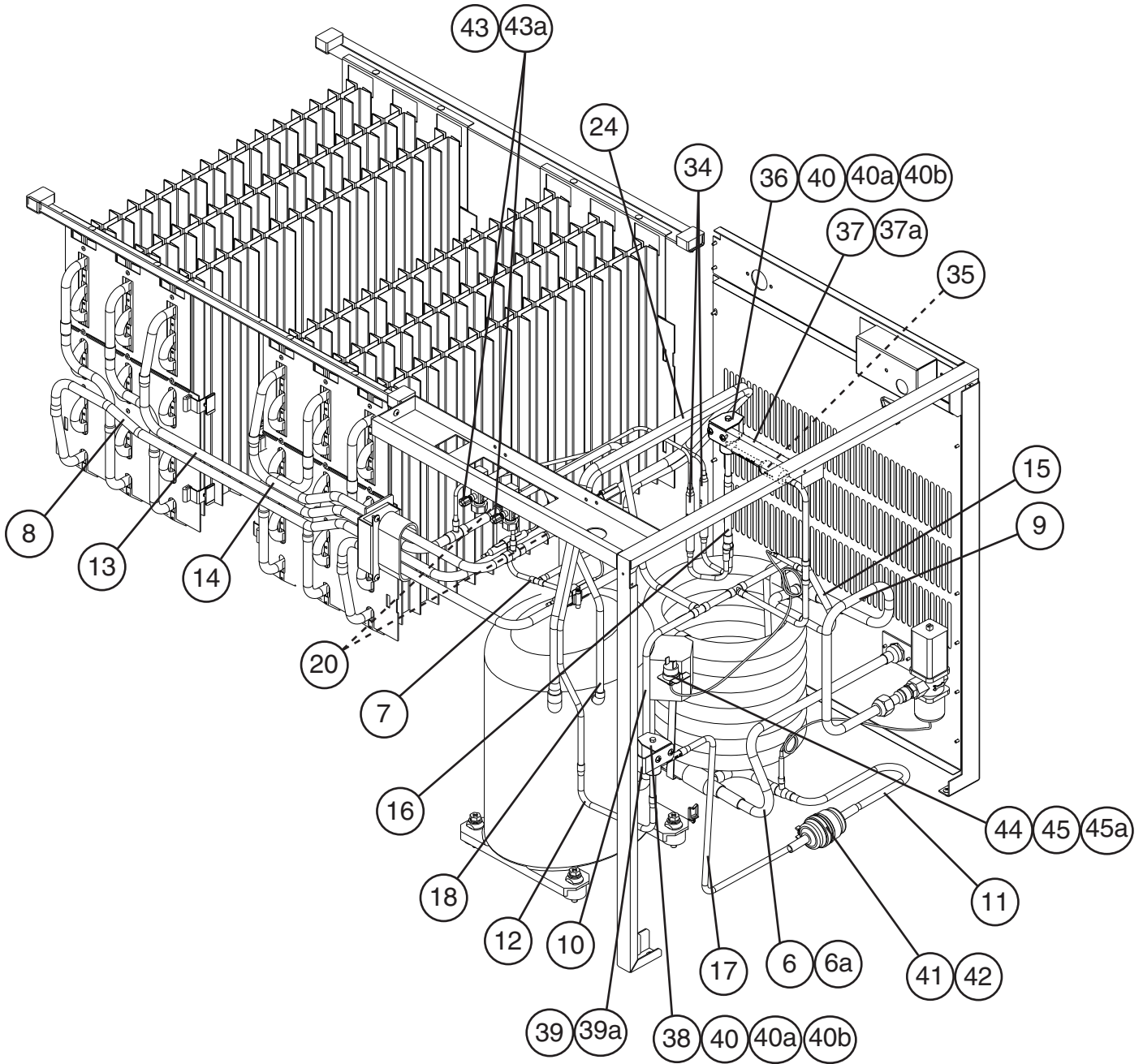


B. Refrigeration Circuit

2/2

KM-1301SWH/3

T-0 to U-1



| Title: B. Refrigeration Circuit Model: KM-1301SWH/3 | | | | | | | | | | | | |
|---|---------------------------------|---------------------------------------|-------------|------------|-----------------|--|--|--|--|--|--|--|
| Index No. | Description | Material or Model Number | Part Number | T-0 to U-1 | Required Number | | | | | | | |
| | | | | | | | | | | | | |
| G | Evaporator Assembly | - | 104696G03 | 1 | | | | | | | | |
| 1 | Condenser | HS-0163 | 2A2359G04 | 1 | | | | | | | | |
| 1a | Hex Head Bolt w/Washer (LF) | 5x12 | 7B0130512 | 2 | | | | | | | | |
| 2 | Male Connector | - | 4A1087-01 | 1 | | | | | | | | |
| 3 | Water Regulator | - | 4A0911-07 | 1 | | | | | | | | |
| 3a | Truss Head Screw | 4x6 | 7C31-0406 | 2 | | | | | | | | |
| 4 | Compressor | KM-1301SWH CS12K6E-PFV-237 | 4A4134-01 | 1 | | | | | | | | |
| | | KM-1301SWH3 CS12K6E-TF5-237 | 4A4135-01 | | | | | | | | | |
| 4a | Spacer | - | 434921-01 | 4 | | | | | | | | |
| 4b | Grommet | - | 434922-01 | 4 | | | | | | | | |
| 4c | Bolt | 8x45 | 437889-01 | 4 | | | | | | | | |
| 5 | Connection Tee Cover | - | 4A1379-01 | 1 | | | | | | | | |
| 6 | Copper Tube (A) | - | 4A4638G01 | 1 | | | | | | | | |
| 6a | T2 Screw | 4x8 | 7P31-0408 | 2 | | | | | | | | |
| 7 | Copper Tube (A)-Expansion Valve | - | 3A5061G01 | 1 | | | | | | | | |
| 8 | Copper Tube (A)-Low Side | - | 3A5052G01 | 1 | | | | | | | | |
| 9 | Copper Tube (B) | - | 4A4639G01 | 1 | | | | | | | | |
| 10 | Copper Tube (B)-High Side | Discharge Line | 2A4826G01 | 1 | | | | | | | | |
| 11 | Copper Tube (B)-High Side | Liquid Line | 3A2297G01 | 1 | | | | | | | | |
| 12 | Copper Tube (F)-High Side | - | 4A4623-01 | 1 | | | | | | | | |
| 13 | Copper Tube (L)-Hot Gas | - | 2A4814G01 | 1 | | | | | | | | |
| 14 | Copper Tube (R)-Hot Gas | - | 2A4815G01 | 1 | | | | | | | | |
| 15 | Copper Tube (Z)-High Side | - | 4A4636-01 | 1 | | | | | | | | |
| 16 | Copper Tube-Hot Gas | - | 3A0212G01 | 1 | | | | | | | | |
| 17 | Copper Tube-Line Valve | - | 3A2312-02 | 1 | | | | | | | | |
| 18 | Copper Tube-Service Valve | - | 4A4624-01 | 1 | | | | | | | | |
| 19 | Expansion Valve Cover | - | 3A0944-01 | 2 | | | | | | | | |
| 20 | Expansion Valve | - | 4A1482-01 | 2 | | | | | | | | |
| 21 | Holder Expansion Valve | - | 3A0107-01 | 2 | | | | | | | | |
| 22 | Clamp | - | 443461-02 | 2 | | | | | | | | |
| 23 | Insulation Tube | L=150 | 7762-3555 | 2 | | | | | | | | |
| 24 | Heat Exchanger | - | 2A4816G01 | 1 | | | | | | | | |
| 25 | Front Frame (A) | - | 3A4635-01 | 1 | | | | | | | | |
| 25a | T2 Screw | 4x8 | 7P31-0408 | 4 | | | | | | | | |
| 26 | Side Frame (A) | - | 219472G01 | 1 | | | | | | | | |
| 26a | T2 Screw | 4x8 | 7P31-0408 | 3 | | | | | | | | |
| 27 | Side Frame (B) | - | 3A3027-01 | 1 | | | | | | | | |
| 27a | T2 Screw | 4x8 | 7P31-0408 | 7 | | | | | | | | |
| 28 | Rear Frame | - | 439285G04 | 1 | | | | | | | | |
| 28a | T2 Screw | 4x8 | 7P31-0408 | 4 | | | | | | | | |
| 29 | Frame Seal | Black, EPDM | 323925-01 | 4 | | | | | | | | |
| 29a | T2 Screw | 4x12, SS | 7P32-0412 | 4 | | | | | | | | |
| 30 | Rear Panel (A) | - | 2A1194-01 | 1 | | | | | | | | |
| 30a | T2 Screw | 4x8 | 7P31-0408 | 3 | | | | | | | | |

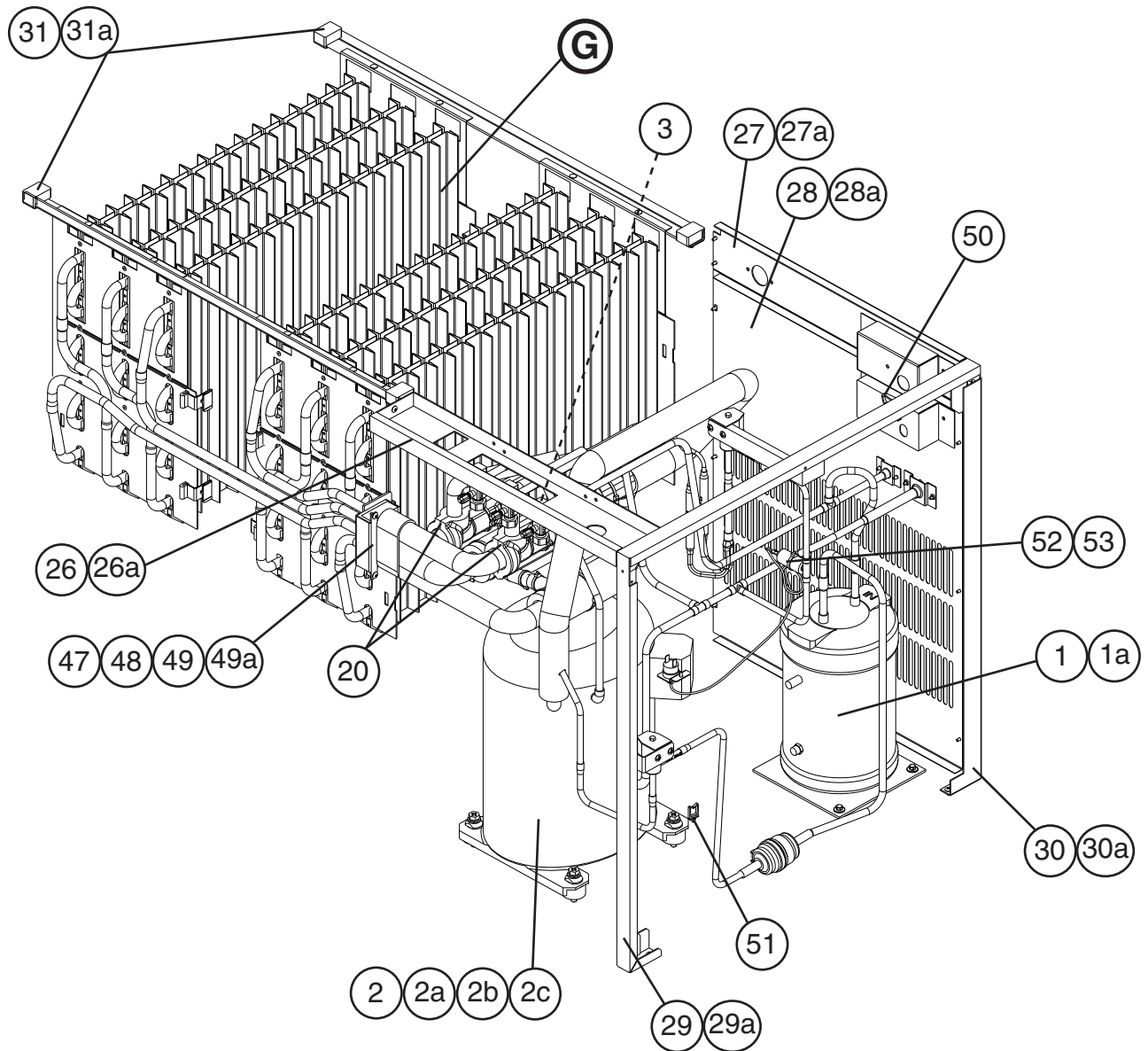
| Title: B. Refrigeration Circuit Model: KM-1301SWH/3 | | | | | | | | | | | | |
|---|-------------------------|--------------------------|-------------|------------|-----------------|--|--|--|--|--|--|--|
| Index No. | Description | Material or Model Number | Part Number | T-0 to U-1 | Required Number | | | | | | | |
| | | | | | | | | | | | | |
| 31 | Holder-Thermistor | - | 427430-01 | 1 | | | | | | | | |
| 32 | Thermistor | L=1050 | 429006-03 | 1 | | | | | | | | |
| 33 | Insulation-Thermistor | - | 427441-01 | 1 | | | | | | | | |
| 34 | Check Valve | - | 4A1373-01 | 2 | | | | | | | | |
| 35 | Strainer | 5/16 | 441569-02 | 1 | | | | | | | | |
| 36 | Valve Body-Hot Gas | - | 4A3978-01 | 1 | | | | | | | | |
| 37 | Hot Gas Valve Bracket | - | 442162-01 | 1 | | | | | | | | |
| 37a | T2 Screw | 4x8 | 7P31-0408 | 2 | | | | | | | | |
| 38 | Valve Body-Line | - | 4A3276-01 | 1 | | | | | | | | |
| 39 | Line Valve Bracket | - | 4A1406-01 | 1 | | | | | | | | |
| 39a | T2 Screw | 4x8 | 7P31-0408 | 2 | | | | | | | | |
| 40 | Coil-Valve | - | 4A3277-01 | 2 | | | | | | | | |
| 40a | Bolt | - | 4A3277F01 | 2 | | | | | | | | |
| 40b | T2 Screw | 4x8 | 7P31-0408 | 4 | | | | | | | | |
| 41 | Drier | - | 4A2666-01 | 1 | | | | | | | | |
| 42 | Nylon Tie | PLWP3H-TL | 8911-0301 | 1 | | | | | | | | |
| 43 | Service Valve | - | 4A3420-01 | 2 | | | | | | | | |
| 43a | Hex Head Tapping Screw | 1/4-20x1/2 | 7B03I1412 | 2 | | | | | | | | |
| 44 | Pressure Switch | - | 433441-05 | 1 | | | | | | | | |
| 45 | Pressure Switch Bracket | - | 434938-01 | 1 | | | | | | | | |
| 45a | T2 Screw | 4x8 | 7P31-0408 | 1 | | | | | | | | |
| 46 | Insulation | L=40 | 436671-01 | 1 | | | | | | | | |
| 47 | Insulated Rubber Tube | - | 323975G01 | 1 | | | | | | | | |
| 48 | Insulation Holder | SS | 3A0979-01 | 1 | | | | | | | | |
| 48a | T2 Screw | 4x8, SS | 7P32-0408 | 2 | | | | | | | | |
| 49 | Insulation Tube | L=40 | 7762-1020 | 2 | | | | | | | | |
| 50 | Clamp | - | 4A2338-01 | 1 | | | | | | | | |
| 51 | Wire Saddle | - | 4A0338-02 | 3 | | | | | | | | |
| 52 | Cable Tie | CV-200 | 8911-0200 | 16 | | | | | | | | |

B. Refrigeration Circuit

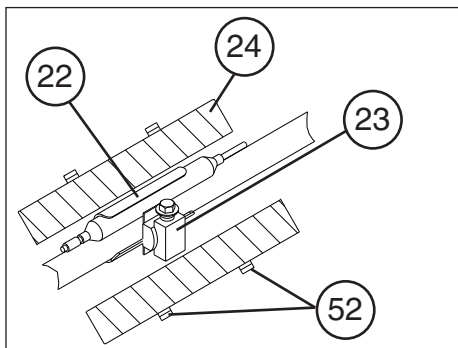
1/2

KM-1301SRH/3

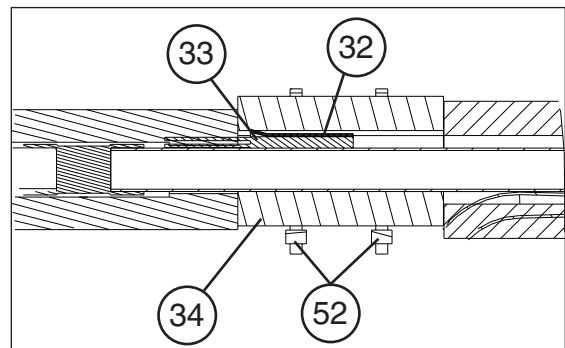
T-0 to U-1



Detailed TXV Bulb Attachment



Detailed Thermistor Attachment

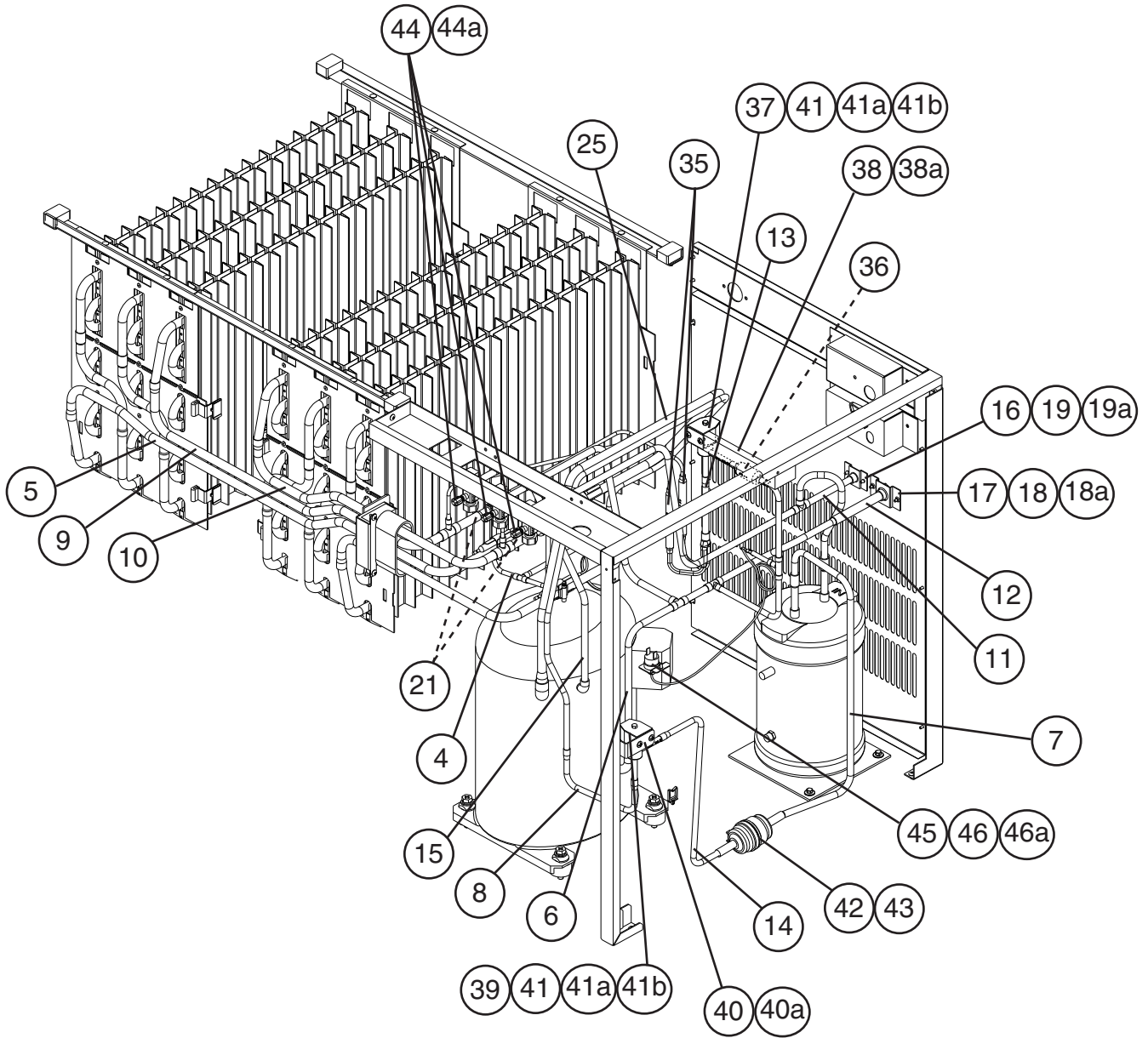


B. Refrigeration Circuit

2/2

KM-1301SRH/3

T-0 to U-1



| Title: B. Refrigeration Circuit Model: KM-1301SRH/3 | | | | | | | | | | | | |
|---|---------------------------------|---------------------------------------|-------------|------------|-----------------|--|--|--|--|--|--|--|
| Index No. | Description | Material or Model Number | Part Number | T-0 to U-1 | Required Number | | | | | | | |
| | | | | | | | | | | | | |
| G | Evaporator Assembly | - | 104696G03 | 1 | | | | | | | | |
| 1 | Receiver Tank | - | 437652-01 | 1 | | | | | | | | |
| 1a | Hex Head Bolt w/Washer (LF) | 5x10, SS | 7B0230510 | 3 | | | | | | | | |
| 2 | Compressor | KM-1301SRH CS12K6E-PFV-279 | 4A4134-02 | 1 | | | | | | | | |
| | | KM-1301SRH3 CE12K6E-TF5-279 | 4A4135-02 | 1 | | | | | | | | |
| 2a | Spacer | - | 434921-01 | 4 | | | | | | | | |
| 2b | Grommet | - | 434922-01 | 4 | | | | | | | | |
| 2c | Bolt | 8x45 | 437889-01 | 4 | | | | | | | | |
| 3 | Connection Tee Cover | - | 4A1379-01 | 1 | | | | | | | | |
| 4 | Copper Tube (A)-Expansion Valve | - | 3A5061G01 | 1 | | | | | | | | |
| 5 | Copper Tube (A)-Low Side | - | 3A5052G01 | 1 | | | | | | | | |
| 6 | Copper Tube (B)-High Side | - | 2A4826G01 | 1 | | | | | | | | |
| 7 | Copper Tube (C)-High Side | - | 324212-01 | 1 | | | | | | | | |
| 8 | Copper Tube (F)-High Side | - | 4A4623-01 | 1 | | | | | | | | |
| 9 | Copper Tube (L)-Hot Gas | - | 2A4814G01 | 1 | | | | | | | | |
| 10 | Copper Tube (R)-Hot Gas | - | 2A4815G01 | 1 | | | | | | | | |
| 11 | Copper Tube (Y)-High Side | - | 3A5075G01 | 1 | | | | | | | | |
| 12 | Copper Tube (Z)-High Side | - | 4A4637-01 | 1 | | | | | | | | |
| 13 | Copper Tube-Hot Gas | - | 3A0212G01 | 1 | | | | | | | | |
| 14 | Copper Tube-Line Valve | - | 3A2312-01 | 1 | | | | | | | | |
| 15 | Copper Tube-Service Valve | - | 4A4624-01 | 1 | | | | | | | | |
| 16 | Coupling | - | 433751G01 | 1 | | | | | | | | |
| 17 | Coupling | - | 434136G01 | 1 | | | | | | | | |
| 18 | Tube Holder-L | - | 438245-01 | 1 | | | | | | | | |
| 18a | T2 Screw | 4x8 | 7P31-0408 | 2 | | | | | | | | |
| 19 | Tube Holder-S | - | 438246-01 | 1 | | | | | | | | |
| 19a | T2 Screw | 4x8 | 7P31-0408 | 2 | | | | | | | | |
| 20 | Expansion Valve Cover | - | 3A0944-01 | 2 | | | | | | | | |
| 21 | Expansion Valve | - | 4A1482-01 | 2 | | | | | | | | |
| 22 | Holder Expansion Valve | - | 3A0107-01 | 2 | | | | | | | | |
| 23 | Clamp | - | 443461-02 | 2 | | | | | | | | |
| 24 | Insulation Tube | L=150 | 7762-3555 | 2 | | | | | | | | |
| 25 | Heat Exchanger | - | 2A4816G01 | 1 | | | | | | | | |
| 26 | Front Frame (A) | - | 3A4635-01 | 1 | | | | | | | | |
| 26a | T2 Screw | 4x8 | 7P31-0408 | 4 | | | | | | | | |
| 27 | Rear Frame | - | 439285G04 | 1 | | | | | | | | |
| 27a | T2 Screw | 4x8 | 7P31-0408 | 4 | | | | | | | | |
| 28 | Rear Panel (A) | - | 213777G02 | 1 | | | | | | | | |
| 28a | T2 Screw | 4x8 | 7P31-0408 | 3 | | | | | | | | |
| 29 | Side Frame (A) | - | 219472G01 | 1 | | | | | | | | |
| 29a | T2 Screw | 4x8 | 7P31-0408 | 3 | | | | | | | | |
| 30 | Side Frame (B) | - | 3A3027-01 | 1 | | | | | | | | |
| 30a | T2 Screw | 4x8 | 7P31-0408 | 5 | | | | | | | | |

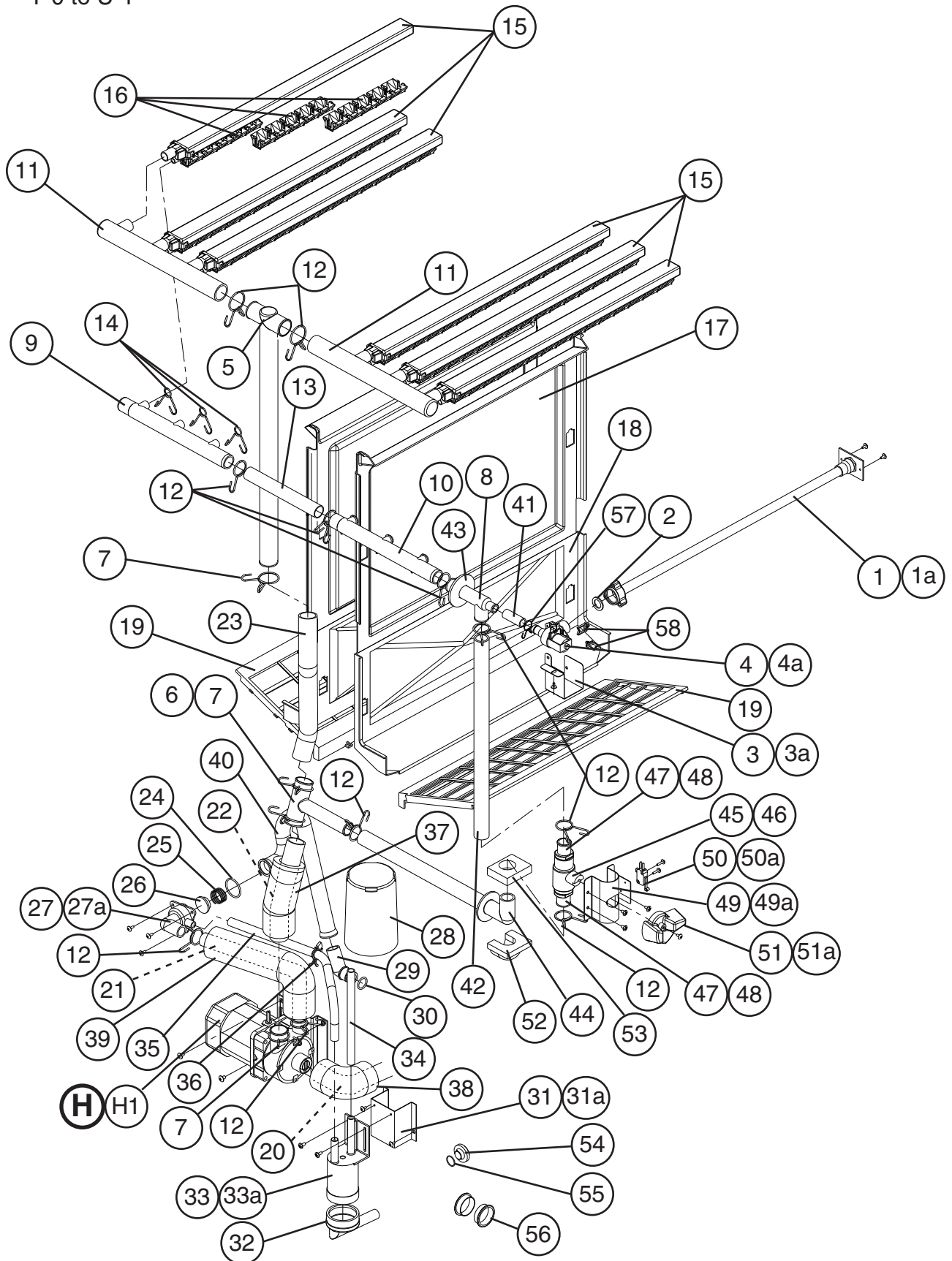
Title: **B. Refrigeration Circuit** Model: **KM-1301SRH/3**

| Index No. | Description | Material or Model Number | Part Number | Required Number | | | | | | | | | | | | | | | | |
|-----------|-------------------------|--------------------------|-------------|-----------------|--|--|--|--|--|--|--|--|--|--|--|--|--|--|--|--|
| | | | | T-0 to U-1 | | | | | | | | | | | | | | | | |
| 31 | Frame Seal | Black EPDM | 323925-01 | 4 | | | | | | | | | | | | | | | | |
| 31a | T2 Screw | 4x12, SS | 7P32-0412 | 4 | | | | | | | | | | | | | | | | |
| 32 | Holder-Thermistor | - | 427430-01 | 1 | | | | | | | | | | | | | | | | |
| 33 | Thermistor | L=1050 | 429006-03 | 1 | | | | | | | | | | | | | | | | |
| 34 | Insulation-Thermistor | - | 427441-01 | 1 | | | | | | | | | | | | | | | | |
| 35 | Check Valve | - | 4A1373-01 | 2 | | | | | | | | | | | | | | | | |
| 36 | Strainer | 5/16 | 441569-02 | 1 | | | | | | | | | | | | | | | | |
| 37 | Valve Body-Hot Gas | - | 4A3978-01 | 1 | | | | | | | | | | | | | | | | |
| 38 | Hot Gas Valve Bracket | - | 442162-01 | 1 | | | | | | | | | | | | | | | | |
| 38a | T2 Screw | 4x8 | 7P31-0408 | 2 | | | | | | | | | | | | | | | | |
| 39 | Valve Body-Line | - | 4A3276-01 | 1 | | | | | | | | | | | | | | | | |
| 40 | Line Valve Bracket | - | 4A1406-01 | 1 | | | | | | | | | | | | | | | | |
| 40a | T2 Screw | 4x8 | 7P31-0408 | 2 | | | | | | | | | | | | | | | | |
| 41 | Coil-Valve | - | 4A3277-01 | 2 | | | | | | | | | | | | | | | | |
| 41a | Bolt | - | 4A3277F01 | 2 | | | | | | | | | | | | | | | | |
| 41b | Truss Head Screw | 4x8 | 7C31-0408 | 4 | | | | | | | | | | | | | | | | |
| 42 | Drier | - | 4A2666-01 | 1 | | | | | | | | | | | | | | | | |
| 43 | Nylon Tie | PLWP3H-TL | 8911-0301 | 1 | | | | | | | | | | | | | | | | |
| 44 | Service Valve | - | 4A3420-01 | 3 | | | | | | | | | | | | | | | | |
| 44a | Hex Head Tapping Screw | 1/4-20x1/2 | 7B0311412 | 3 | | | | | | | | | | | | | | | | |
| 45 | Pressure Switch | - | 433441-07 | 1 | | | | | | | | | | | | | | | | |
| 46 | Pressure Switch Bracket | - | 434938-01 | 1 | | | | | | | | | | | | | | | | |
| 46a | T2 Screw | 4x8 | 7P31-0408 | 1 | | | | | | | | | | | | | | | | |
| 47 | Insulation | - | 436671-01 | 1 | | | | | | | | | | | | | | | | |
| 48 | Insulated Rubber Tube | - | 323975G01 | 1 | | | | | | | | | | | | | | | | |
| 49 | Insulation Holder | SS | 3A0979-01 | 1 | | | | | | | | | | | | | | | | |
| 49a | T2 Screw | 4x8, SS | 7P32-0408 | 2 | | | | | | | | | | | | | | | | |
| 50 | Clamp | - | 4A2338-01 | 1 | | | | | | | | | | | | | | | | |
| 51 | Wire Saddle | - | 4A0338-02 | 3 | | | | | | | | | | | | | | | | |
| 52 | Cable Tie | CV-200 | 8911-0200 | 15 | | | | | | | | | | | | | | | | |
| 53 | Insulation Tubing | L=40 | 7762-1020 | 1 | | | | | | | | | | | | | | | | |

C. Water Circuit

KM-1301SAH/3, KM-1301SWH/3, KM-1301SRH/3

T-0 to U-1



| Title: C. Water Circuit Model: KM-1301SAH/3, KM-1301SWH/3, KM-1301SRH/3 | | | | | | | | | | | | |
|---|------------------------|--------------------------|-------------|------------|-----------------|--|--|--|--|--|--|--|
| Index No. | Description | Material or Model Number | Part Number | T-0 to U-1 | Required Number | | | | | | | |
| | | | | | | | | | | | | |
| H | Pump Motor Assembly | S-0730 | 215692A03 | 1 | | | | | | | | |
| H1 | Truss Head Screw | 5x8, SS | 7C32-0508 | 2 | | | | | | | | |
| 1 | Water Supply Pipe | - | 4A0768G01 | 1 | | | | | | | | |
| 1a | T2 Screw | 4x8 | 7P31-0408 | 2 | | | | | | | | |
| 2 | Rubber Gasket | - | 413854-03 | 1 | | | | | | | | |
| 3 | Water Valve Bracket | - | 3A2685-01 | 1 | | | | | | | | |
| 3a | T2 Screw | 4x8 | 7P31-0408 | 1 | | | | | | | | |
| 4 | Water Valve | 1267560 | 4A1176-02 | 1 | | | | | | | | |
| 4a | Truss Head Screw | 4x8, SS | 7C32-0408 | 2 | | | | | | | | |
| 5 | Distributor | - | 438276G01 | 1 | | | | | | | | |
| 6 | Distributor (C) | - | 439238-01 | 1 | | | | | | | | |
| 7 | Hose Clamp | 32mm, SS | 427443-09 | 4 | | | | | | | | |
| 8 | Distributor (B) | - | 439239-01 | 1 | | | | | | | | |
| 9 | Distributor Hose (A) | - | 325738-01 | 1 | | | | | | | | |
| 10 | Distributor Hose (B) | - | 325738-02 | 1 | | | | | | | | |
| 11 | Distributor Hose (C) | - | 323985-01 | 2 | | | | | | | | |
| 12 | Hose Clamp | 25mm, SS | 427443-03 | 11 | | | | | | | | |
| 13 | Joint Pipe | - | 439297-01 | 1 | | | | | | | | |
| 14 | Hose Clamp | 13.5mm, SS | 427443-07 | 6 | | | | | | | | |
| 15 | Spray Tube | - | 437049G01 | 6 | | | | | | | | |
| 16 | Spray Guide (A) | - | 208586-01 | 18 | | | | | | | | |
| 17 | Separator (A) | - | 213622-01 | 2 | | | | | | | | |
| 18 | Separator (B) | - | 2A0100-01 | 2 | | | | | | | | |
| 19 | Cube Guide | - | 214243-01 | 2 | | | | | | | | |
| 20 | Hose (A) | Black, EPDM | 435091-01 | 1 | | | | | | | | |
| 21 | Hose (B) | - | 436599-01 | 1 | | | | | | | | |
| 22 | Vinyl Hose | L=170 | 7716-2732 | 1 | | | | | | | | |
| 23 | Vinyl Hose | L=230 | 7716-2732 | 1 | | | | | | | | |
| 24 | "O" Ring | - | 7611-G035 | 1 | | | | | | | | |
| 25 | Spring | - | 322110-01 | 1 | | | | | | | | |
| 26 | Valve Seat | Black, EPDM | 433705-01 | 1 | | | | | | | | |
| 27 | Valve Housing-Drain | ABS, White | 323613-01 | 1 | | | | | | | | |
| 27a | T2 Screw | 4x10, SS | 7P32-0410 | 3 | | | | | | | | |
| 28 | Overflow Cap | - | 323978-01 | 1 | | | | | | | | |
| 29 | Joint-Overflow | - | 323923-02 | 1 | | | | | | | | |
| 30 | "O" Ring | - | 7611-P018 | 1 | | | | | | | | |
| 31 | Float Switch Bracket | SS | 3A0449-01 | 1 | | | | | | | | |
| 31a | T2 Screw | 4x8, SS | 7P32-0408 | 2 | | | | | | | | |
| 32 | Connector-Float Switch | - | 426799-04 | 1 | | | | | | | | |
| 33 | Float Switch | - | 4A3624-01 | 1 | | | | | | | | |
| 33a | Truss Head Screw | 4x10, SS | 7C32-0410 | 2 | | | | | | | | |
| 34 | Silicone Hose | L=140 | 773013812 | 1 | | | | | | | | |
| 35 | Silicone Hose | L=390 | 773013896 | 1 | | | | | | | | |
| 36 | Clamp | 4253 | 427902-05 | 1 | | | | | | | | |
| 37 | Insulation Tube | L=80 | 7762-3555 | 1 | | | | | | | | |
| 38 | Insulation Tube | L=120 | 7762-3555 | 1 | | | | | | | | |

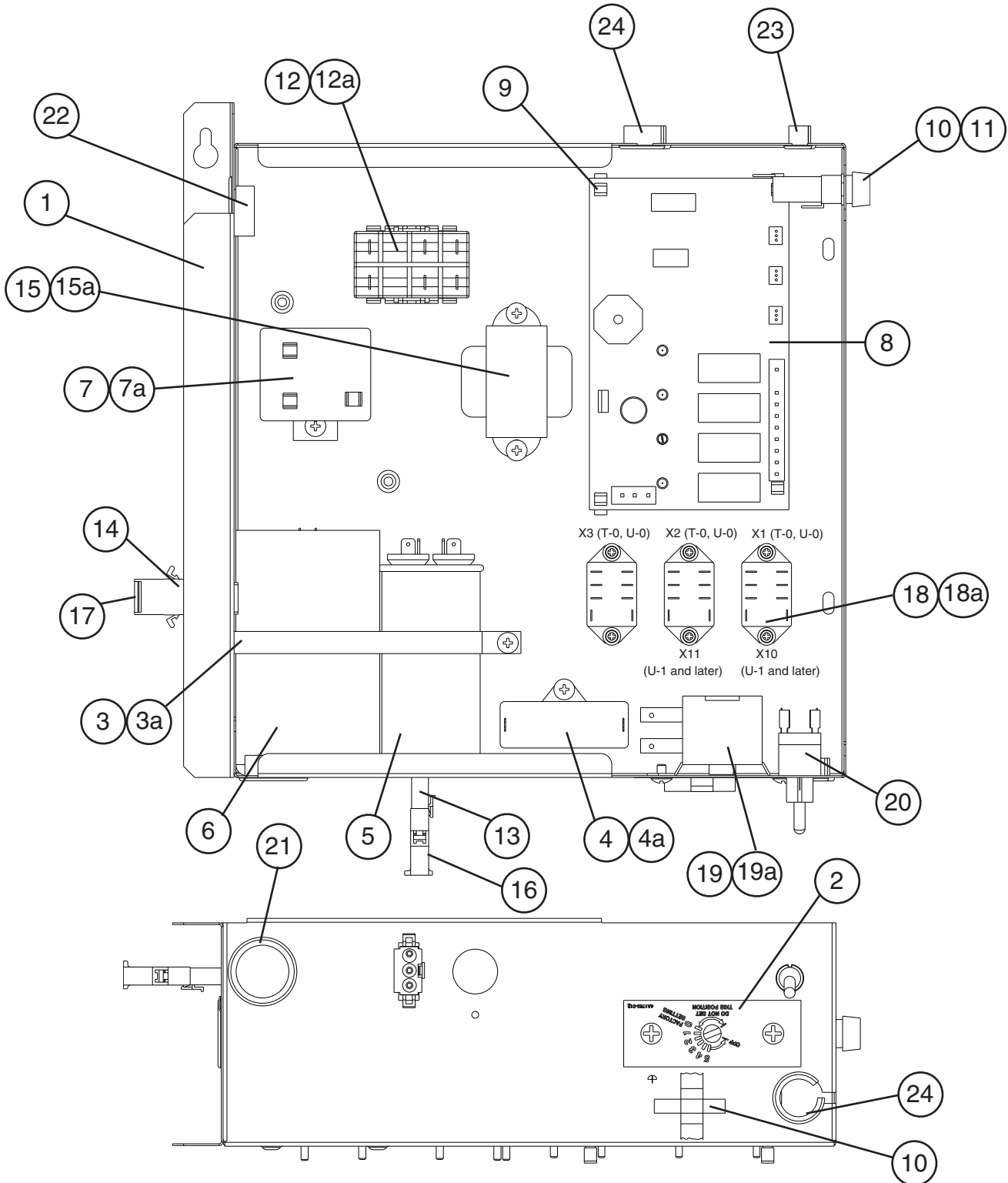
Title: **C. Water Circuit** Model: **KM-1301SAH/3, KM-1301SWH/3, KM-1301SRH/3**

| Index No. | Description | Material or Model Number | Part Number | T-0 to U-1 | Required Number | | | | | | | | | |
|-----------|---|--------------------------|-------------|------------|-----------------|--|--|--|--|--|--|--|--|--|
| | | | | | | | | | | | | | | |
| 39 | Insulation Tube | L=150 | 7762-3555 | 1 | | | | | | | | | | |
| 40 | Drain Hose | - | 324757-01 | 1 | | | | | | | | | | |
| 41 | Joint Hose | - | 439296-01 | 1 | | | | | | | | | | |
| 42 | Joint Hose | - | 439309-02 | 1 | | | | | | | | | | |
| 43 | Flange | - | 439267-02 | 1 | | | | | | | | | | |
| 44 | Bypass Hose | - | 439237-02 | 1 | | | | | | | | | | |
| 45 | Ball Valve Assembly (includes items 46, 47, and 48) | S-0761 | 442137A01 | 1 | | | | | | | | | | |
| 46 | Ball Valve | - | 439293-01 | 1 | | | | | | | | | | |
| 47 | Male Adapter | - | 325826-01 | 2 | | | | | | | | | | |
| 48 | "O" Ring | - | 7716-P018 | 2 | | | | | | | | | | |
| 49 | Valve Holder | - | 3A1178-01 | 1 | | | | | | | | | | |
| 49a | Truss Head Screw | 4x8 | 7C31-0408 | 3 | | | | | | | | | | |
| 50 | Microswitch | - | 4A2546-01 | 1 | | | | | | | | | | |
| 50a | Tapping Screw | 3x14 | 431415-02 | 2 | | | | | | | | | | |
| 51 | Handle | - | 215383-01 | 1 | | | | | | | | | | |
| 51a | T2 Screw | 4x8 | 7P31-0408 | 1 | | | | | | | | | | |
| 52 | Corner Insulation (A) | - | 439376-01 | 1 | | | | | | | | | | |
| 53 | Corner Insulation (B) | - | 439392-01 | 1 | | | | | | | | | | |
| 54 | Drain Plug | - | 309246-01 | 1 | | | | | | | | | | |
| 55 | "O" Ring | - | 7611-P015 | 1 | | | | | | | | | | |
| 56 | Bushing | SB-1500-21 | 420470-06 | 2 | | | | | | | | | | |
| 57 | Hose Clamp | 16.5mm, SS | 427443-04 | 1 | | | | | | | | | | |
| 58 | Wire Saddle | - | 4A0338-02 | 7 | | | | | | | | | | |

D. Control Box Assembly

KM-1301SAH, KM-1301SWH, KM-1301SRH

T-0 to U-1



- X1 (T-0, U-0) or X10 (U-1 and later) - Pump Direction Relay
- X2 (T-0, U-0) or X11 (U-1 and later) - Control Relay for X1 (T-0, U-0) or X10 (U-1 and later) Pump Direction Relay
- X3 - Harvest Pump Timer Relay (Auxiliary Code T-0, U-0)

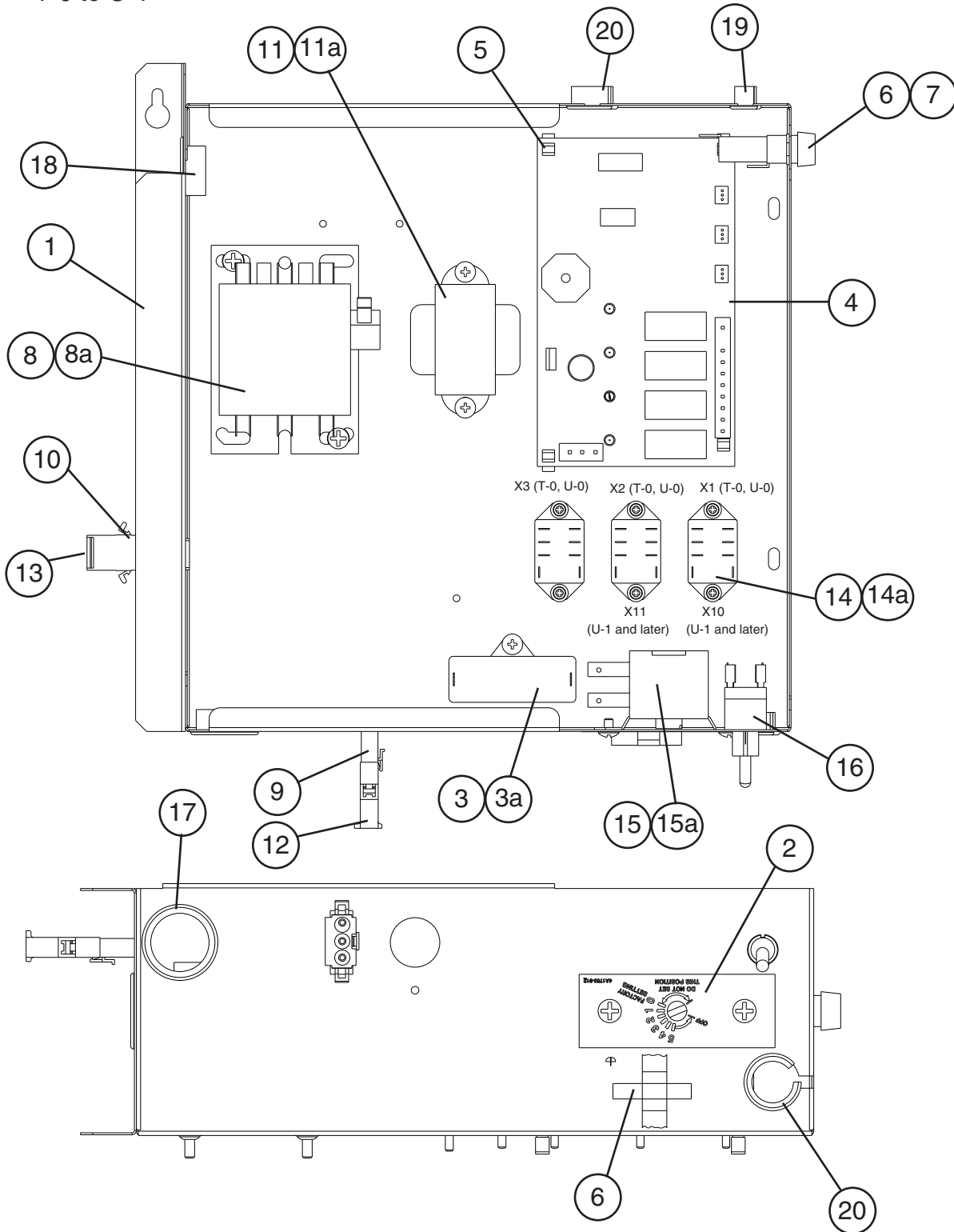
| Title: D. Control Box Assembly Model: KM-1301SAH, KM-1301SWH, KM-1301SRH | | | | | | | | | | | | |
|--|--|---|-------------|-----------------|-----|-----|--|--|--|--|--|--|
| Index No. | Description | Material or Model Number | Part Number | Required Number | | | | | | | | |
| | | | | T-0 | U-0 | U-1 | | | | | | |
| 1 | Control Box | - | 2A2524G03 | 1 | 1 | | | | | | | |
| 2 | Control Label | - | 4A1758-01 | 1 | 1 | | | | | | | |
| 3 | Strap | - | 4A2262-04 | 1 | 1 | | | | | | | |
| 3a | T2 Screw | 4x8 | 7P31-0408 | 1 | 1 | | | | | | | |
| 4 | Capacitor-Pump Motor | 10.0MFD, 250VAC | 443192-01 | 1 | 1 | | | | | | | |
| 4a | T2 Screw | 4x10 | 7P31-0410 | 1 | 1 | | | | | | | |
| 5 | Capacitor-Run | KM-1301SAH 35MFD, 370VAC | 3A2005-05 | 1 | 1 | | | | | | | |
| | | KM-1301SWH KM-1301SRH 30MFD, 370VAC | 3A2005-03 | 1 | 1 | | | | | | | |
| 6 | Capacitor-Start | KM-1301SAH 145-174MFD, 250VAC | 3A0076-01 | 1 | 1 | | | | | | | |
| | | KM-1301SWH KM-1301SRH 145-174MFD, 220VAC | 3A0076-11 | 1 | 1 | | | | | | | |
| 7 | Starter (Relay) | KM-1301SAH | 4A1107-09 | 1 | 1 | | | | | | | |
| | | KM-1301SWH KM-1301SRH | 4A1107-13 | 1 | 1 | | | | | | | |
| 7a | T2 Screw | 4x8 | 7P31-0408 | 1 | 1 | | | | | | | |
| 8 | Control Board | - | 2A3792-01 | 1 | 1 | | | | | | | |
| 9 | Board Support | - | 4A0336-03 | 4 | 4 | | | | | | | |
| 10 | Fuse | 10A, 250V | 4A0893-07 | 2 | 2 | | | | | | | |
| 11 | Fuse Holder | 1/4x1-1/4 | 4A3449-01 | 1 | 1 | | | | | | | |
| 12 | Magnetic Contactor | - | 428393-01 | 1 | 1 | | | | | | | |
| 12a | T2 Screw | 4x8 | 7P31-0408 | 2 | 2 | | | | | | | |
| 13 | Plug Housing | 3P 3191-03P | 412832-06 | 1 | 1 | | | | | | | |
| 14 | Plug Housing | 2P 3191-02P Red | 412832-09 | 1 | 1 | | | | | | | |
| 15 | Transformer | - | 3A0172-01 | 1 | 1 | | | | | | | |
| 15a | T2 Screw | 4x8 | 7P31-0408 | 2 | 2 | | | | | | | |
| 16 | Receptacle Housing | 3P 3191-03R1 | 412831-06 | 1 | 1 | | | | | | | |
| 17 | Receptacle Housing | 2P 319102R1 RED | 412831-09 | 1 | 1 | | | | | | | |
| 18 | Relay (X1, X2, and X3 - T-0 and U-0) (X10 and X11 - U-1 and later) | - | 406132-07 | 3 | 2 | | | | | | | |
| 18a | Tapping Screw | 3x8 | 431415-01 | 6 | 4 | | | | | | | |
| 19 | Thermostat | - | 4A2879-02 | 1 | 1 | | | | | | | |
| 19a | Truss Head Screw | 4x6 | 7C31-0406 | 2 | 2 | | | | | | | |
| 20 | Toggle Switch | - | 443119-01 | 1 | 1 | | | | | | | |
| 21 | Bushing | SB-1093-15 | 420470-03 | 1 | 1 | | | | | | | |
| 22 | Bushing | SB-1093-13 | 420470-12 | 1 | 1 | | | | | | | |
| 23 | Bushing | OCB-500 | 428394-02 | 1 | 1 | | | | | | | |
| 24 | Bushing | OCB-875 | 428394-04 | 2 | 2 | | | | | | | |

Note: Fan Capacitor for KM-1301SAH – See the Refrigeration Circuit in this manual.

D. Control Box Assembly

KM-1301SAH3, KM-1301SWH3, KM-1301SRH3

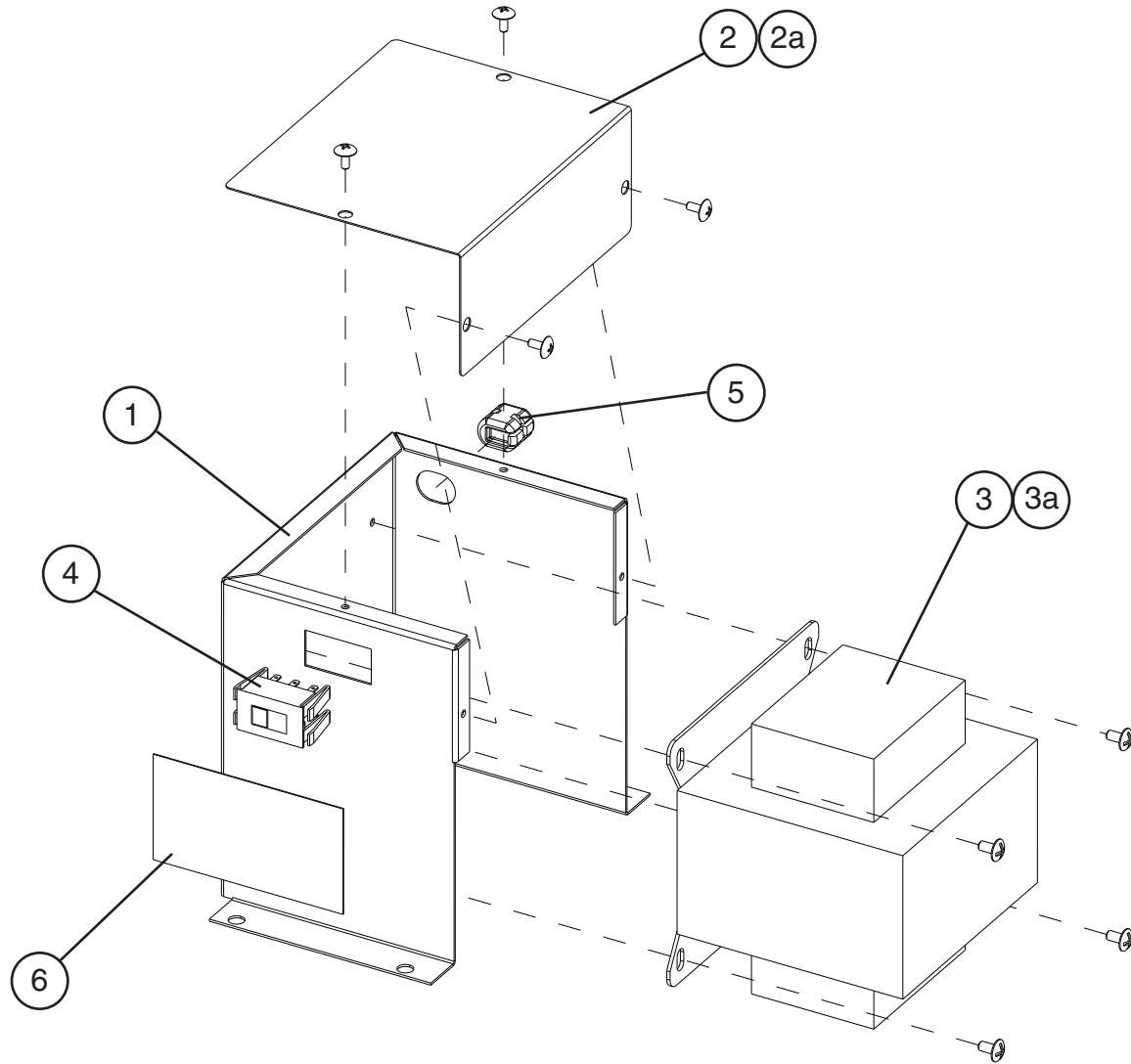
T-0 to U-1



X1 (T-0, U-0) or X10 (U-1 and later) - Pump Direction Relay
 X2 (T-0, U-0) or X11 (U-1 and later) - Control Relay for X1 (T-0, U-0) or X10 (U-1 and later) Pump Direction Relay
 X3 - Harvest Pump Timer Relay (Auxiliary Code T-0, U-0)

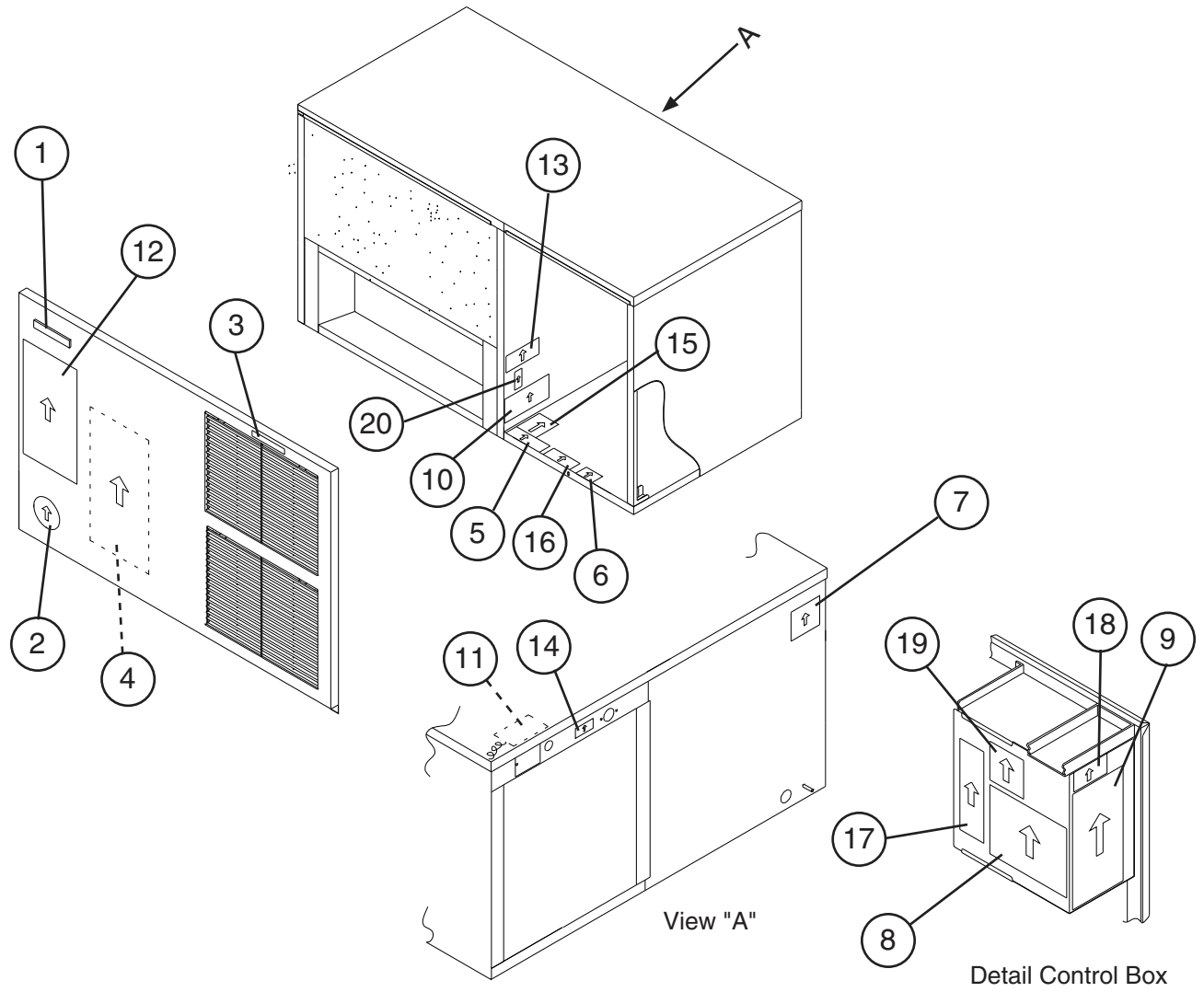
| Title: D. Control Box Assembly Model: KM-1301SAH3, KM-1301SWH3, KM-1301SRH3 | | | | | | | | | | | |
|---|--|--------------------------|-------------|-----------------|-----|-----|--|--|--|--|--|
| Index No. | Description | Material or Model Number | Part Number | Required Number | | | | | | | |
| | | | | T-0 | U-0 | U-1 | | | | | |
| 1 | Control Box | - | 2A2524G03 | 1 | 1 | | | | | | |
| 2 | Control Label | - | 4A1758-01 | 1 | 1 | | | | | | |
| 3 | Capacitor-Pump Motor | 10.0MFD, 250VAC | 443192-01 | 1 | 1 | | | | | | |
| 3a | T2 Screw | 4x10 | 7P31-0410 | 1 | 1 | | | | | | |
| 4 | Control Board | - | 2A3792-01 | 1 | 1 | | | | | | |
| 5 | Board Support | - | 4A0336-03 | 4 | 4 | | | | | | |
| 6 | Fuse | 10A, 250V | 4A0893-07 | 2 | 2 | | | | | | |
| 7 | Fuse Holder | 1/4x1-1/4 | 4A3449-01 | 1 | 1 | | | | | | |
| 8 | Magnetic Contactor | KM-1301SAH3 | 4A0794-02 | 1 | 1 | | | | | | |
| | | KM1301SWH3 | | | | | | | | | |
| | | KM-1301SRH3 | 4A0794-01 | 1 | 1 | | | | | | |
| 8a | Truss Head Screw | 4x12 | 7C31-0412 | 2 | 2 | | | | | | |
| 9 | Plug Housing | 3P 3191-03P | 412832-06 | 1 | 1 | | | | | | |
| 10 | Plug Housing | 2P 3191-02P | 412832-07 | 1 | 1 | | | | | | |
| 11 | Transformer | - | 3A0172-01 | 1 | 1 | | | | | | |
| 11a | T2 Screw | 4x8 | 7P31-0408 | 2 | 2 | | | | | | |
| 12 | Receptacle Housing | 3P 3191-03R1 | 412831-06 | 1 | 1 | | | | | | |
| 13 | Receptacle Housing | 2P 3191-02R1 | 412831-07 | 1 | 1 | | | | | | |
| 14 | Relay (X1, X2, and X3 - T-0 and U-0) (X10 and X11 - U-1 and later) | - | 406132-07 | 3 | 2 | | | | | | |
| 14a | Tapping Screw | 3x8 | 431415-01 | 6 | 4 | | | | | | |
| 15 | Thermostat | - | 4A2879-02 | 1 | 1 | | | | | | |
| 15a | Truss Head Screw | 4x6 | 7C31-0406 | 2 | 2 | | | | | | |
| 16 | Toggle Switch | - | 443119-01 | 1 | 1 | | | | | | |
| 17 | Bushing | SB-1093-15 | 420470-03 | 1 | 1 | | | | | | |
| 18 | Bushing | SB-1093-13 | 420470-12 | 1 | 1 | | | | | | |
| 19 | Bushing | OCB-500 | 428394-02 | 1 | 1 | | | | | | |
| 20 | Bushing | OCB-875 | 428394-04 | 2 | 2 | | | | | | |

E. Transformer Box Assembly
KM-1301SAH3, KM-1301SWH3, KM-1301SRH3
 T-0 to U-1



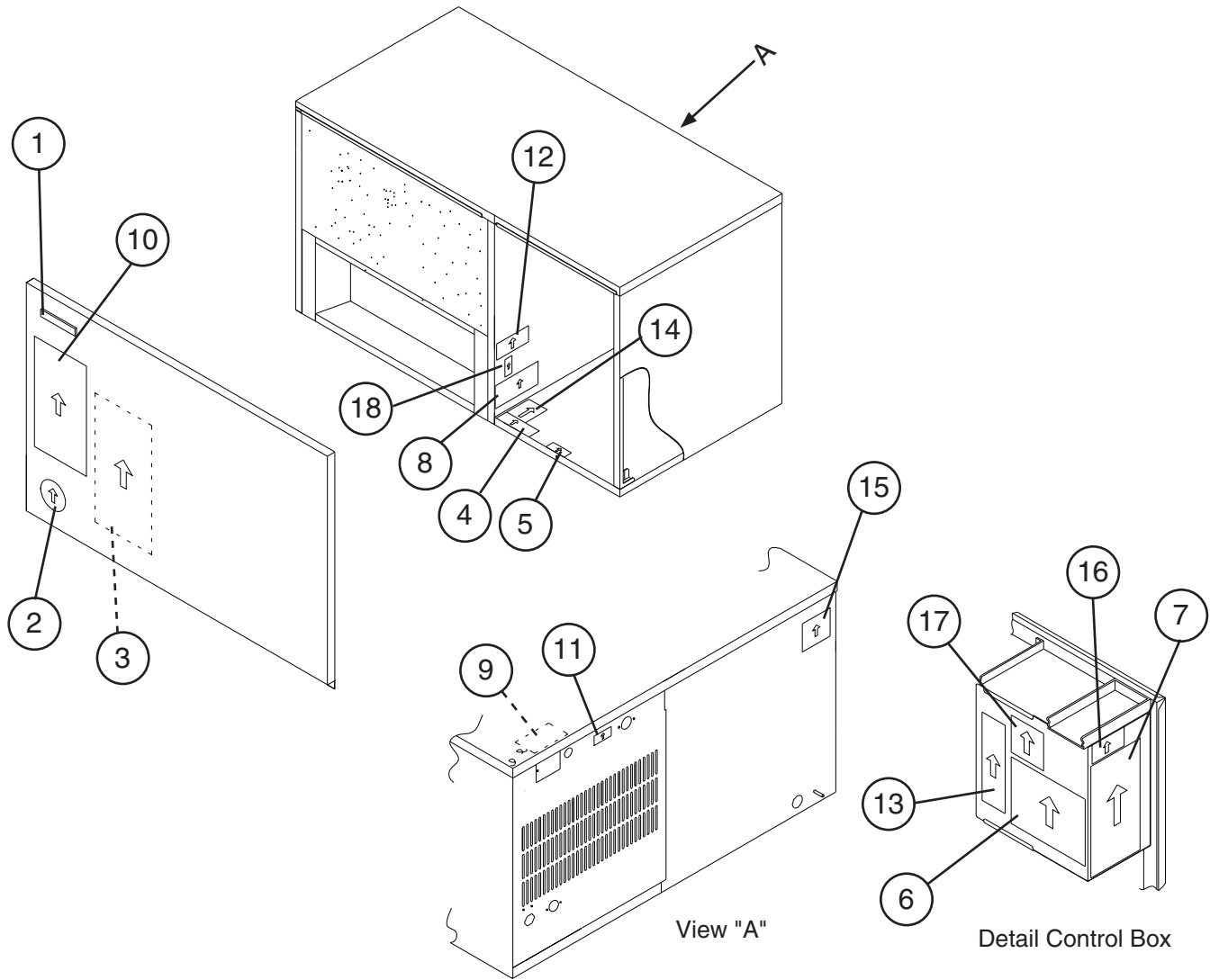
| Title: E. Transformer Box Assembly | | Model: KM-1301SAH3, KM-1301SWH3, KM-1301SRH3 | | | Required Number | | | | | | | | | | | | | | |
|------------------------------------|-------------------------|--|-------------|------------|-----------------|-----------------|---|-----------|---|--|--|--|--|--|--|--|--|--|--|
| Index No. | Description | Material or Model Number | Part Number | T-0 to U-1 | | | | | | | | | | | | | | | |
| | | | | | 1 | Transformer Box | - | 3A1101-01 | 1 | | | | | | | | | | |
| 2 | Transformer Box Cover | - | 438467-01 | 1 | | | | | | | | | | | | | | | |
| 2a | T2 Screw | 4x8 | 7P31-0408 | 4 | | | | | | | | | | | | | | | |
| 3 | Transformer | - | 4A0817-01 | 1 | | | | | | | | | | | | | | | |
| 3a | Truss Head Screw | 4x8 | 7C31-0408 | 4 | | | | | | | | | | | | | | | |
| 4 | Slide Switch | - | 4A1477-01 | 1 | | | | | | | | | | | | | | | |
| 5 | Bushing | SR-30-1 | 420472-03 | 1 | | | | | | | | | | | | | | | |
| 6 | Manual Label-Tap Switch | - | 439423-01 | 1 | | | | | | | | | | | | | | | |

F. Label Location
KM-1301SAH/3
 T-0 to U-1



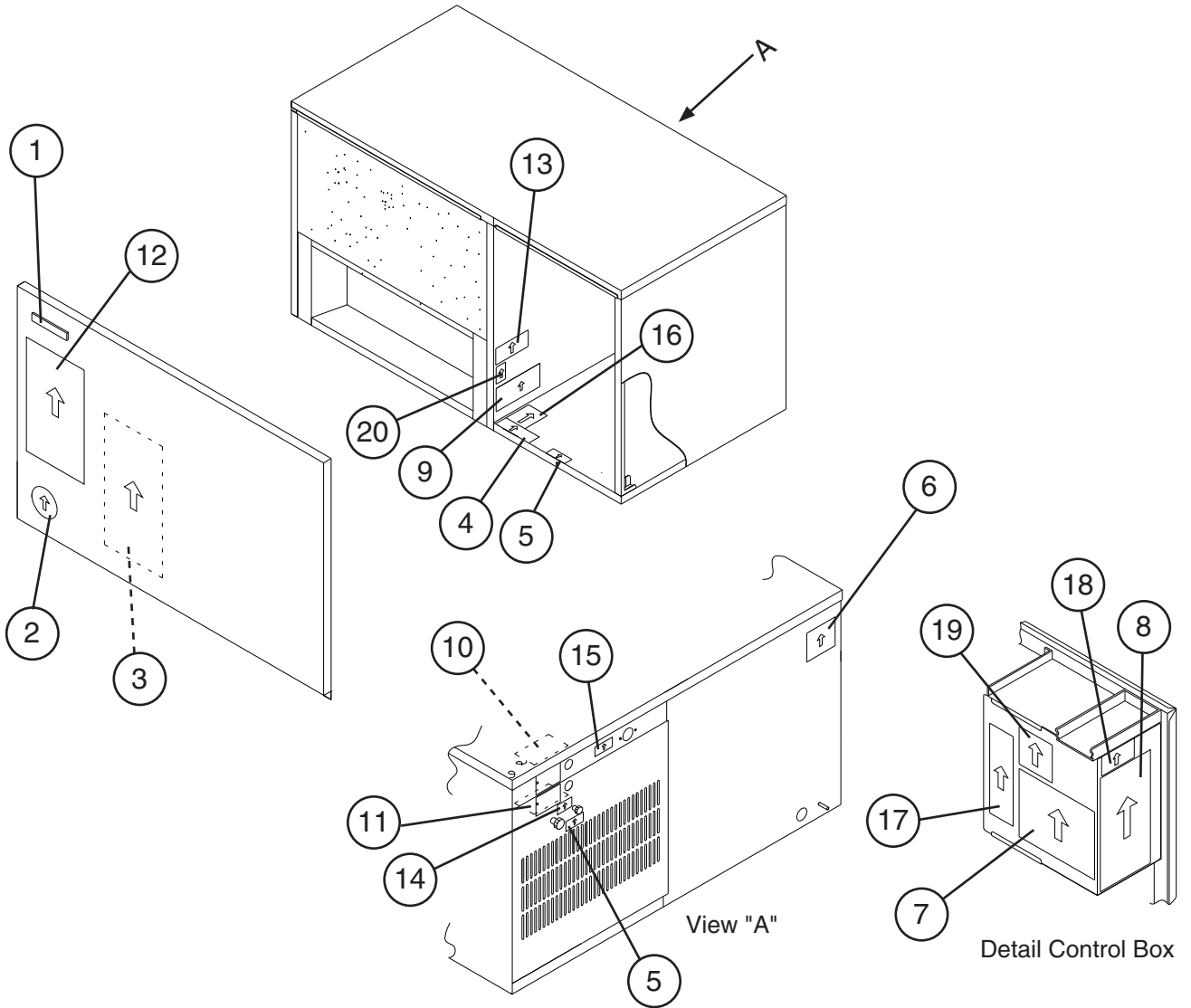
| Title: F. Label Location Model: KM-1301SAH/3 | | | | | | | | | | | | |
|--|-----------------------------------|--------------------------|-------------|-----------------|-----|-----|--|--|--|--|--|--|
| Index No. | Description | Material or Model Number | Part Number | Required Number | | | | | | | | |
| | | | | T-0 | U-0 | U-1 | | | | | | |
| 1 | Emblem | - | 4A0560-01 | 1 | 1 | | | | | | | |
| 2 | Label-Penguin (R) | - | 4A0526-01 | 1 | 1 | | | | | | | |
| 3 | Label-Air Filter | - | 426177-01 | 1 | 1 | | | | | | | |
| 4 | Maintenance Label | - | 3A3922-01 | 1 | 1 | | | | | | | |
| 5 | Caution Label (K) | - | 439150-01 | 1 | 1 | | | | | | | |
| 6 | Label-R404A | - | 4A0960-01 | 1 | 1 | | | | | | | |
| 7 | Nameplate | KM-1301SAH | 1A1590-01 | 1 | 1 | | | | | | | |
| | | KM-1301SAH3 | 1A1590-04 | 1 | 1 | | | | | | | |
| 8 | Wiring Label | KM-1301SAH | 3A4992-01 | 1 | - | | | | | | | |
| | | | 3A5536-01 | | 1 | | | | | | | |
| | | KM-1301SAH3 | 3A4995-01 | 1 | - | | | | | | | |
| | | | 3A5539-01 | | 1 | | | | | | | |
| 9 | Manual Label | - | 324476-01 | 1 | 1 | | | | | | | |
| 10 | Manual Label-Bin Control | - | 3A4841-01 | 1 | 1 | | | | | | | |
| 11 | Tag Warning:Electrical Connection | KM-1301SAH | 428430-01 | 1 | 1 | | | | | | | |
| | | KM-1301SAH3 | 438479-01 | 1 | 1 | | | | | | | |
| 12 | Instruction Sheet | - | 2A3911-01 | 1 | 1 | | | | | | | |
| 13 | Operation Label-Valve | - | 439541-01 | 1 | 1 | | | | | | | |
| 14 | Instruction Label | - | 444575-01 | 1 | 1 | | | | | | | |
| 15 | Rating Label | KM-1301SAH | 1A1591-01 | | | | | | | | | |
| | | KM-1301SAH3 | 1A1591-04 | 1 | 1 | | | | | | | |
| 16 | Caution Label (F) | - | 439146-01 | 1 | 1 | | | | | | | |
| 17 | Label-Control Board | - | 3A4799-01 | 1 | 1 | | | | | | | |
| 18 | Label-Fuse | - | 4A2817-01 | 1 | 1 | | | | | | | |
| 19 | Label-Alarm | - | 4A3517-01 | 1 | 1 | | | | | | | |
| 20 | Process Valve Label (A) | - | 4A3943-01 | 1 | 1 | | | | | | | |

F. Label Location
KM-1301SWH/3
T-0 to U-1



| Title: F. Label Location Model: KM-1301SWH/3 | | | | | | | | | | | | |
|--|-----------------------------------|--------------------------|-------------|-----------------|-----|-----|--|--|--|--|--|--|
| Index No. | Description | Material or Model Number | Part Number | Required Number | | | | | | | | |
| | | | | T-0 | U-0 | U-1 | | | | | | |
| 1 | Emblem | - | 4A0560-01 | 1 | 1 | | | | | | | |
| 2 | Label-Penguin (R) | - | 4A0526-01 | 1 | 1 | | | | | | | |
| 3 | Maintenance Label | - | 3A3922-01 | 1 | 1 | | | | | | | |
| 4 | Caution Label (K) | - | 439150-01 | 1 | 1 | | | | | | | |
| 5 | Label - R404A | - | 4A0960-01 | 1 | 1 | | | | | | | |
| 6 | Wiring Label | KM-1301SWH | 3A4993-01 | 1 | - | | | | | | | |
| | | | 3A5537-01 | | 1 | | | | | | | |
| | | KM-1301SWH3 | 3A4995-01 | 1 | - | | | | | | | |
| | | | 3A5539-01 | | 1 | | | | | | | |
| 7 | Manual Label | - | 324476-01 | 1 | 1 | | | | | | | |
| 8 | Manual Label-Bin Control | - | 3A4841-01 | 1 | 1 | | | | | | | |
| 9 | Tag Warning:Electrical Connection | KM-1301SWH | 428430-01 | 1 | 1 | | | | | | | |
| | | KM-1301SWH3 | 438479-01 | 1 | 1 | | | | | | | |
| 10 | Instruction Sheet | - | 2A3911-01 | 1 | 1 | | | | | | | |
| 11 | Instruction Label | - | 444575-01 | 1 | 1 | | | | | | | |
| 12 | Operation Label-Valve | - | 439541-01 | 1 | 1 | | | | | | | |
| 13 | Label-Control Board | - | 3A4799-01 | 1 | 1 | | | | | | | |
| 14 | Rating Label | KM-1301SWH | 1A1591-02 | 1 | 1 | | | | | | | |
| | | KM-1301SWH3 | 1A1591-05 | 1 | 1 | | | | | | | |
| 15 | Nameplate | KM-1301SWH | 1A1590-02 | 1 | 1 | | | | | | | |
| | | KM-1301SWH3 | 1A1590-05 | 1 | 1 | | | | | | | |
| 16 | Label-Fuse | - | 4A2817-01 | 1 | 1 | | | | | | | |
| 17 | Label-Alarm | - | 4A3517-01 | 1 | 1 | | | | | | | |
| 18 | Process Valve Label (A) | - | 4A3943-01 | 1 | 1 | | | | | | | |

F. Label Location
KM-1301SRH/3
T-0 to U-1

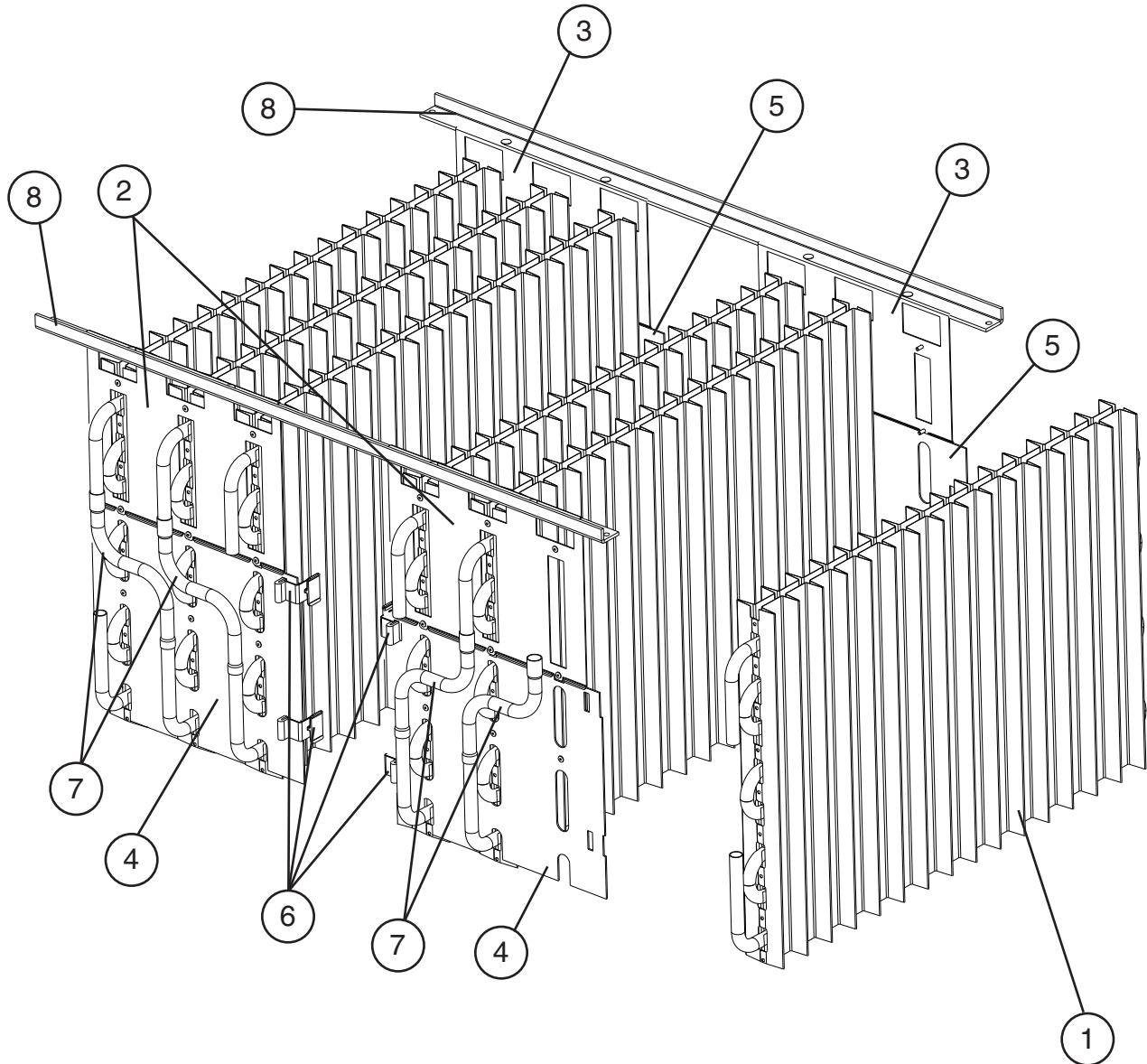


| Title: F. Label Location Model: KM-1301SRH/3 | | | | | | | | | | | | |
|--|------------------------------------|--------------------------|-------------|-----------------|-----|-----|--|--|--|--|--|--|
| Index No. | Description | Material or Model Number | Part Number | Required Number | | | | | | | | |
| | | | | T-0 | U-0 | U-1 | | | | | | |
| 1 | Emblem | - | 4A0560-01 | 1 | 1 | | | | | | | |
| 2 | Label-Penguin (R) | - | 4A0526-01 | 1 | 1 | | | | | | | |
| 3 | Maintenance Label | - | 3A3922-01 | 1 | 1 | | | | | | | |
| 4 | Caution Label (K) | - | 439150-01 | 1 | 1 | | | | | | | |
| 5 | Label-R404A | - | 4A0960-01 | 2 | 2 | | | | | | | |
| 6 | Nameplate | KM-1301SRH | 1A1590-03 | 1 | 1 | | | | | | | |
| | | KM-1301SRH3 | 1A1590-06 | 1 | 1 | | | | | | | |
| 7 | Wiring Label | KM-1301SRH | 3A4994-01 | 1 | - | | | | | | | |
| | | | 3A5538-01 | | 1 | | | | | | | |
| | | KM-1301SRH3 | 3A4996-01 | 1 | - | | | | | | | |
| | | | 3A5540-01 | | 1 | | | | | | | |
| 8 | Manual Label | - | 324476-01 | 1 | 1 | | | | | | | |
| 9 | Manual Label-Bin Control | - | 3A4841-01 | 1 | 1 | | | | | | | |
| 10 | Tag Warning: Electrical Connection | KM-1301SRH | 428430-01 | 1 | 1 | | | | | | | |
| | | KM-1301SRH3 | 438479-01 | 1 | 1 | | | | | | | |
| 11 | Tag-Fan Motor Leads | - | 4A1494-01 | 1 | 1 | | | | | | | |
| 12 | Instruction Sheet | - | 2A3911-01 | 1 | 1 | | | | | | | |
| 13 | Operation Label-Valve | - | 439541-01 | 1 | 1 | | | | | | | |
| 14 | Caution-Remote Label | - | 4A1491-01 | 1 | 1 | | | | | | | |
| 15 | Instruction Label | - | 444575-01 | 1 | 1 | | | | | | | |
| 16 | Rating Label | KM-1301SRH | 1A1591-03 | 1 | 1 | | | | | | | |
| | | KM-1301SRH3 | 1A1591-06 | 1 | 1 | | | | | | | |
| 17 | Label-Control Board | - | 3A4799-01 | 1 | 1 | | | | | | | |
| 18 | Label-Fuse | - | 4A2817-01 | 1 | 1 | | | | | | | |
| 19 | Label-Alarm | - | 4A3517-01 | 1 | 1 | | | | | | | |
| 20 | Process Valve Label (A) | - | 4A3943-01 | 1 | 1 | | | | | | | |

G. Evaporator Assembly

KM-1301SAH/3, KM-1301SWH/3, KM-1301SRH/3

T-0 to U-1

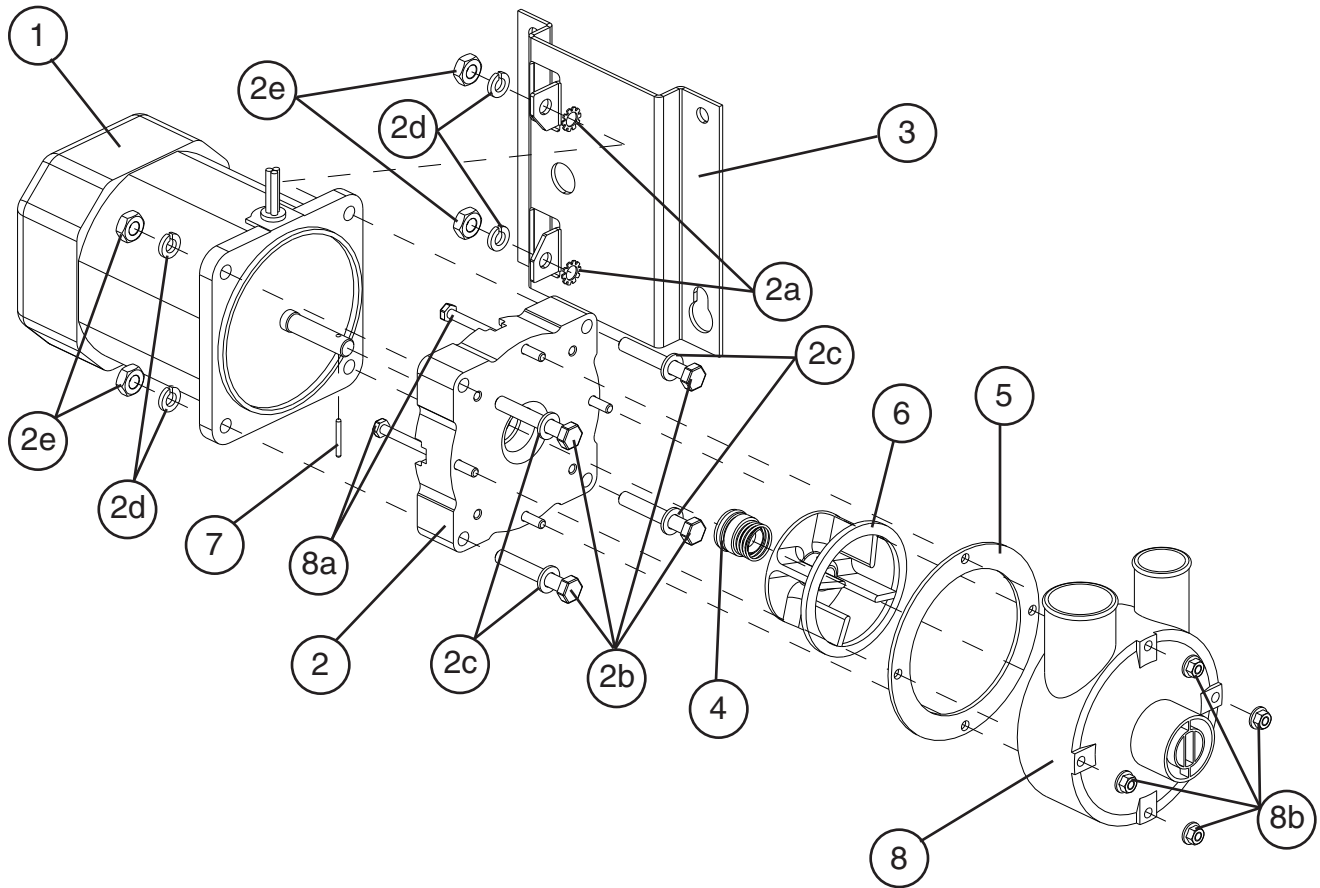


| Title: G. Evaporator Assembly Model: KM-1301SAH/3, KM-1301SWH/3, KM-1301SRH/3 | | | | | | | | | | | | | | | | | | | | |
|---|------------------------|--------------------------|-------------|-----------------|--|--|--|--|--|--|--|--|--|--|--|--|--|--|--|--|
| Index No. | Description | Material or Model Number | Part Number | Required Number | | | | | | | | | | | | | | | | |
| | | | | T-0 to U-1 | | | | | | | | | | | | | | | | |
| 1 | Evaporator | - | 103444G01 | 6 | | | | | | | | | | | | | | | | |
| 2 | Evaporator Bracket (A) | SS | 323690-01 | 2 | | | | | | | | | | | | | | | | |
| 3 | Evaporator Bracket (B) | SS | 323691-01 | 2 | | | | | | | | | | | | | | | | |
| 4 | End Plate (A) | ABS | 323692-01 | 2 | | | | | | | | | | | | | | | | |
| 5 | End Plate (B) | ABS | 323693-01 | 2 | | | | | | | | | | | | | | | | |
| 6 | Hook | - | 324152-01 | 8 | | | | | | | | | | | | | | | | |
| 7 | Copper Tube | - | 434137-01 | 4 | | | | | | | | | | | | | | | | |
| 8 | Evaporator Bracket | - | 436582-01 | 2 | | | | | | | | | | | | | | | | |

H. Pump Motor Assembly

KM-1301SAH/3, KM-1301SWH/3, KM-1301SRH/3

T-0 to U-1



| Title: H. Pump Motor Assembly Model: KM-1301SAH/3, KM-1301SWH/3, KM-1301SRH/3 | | | | | Required Number | | | | | | | | | |
|---|--------------------|--------------------------|-------------|------------|-----------------|--|--|--|--|--|--|--|--|--|
| Index No. | Description | Material or Model Number | Part Number | T-0 to U-1 | | | | | | | | | | |
| 1 | Pump Motor | M91A60SP201 | 2U0106-01 | 1 | | | | | | | | | | |
| 2 | Pump Flange | - | 215662-01 | 1 | | | | | | | | | | |
| 2a | Tooth Washer | M6, SS | 7R22-0600 | 2 | | | | | | | | | | |
| 2b | Hex Bolt | 6x40, SS | 7B02-0640 | 4 | | | | | | | | | | |
| 2c | Flat Washer | M6, SS | 7W22-0600 | 4 | | | | | | | | | | |
| 2d | Split Lock Washer | M6, SS | 7L22-0600 | 4 | | | | | | | | | | |
| 2e | Hex Nut | M6, SS | 7N12-0600 | 4 | | | | | | | | | | |
| 3 | Pump Motor Bracket | SS | 323904-01 | 1 | | | | | | | | | | |
| 4 | Mechanical Seal | - | 4A3820-01 | 1 | | | | | | | | | | |
| 5 | Packing | - | 428547-01 | 1 | | | | | | | | | | |
| 6 | Impeller | ABS White | 436584-01 | 1 | | | | | | | | | | |
| 7 | Pin | - | 4A0648-01 | 1 | | | | | | | | | | |
| 8 | Pump Housing | ABS White | 213687-01 | 1 | | | | | | | | | | |
| 8a | Hex Bolt | 4x55, SS | 7B02-0455 | 4 | | | | | | | | | | |
| 8b | Hex Flange Nut | 4, SS | 7J02-0400 | 4 | | | | | | | | | | |

J. Accessories & Packaging

KM-1301SAH/3, KM-1301SWH/3, KM-1301SRH/3

T-0 to U-1

| Title: J. Accessories & Packaging Model: KM-1301SAH/3, KM-1301SWH/3, KM-1301SRH/3 | | | | | | | | | | | | |
|---|--------------------|--------------------------|-------------|------------|-----------------|--|--|--|--|--|--|--|
| Index No. | Description | Material or Model Number | Part Number | T-0 to U-1 | Required Number | | | | | | | |
| | | | | | | | | | | | | |
| 1 | Instruction Manual | - | 91A7DA10A | 1 | | | | | | | | |
| 2 | Universal Brace | - | 4A0363-01 | 2 | | | | | | | | |
| 2a | Hex Bolt | 5x12, SS | 7B02-0512 | 4 | | | | | | | | |
| | Packaging | - | 2A0876A11 | | | | | | | | | |