

- Full stainless exterior!
- Non-corroding poly liner!
- All-poly cart for added durability!



Model ITS1350SG-60 (with optional Totes ice carriers in cart)

Ice flows into the castered cart when hopper door is opened, allowing fast, convenient ice removal.



**Optional Totes ice carriers**  
allow easy, safe ice distribution!  
Cart holds 150 lbs (68kg) of ice  
when Totes ice carriers are used.

Elevated ice storage bins and castered cart systems. Cart slides into bay below bin for convenient, gravity-fed loading. Widths from 31" (788mm) to 90" (2286mm) and storage capacities from 700 lbs (318kg) to 3250 lbs (1474 kg) of ice, excluding carts. Each cart stores an additional 240 lbs (109kg) of ice, 150 lbs (68kg) when used with optional Totes™ ice carriers. Full stainless bin and base exterior standard.

### Labor-saving design increases convenience and safety

- Gravity loading ice saves time, eliminates shoveling
- Castered cart rolls easily, quickly to area of use
- Optional Totes ice carriers allow safe, easy ice distribution in displays, salad bars, ice dispensers

### All-polyethylene cart provides a better way to move ice within your facility

- Durable, easy-to-clean poly eliminates dents, scratches
- All-poly material reduces damage to walls and fixtures from careless cart drivers
- Oversized wheels make maneuvering easy
- Wide, shallow cart design facilitates removal of ice
- Cart drains to bin drain system when parked in bay

### Non-corroding poly liners and hoppers

- Eliminates pitting and staining of liner
- Provides exceptional durability

### Totes ice carriers simplify ice distribution

- Six rugged polyethylene Totes ice carriers nest in cart
- Eliminates need to shovel ice from cart
- Easy, safe way to distribute ice in displays
- Slim design fits easily below breath protectors

### Other quality construction features

- Full stainless bin and base standard
- Heavy-duty base with built-in drain for bin and cart
- Single, reversible drain connection
- Durable polyethylene lift door with PowerHinge™ door hinge on ITS700-31, inspection window on ITS500-31
- Stainless tops custom-cut for specific icemaker(s)

### Accessories

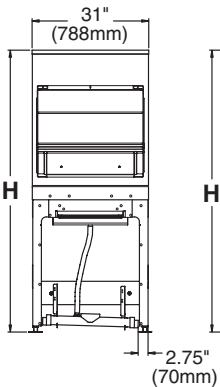
- Totes ice carriers (set of 6, one set per cart) (item# ABICETOTP)
- Additional ice transport cart(s)
- Drain pan (required for some Vogt and Howe icemakers; consult factory)
- Center partition for 2-bay systems; off-set partition for 3-bay systems
- Plastic shovel (item# ABICSHOVEL)
- Ice paddle and hanging bracket (item# ABICEPADDL)

JOB: \_\_\_\_\_

ITEM: \_\_\_\_\_

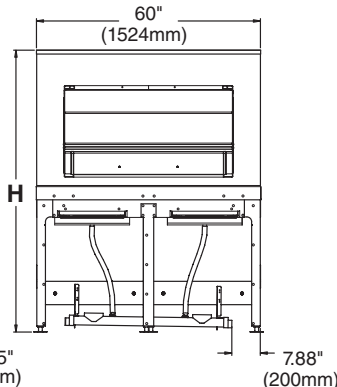
## Front View ITS700SG-31

(without cart in bay)  
ITS500NS has  
sliding window only



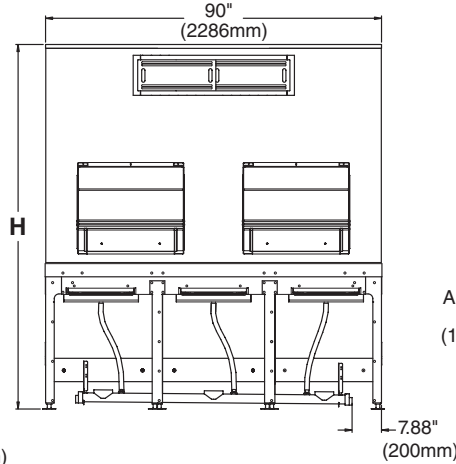
## Front View ITS1350SG-60

(without carts in bays)  
ITS2250SG has sliding  
window at top of bin



## Front View – ITS3250SG-90

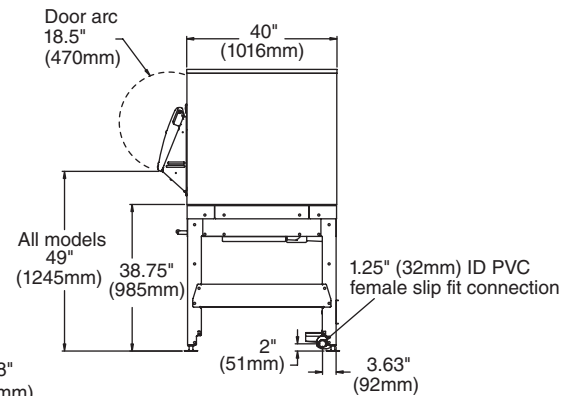
(without carts in bays)  
ITS1700SG has no sliding window



U.S. Patents 5,211,030  
& 5,797,514

## All Models

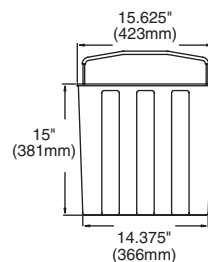
(shown without cart in bay)



## General Notes

- Clearance required to pull cart from bay – minimum 48" (1220mm), optimal 54" (1372mm)
- Follett recommends installation of a floor drain with grate with all ice storage bins
- Drain connection is reversible to exit at left or right side of unit

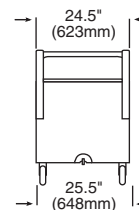
## Front View Totes Ice Carrier



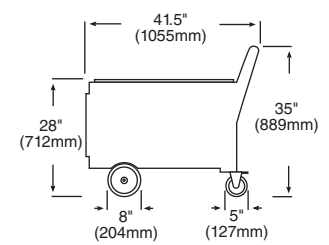
## Side View Totes Ice Carrier



## Front View Cart



## Side View Cart



Model Number	Cubic Volume cu ft (m)	Max. Bin Cap. lb (kg) <sup>1</sup>	Max. Cap. with Carts lb (kg) <sup>1,2</sup>	No. Carts	Width in (mm)	Depth in (mm) <sup>3,5</sup>	Depth with Door in (mm) <sup>3,5</sup>	Height (H) with Legs in (mm) <sup>6</sup>	Required Access in (mm) <sup>4</sup>	Approximate Ship Wt. lb (kg) <sup>5</sup>
ITS500NS-31	12.7 (0.36)	382 ( 174)	622 ( 283)	1	31 ( 788)	40 (1016)	40 (1016)	60 (1524)	32 ( 813)	446 (203)
ITS700SG-31	21.7 (0.61)	652 ( 296)	892 ( 405)	1	31 ( 788)	40 (1016)	48 (1220)	75 (1905)	32 ( 813)	467 (212)
ITS1350SG-60	44.2 (1.25)	1327 ( 602)	1567 ( 711)	2	60 (1524)	40 (1016)	48 (1220)	75 (1905)	41 (1042)	849 (386)
ITS2250SG-60	71.1 (2.01)	2133 ( 968)	2373 (1077)	2	60 (1524)	40 (1016)	48 (1220)	97 (2464)	41 (1042)	972 (441)
ITS1700SG-90	58.2 (1.65)	1716 ( 779)	1986 ( 901)	3	90 (2286)	40 (1016)	48 (1220)	70 (1778)	41 (1042)	1203 (645)
ITS3250SG-90	108.5 (3.07)	3255 (1477)	3495 (1586)	3	90 (2286)	40 (1016)	48 (1220)	97 (2464)	41 (1042)	1370 (622)

## Notes:

- 1 Computed on cubic volume of bin. Does not reflect cart capacity or voids that can occur due to pyramiding.
- 2 Each cart holds 240 lbs (109kg) without optional Totes ice carriers, 150 lbs (68kg) with Totes ice carriers.
- 3 Door assemblies remove easily (4 screws) if necessary for installation access.
- 4 Required clearance for installation access through doors (may require removal of door assembly).
- 5 Add 2" (51mm) to depth and 10 lbs (4.5kg) to shipping weight when drain pan accessory used.
- 6 Special top required for icemakers weighing more than 1000 lbs (454kg). Add 2.125" (54mm) to height. Contact factory.

## Specifications

Follett ice transport system to be model \_\_\_\_\_ equipped with Follett ice transport cart(s). Elevated bin to hold approximately \_\_\_\_\_ lbs (kg) of ice. Exterior of bin and base to be full stainless steel. All bins (except ITS500NS) to have poly snout, poly lift door with PowerHinge door hinge, and SmartGATE ice shield. Stainless steel bin top to be custom cut for icemaker(s) to be used. Bin liner walls to be of non-corroding poly and insulated with non-CFC foam polyurethane. Bin hopper to be of polyethylene with extra large opening(s) to facilitate ice flow. Base to have built-in drains for bins and carts, and insulated drain troughs, shutter door, and drain to minimize condensation. Cart(s) to be of insulated one-piece molded polyethylene, with plastic lid, four heavy-duty casters (two swivel with one step-on lock and two non-swivel). Carts and optional Totes ice carriers to store below bin when not in use and to drain when positioned in bay. All models to have adjustable flanged feet. All models to have a paddle and be NSF-listed.

PowerHinge and Totes are trademarks of Follett Corporation.

SmartGATE is a registered trademark of Follett Corporation, registered in the US.

Follett reserves the right to change specifications at any time without obligation. Certifications may vary depending on country of origin.